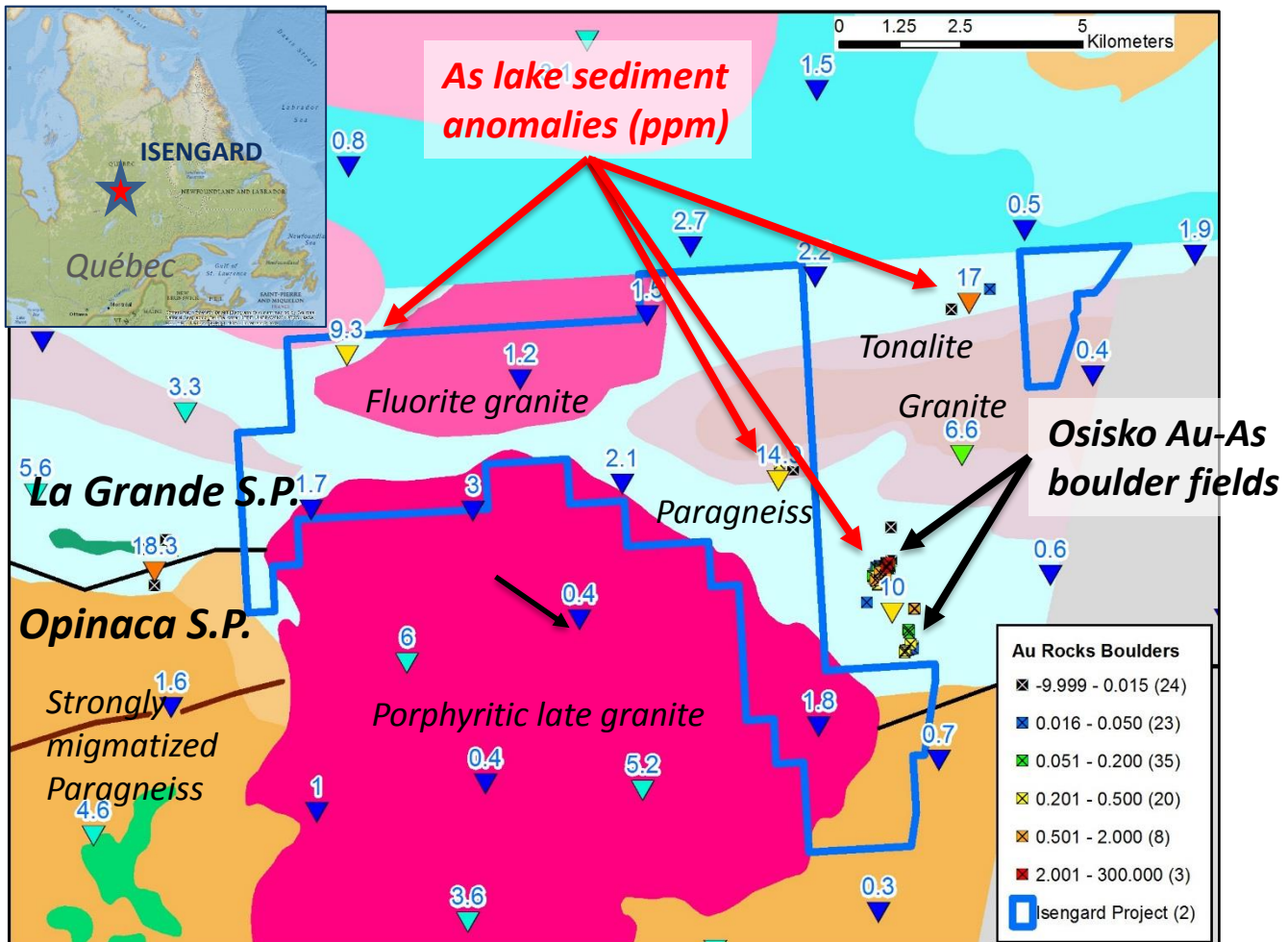


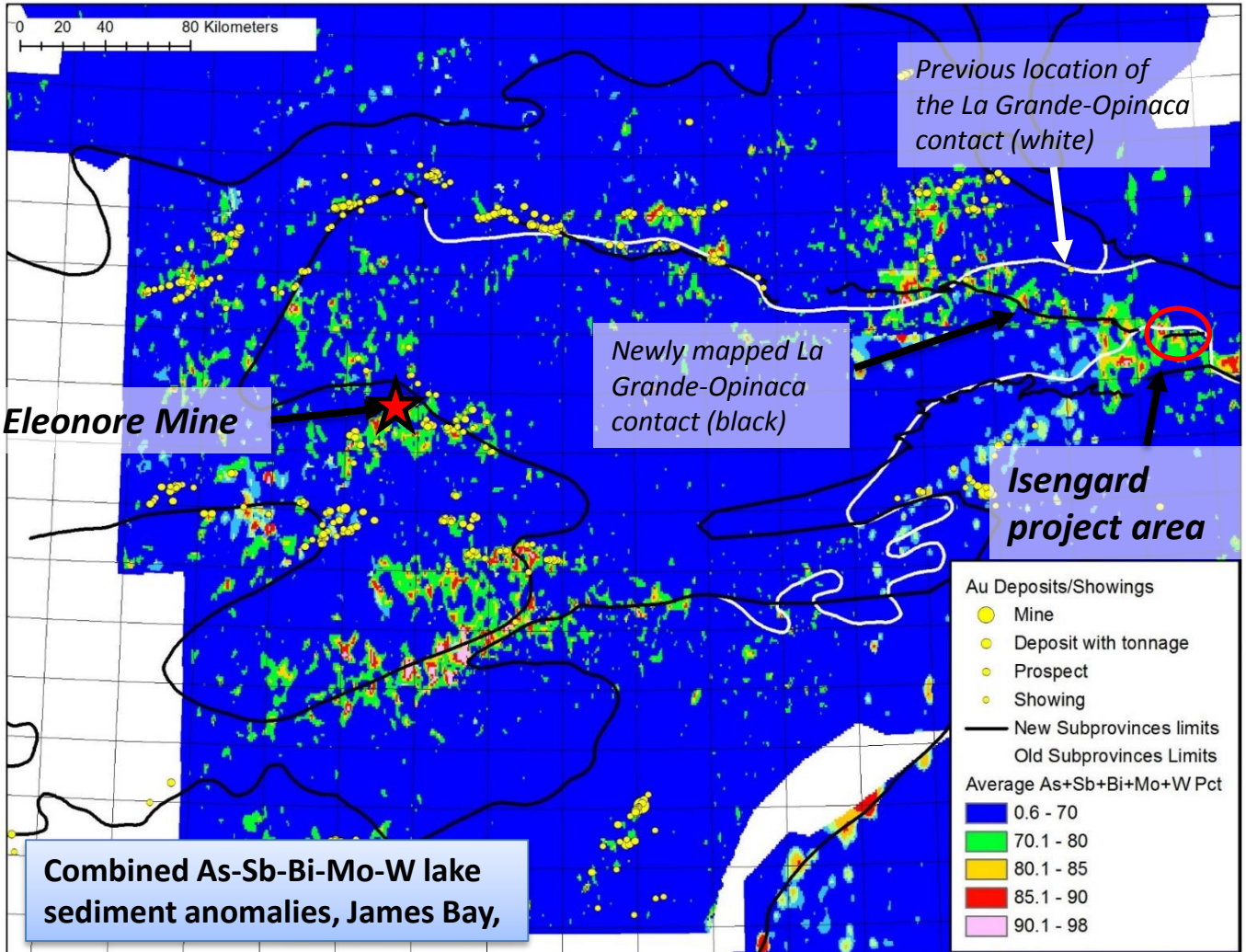
# ISENGARD GOLD PROJECT



- The Isengard project is located at the contact between the La Grande and Opinaca subprovinces, which hosts most of the significant gold deposits in James Bay.
- Following new mapping by the Quebec government in 2016, the La Grande – Opinaca contact was re-interpreted as being much further south than previously believed, in a previously unexplored area. The Isengard project covers 12 kilometers of the newly interpreted contact zone.
- In 2015, Osisko found several gold-arsenopyrite boulder fields in an adjacent claim block, also covering the La Grande - Opinaca contact; it contains at least 51 boulders that yielded more than 0.1 g/t Au, with up to 8.0 g/t Au. The outcrop sources have not been found yet. Host rocks are mainly amphibolites, but gold-bearing sandstones, wackes and tonalites were also found. The Isengard project is located in stratigraphically equivalent rocks.
- Strong and unexplained arsenic lake sediment anomalies on Isengard suggest that similar gold-arsenic mineralization is present on the claim block.
- Mapping in 2016 by the government identified metamorphosed orogenic alteration zones, and gold lithogeochemical anomalies in late granitoids.



# ISENGARD GOLD PROJECT



Sylvain Trépanier, P.Geo., is the qualified person, as defined by NI 43-101, who prepared the technical data presented here.

## FOR FURTHER INFORMATION

Lawrence Winter  
VP Exploration

Lwinter@altiusminerals.com  
1-709-579-8278

www.altiusminerals.com  
TSX:ALS  
www.midlandexploration.com  
TSX-V: MD

Sylvain Trépanier  
VP Explo. Northern Quebec

Sylvain.Trepanier@midland  
exploration.com  
1-819-712-1693