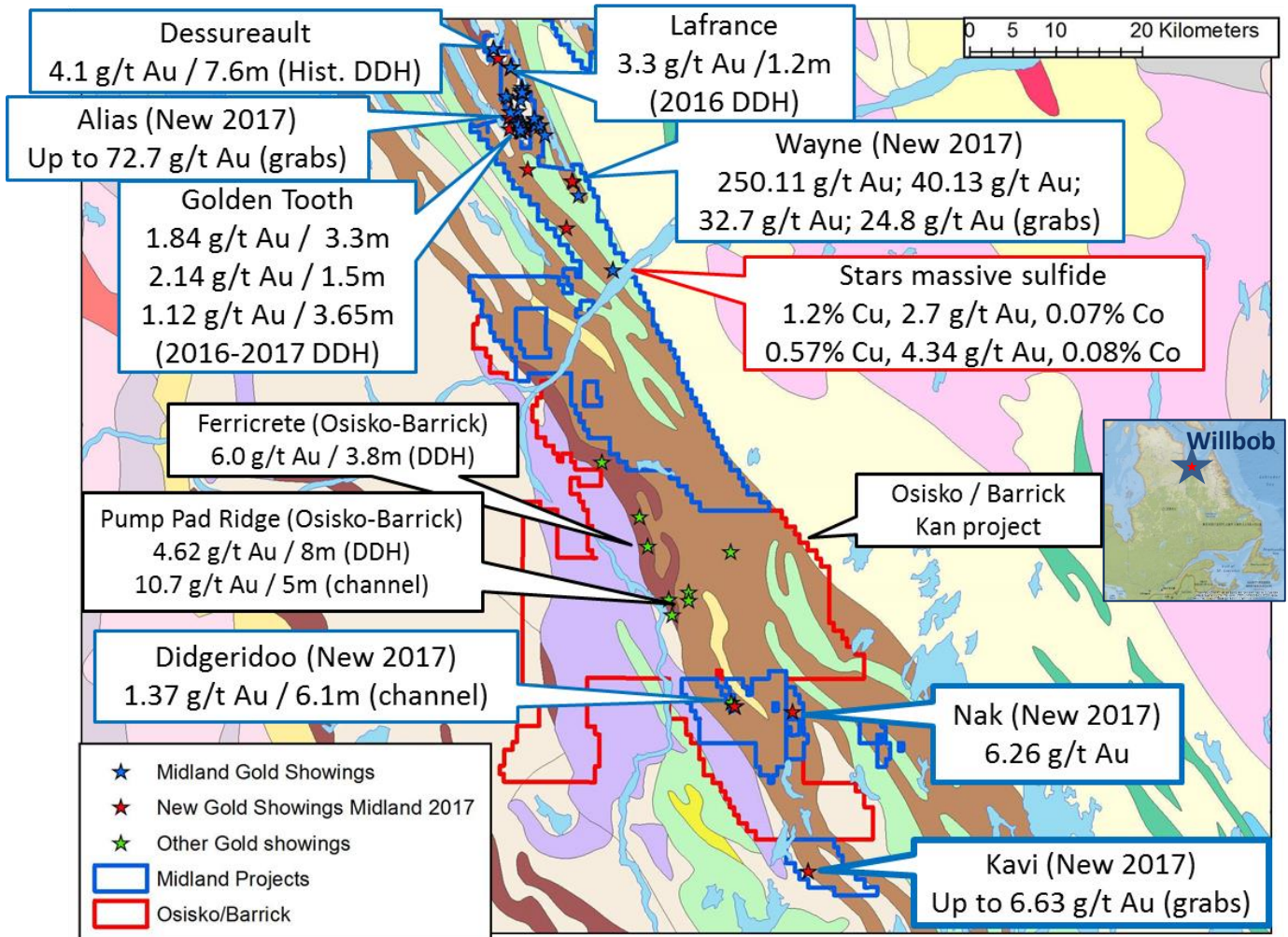


WILLBOB GOLD PROJECT



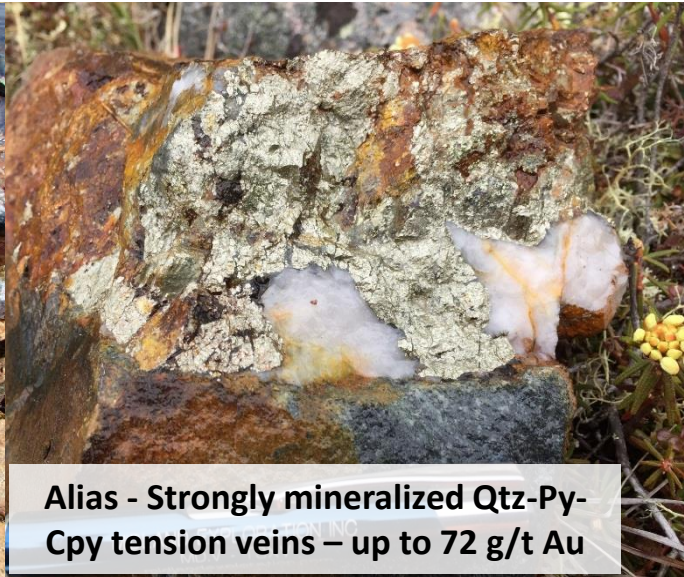
- Extensive land position in the Labrador Trough, Northern Quebec (1488 claims, 683 km²)
- Many new gold showings found since 2014, little previous exploration for gold
- Several Au-mineralization events now recognized – typical of major gold districts
- Very favorable regional setting for orogenic gold deposits:
 - Greenschist facies rocks
 - Favorable iron-rich rocks to precipitate gold: iron-rich gabbros, diorites, iron formations, black shales
 - Polyphase deformation, abundant thrusting and folding
 - Widespread quartz veining
 - Major crustal-scale structure on the project, separating older, lower metamorphic grade volcanosedimentary rocks, from younger, amphibolite-facies metasediments
 - Syn-orogenic polygenic conglomerates on the project – possibly marking reactivated normal faults within the orogeny
- Emerging gold prospect on the adjacent Kan project – Osisko/Barrick



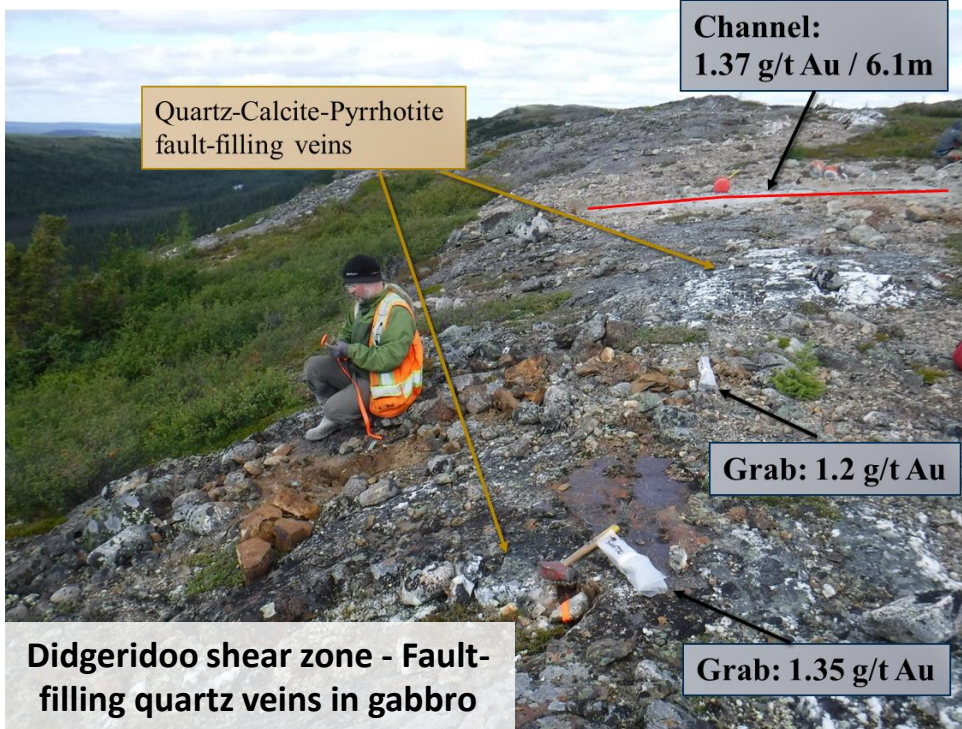
WILLBOB GOLD PROJECT



**Golden Tooth shear zone -
Fault-filling quartz veins in
quartz-diorite**



Alias - Strongly mineralized Qtz-Py-Cpy tension veins – up to 72 g/t Au



**Quartz-Calcite-Pyrrhotite
fault-filling veins**

**Channel:
1.37 g/t Au / 6.1m**

Grab: 1.2 g/t Au

**Didgeridoo shear zone - Fault-
filling quartz veins in gabbro**

Grab: 1.35 g/t Au

Sylvain Trépanier, P.Geo., is the qualified person, as defined by NI 43-101, who prepared the technical data presented here.

Gino Roger
President

Gino.Roger@midland
exploration.com

FOR FURTHER INFORMATION

www.midlandexploration.com
TSX-V: MD

Sylvain Trepanier
VP Expl. Northern Quebec

Sylvain.Trepanier@midland
exploration.com