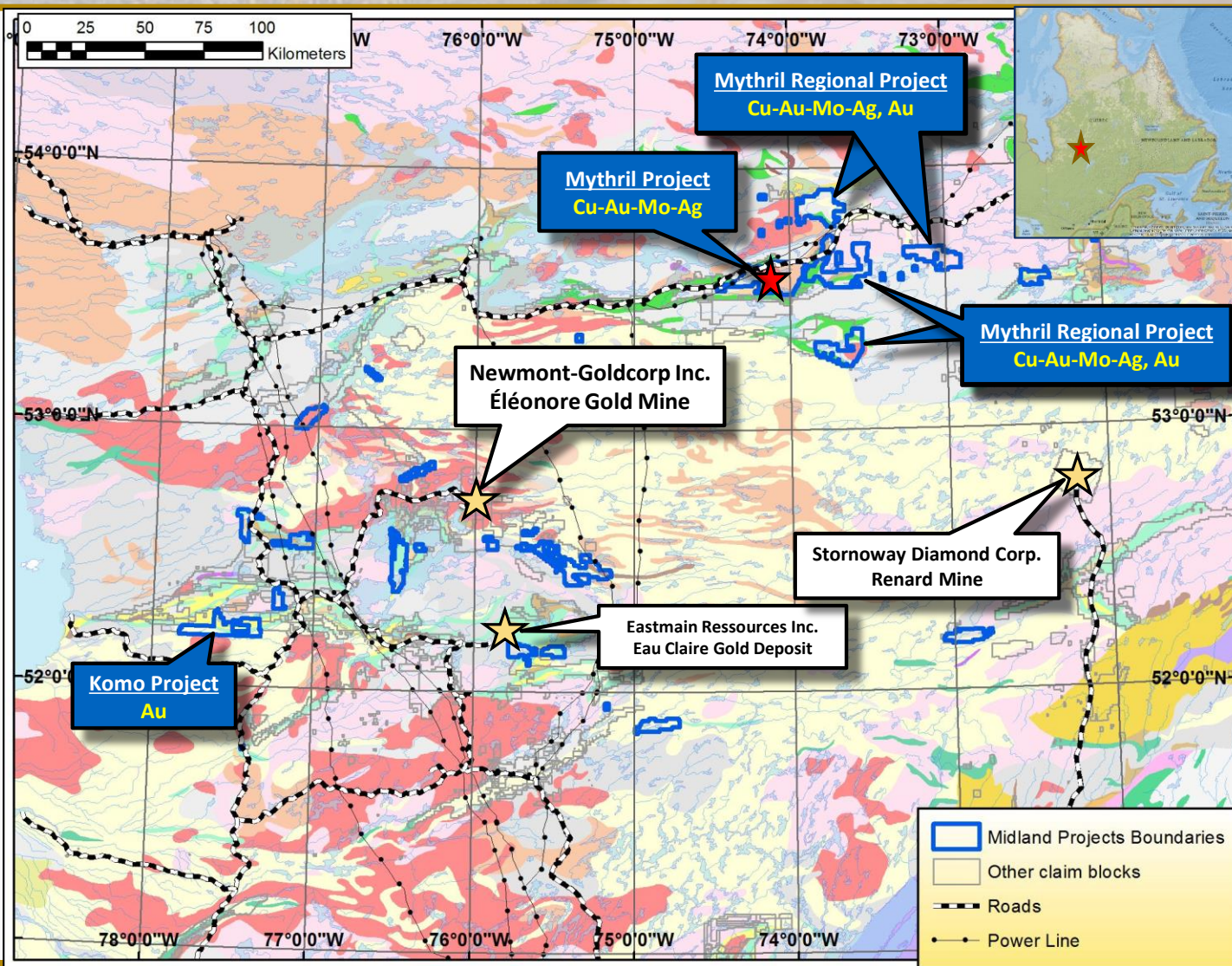
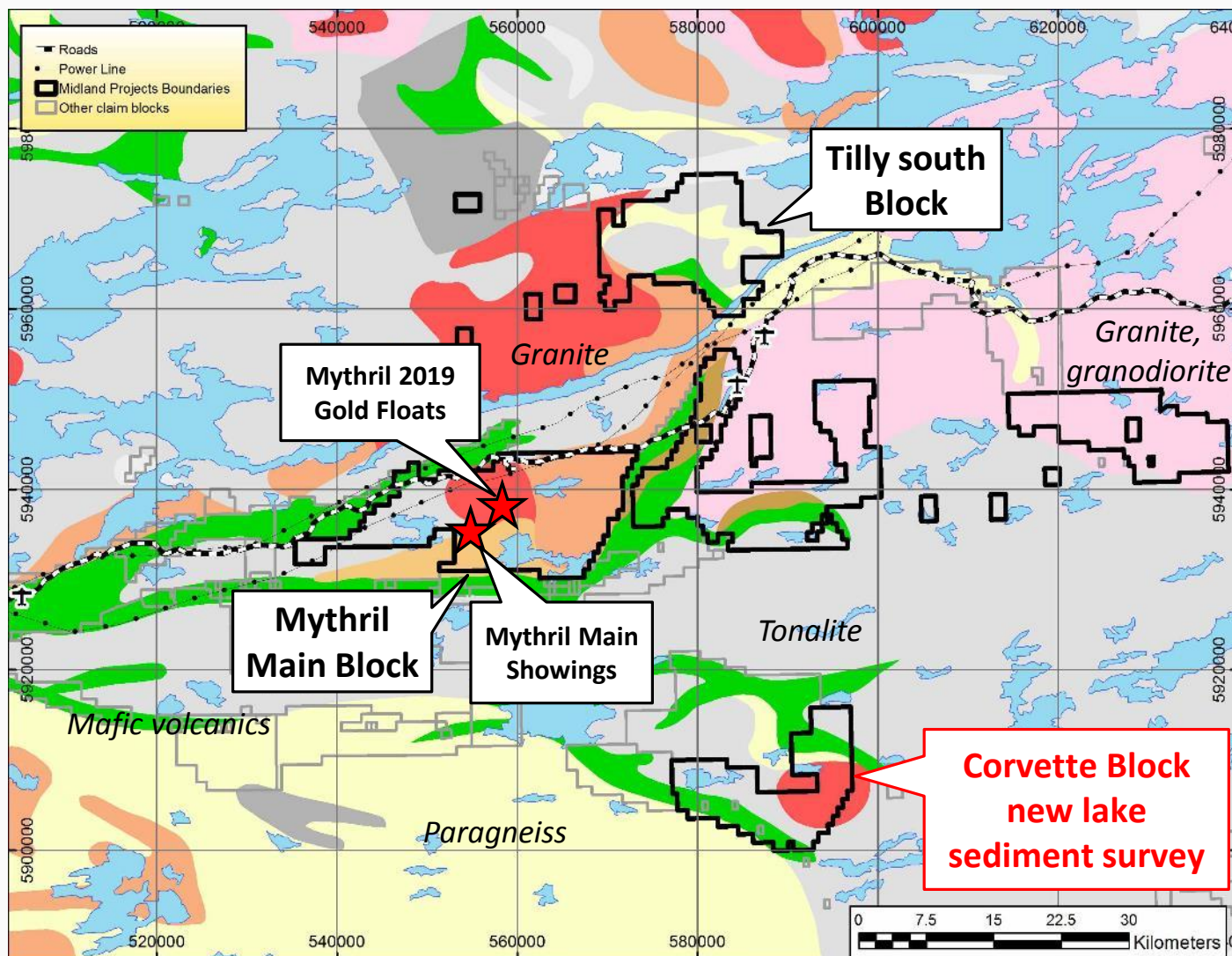


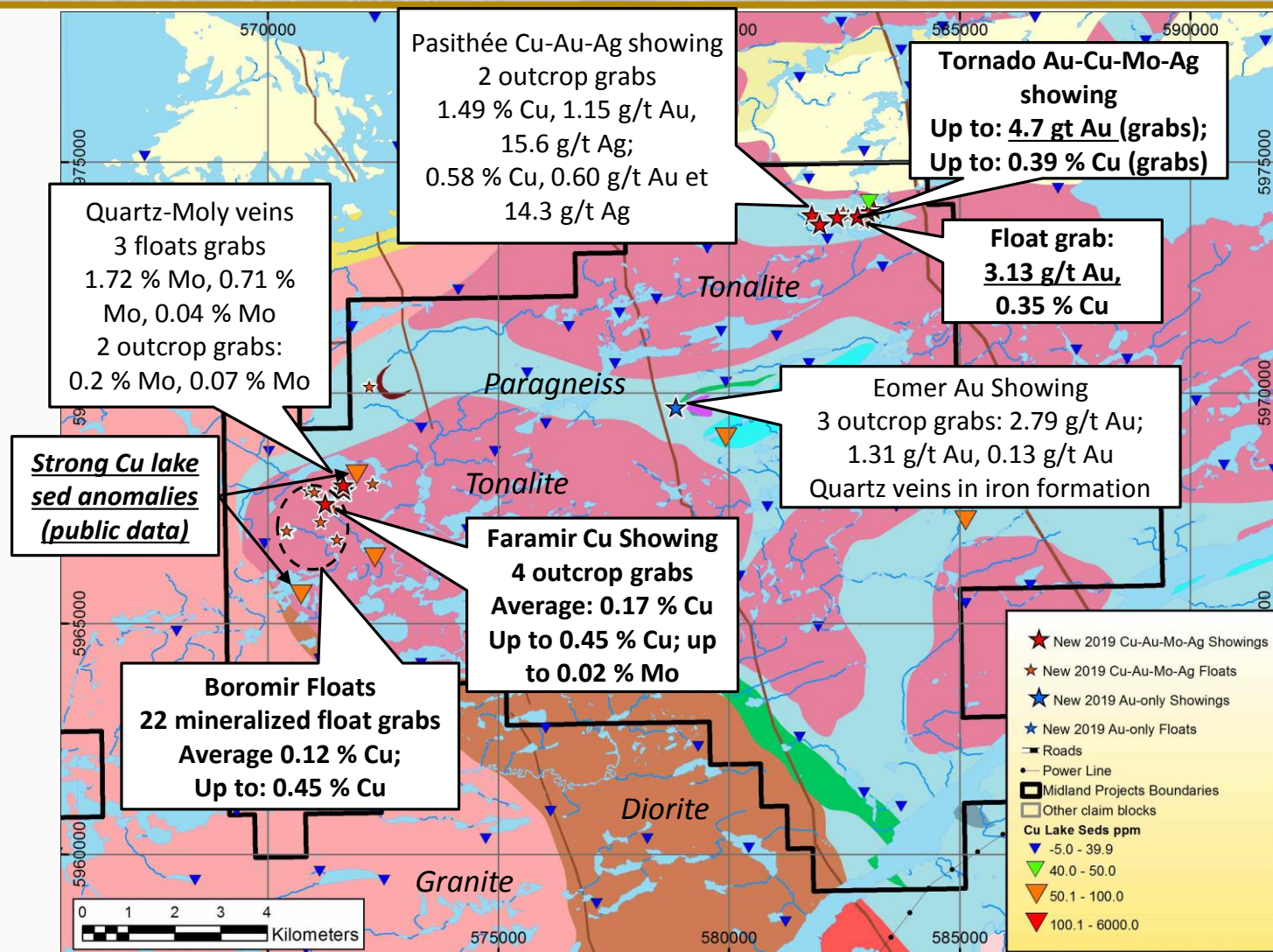
# Midland Mythril Discovery Location

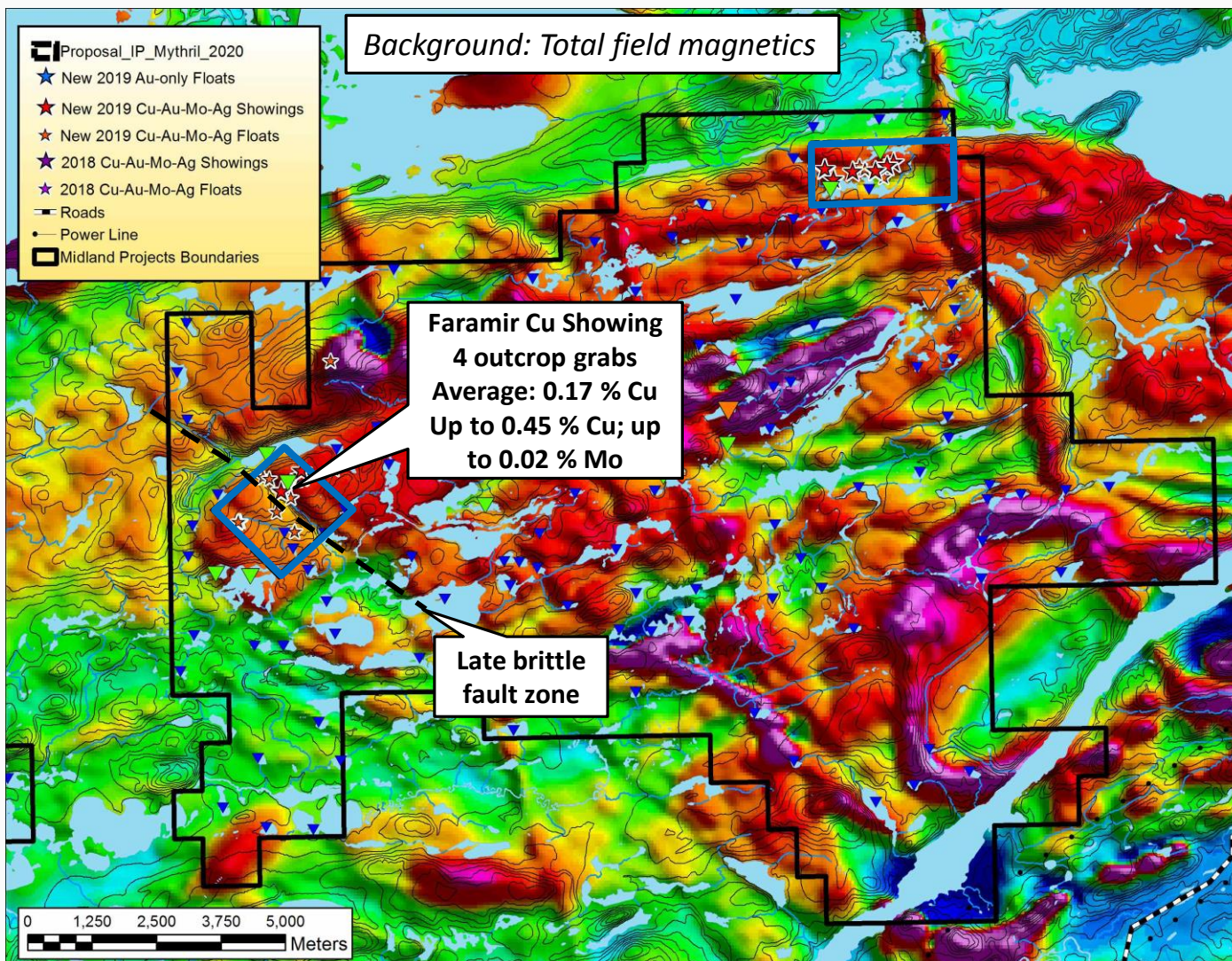


# Mythril + Mythril Regional Claim Blocks



# Tilly South – 2019 showings





# Faramir Cu showing

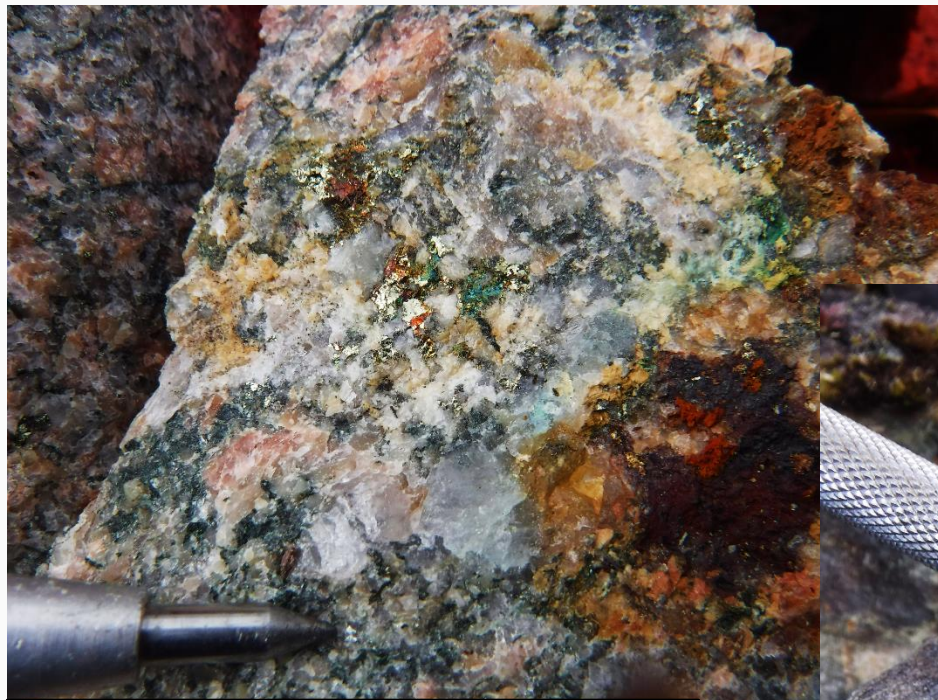


*S410738 (outcrop)  
Granite, altered in chlorite-epidote, injected with  
quartz and ankerite veins  
0.34 % Cu, 0.02 % Mo*



*S410736 (outcrop)  
Granite, strongly altered in epidote, K-feldspar  
and injected with quartz, chlorite vein  
stockwork, disseminated chalcopryrite and pyrite  
0.11 % Cu*

# Boromir Cu-bearing floats

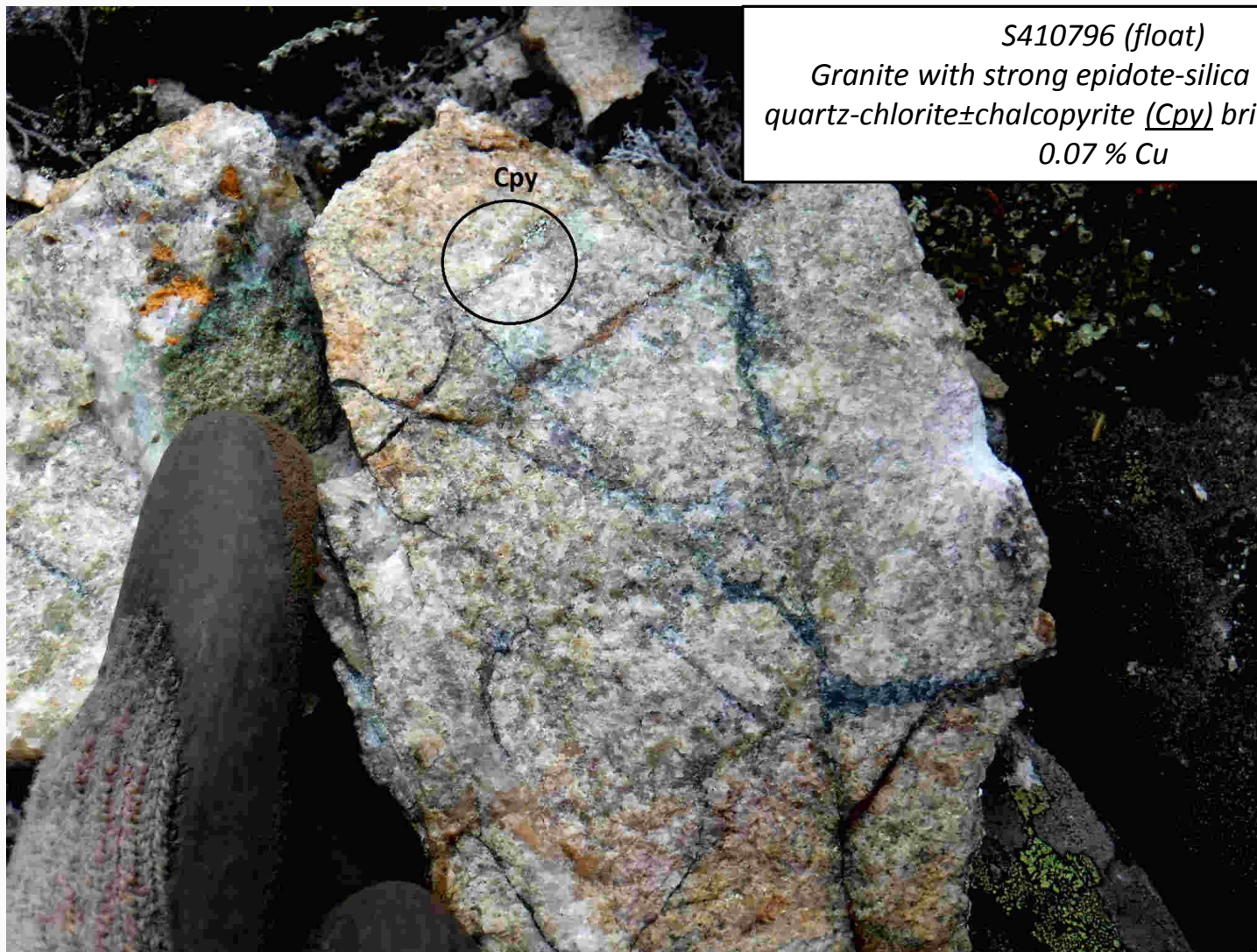


*S410629 (float)  
Strongly chloritized granite with intense  
quartz-chlorite stockwork, vein and  
disseminated chalcopyrite+malachite  
0.26 % Cu*

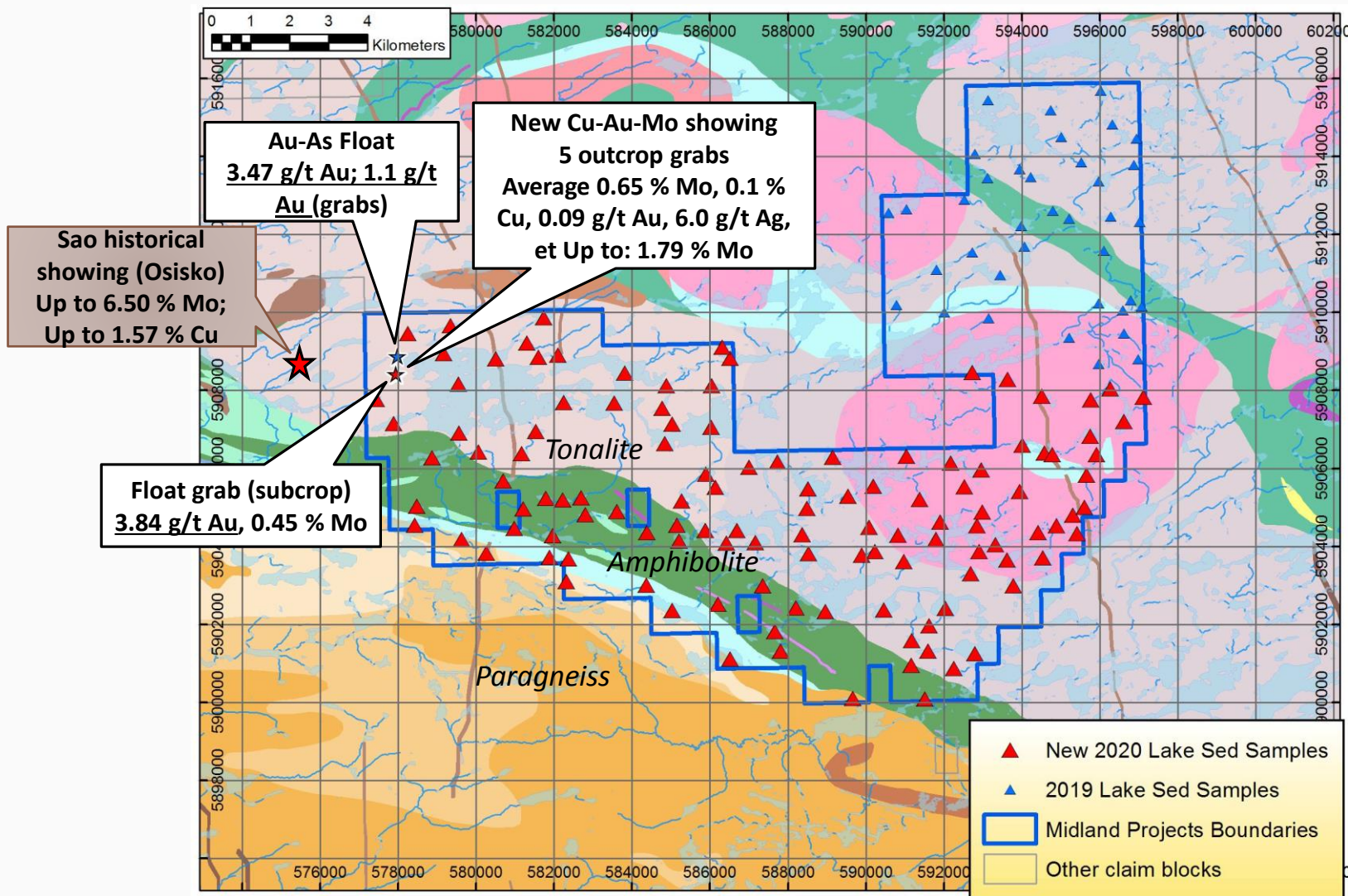


*S410630 (float)  
Granite with chlorite stockwork, vein and  
disseminated chalcopyrite+malachite  
0.16 % Cu*

# Boromir Cu-bearing floats



S410796 (float)  
Granite with strong epidote-silica alteration,  
quartz-chlorite±chalcopryite (Cpy) brittle stockwork  
0.07 % Cu

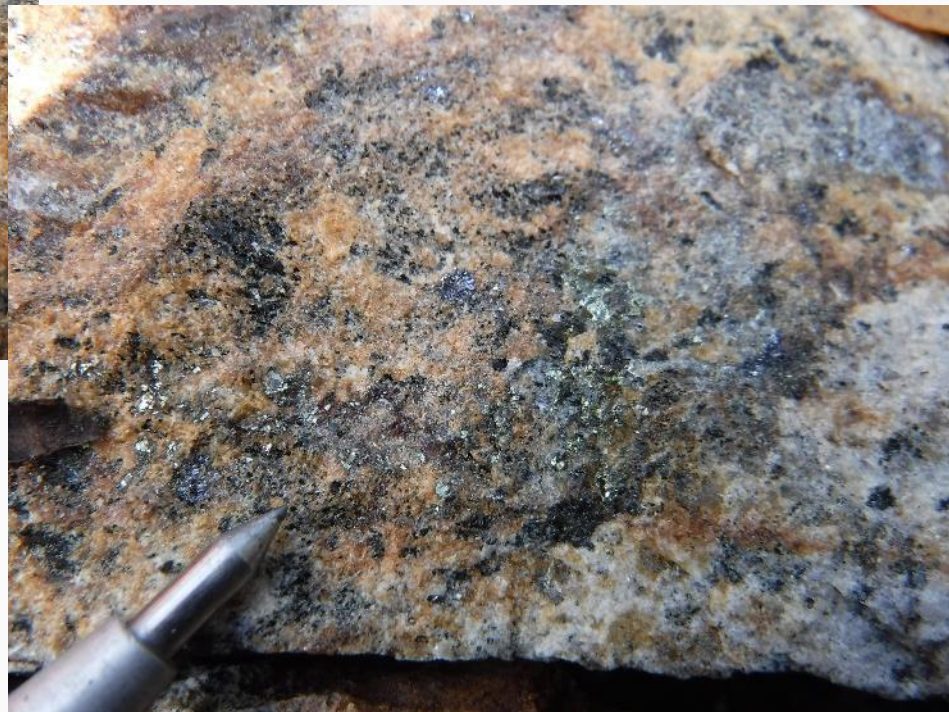


# Corvette – Mo-Cu-Au Mineralization



*S410852 (outcrop)*  
*Tonalite with quartz veins, fracture-controlled and disseminated chalcopyrite and molybdenite*  
**0.36 % Cu, 0.31 % Mo, 0.07 g/t Au, 18 g/t Ag**

*S410852 (float, local origin)*  
*Tonalite with quartz-feldspar veinlets, disseminated molybdenite and pyrite*  
**3.84 g/t Au, 0.45 % Mo**

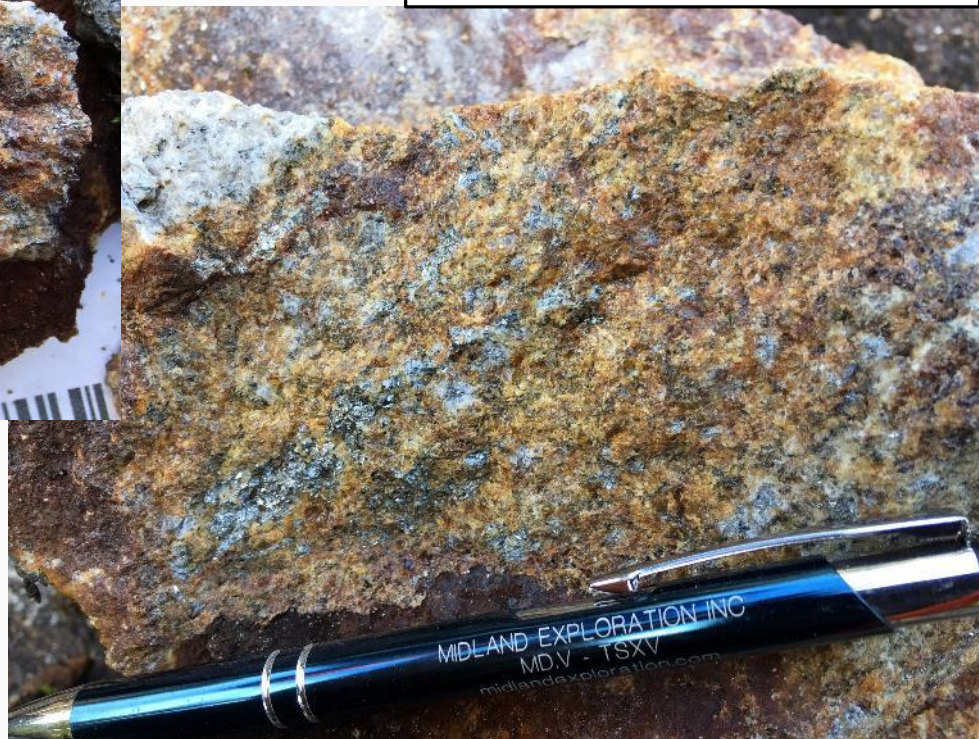


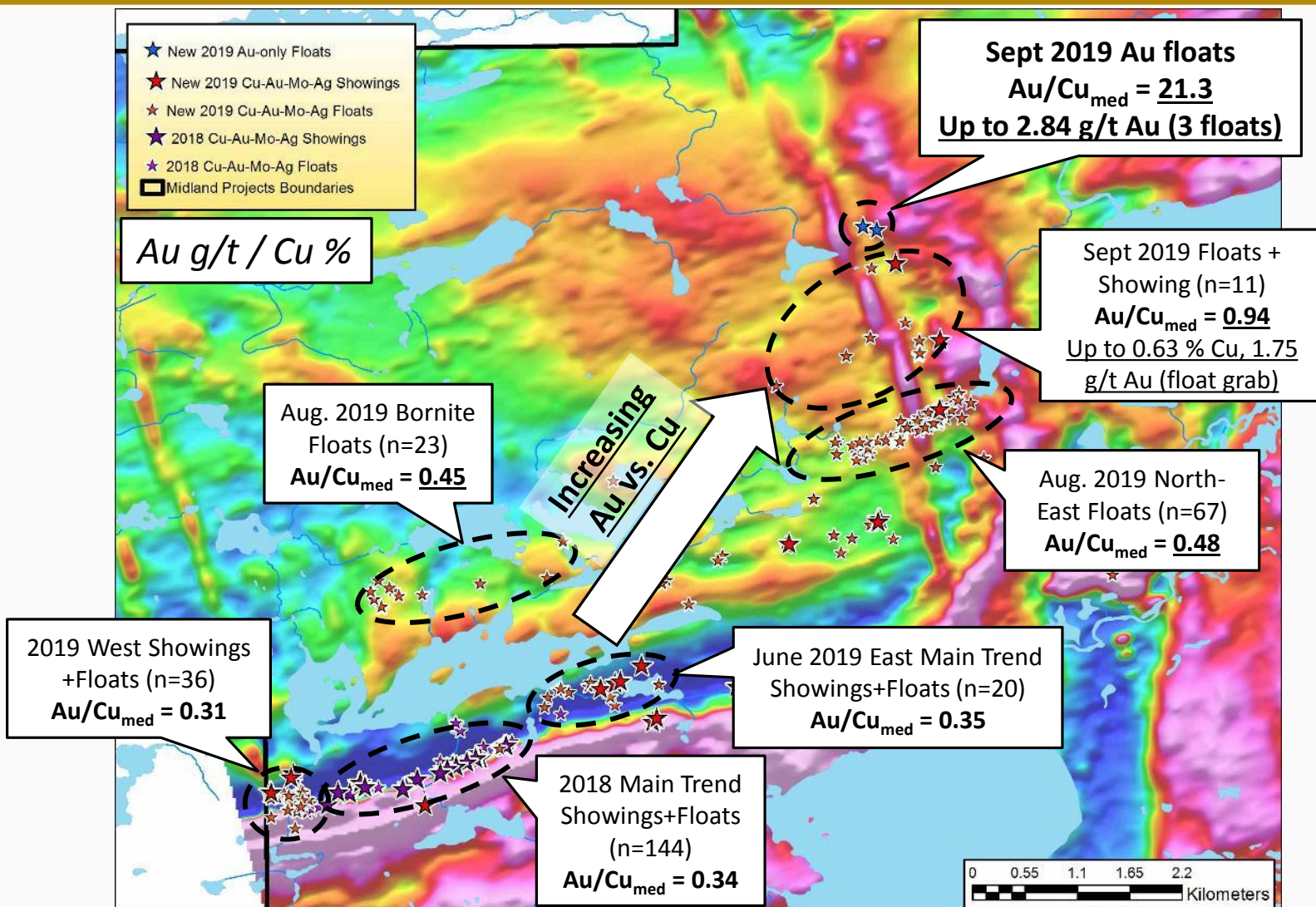
# Corvette – Au-As float



*S410904 (float)*  
*Tonalite with disseminated arsenopyrite and quartz-tourmaline veinlets (same float as S410905)*  
**1.1 g/t Au**

*S410905 (float)*  
*Sheared tonalite with disseminated arsenopyrite, quartz-tourmaline veinlets, quartz veinlets*  
**3.47 g/t Au**





# Mythril – Gold-bearing floats



*S410469 (float)  
Granodiorite with bands altered in  
biotite and mineralized in trace  
magnetite and chalcopyrite  
2.83 g/t Au, 0.13 % Cu, 15.2 g/t Ag*

*S410492 (float)  
Granodiorite with granite dykes, quartz  
veinlets, biotite alteration and 1% pyrite  
2.84 g/t Au, 0.06 % Cu, 2.0 g/t Ag*



