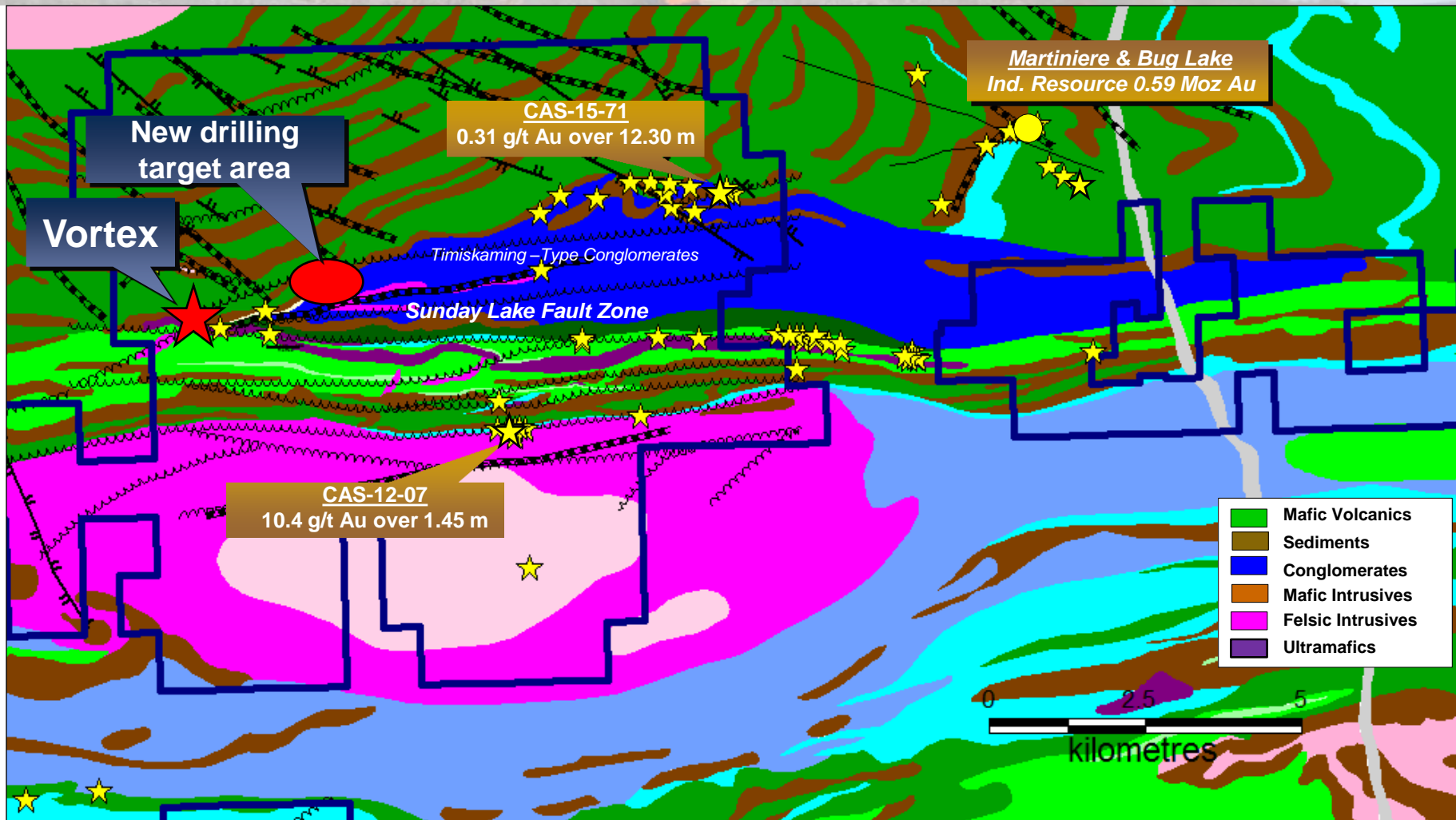
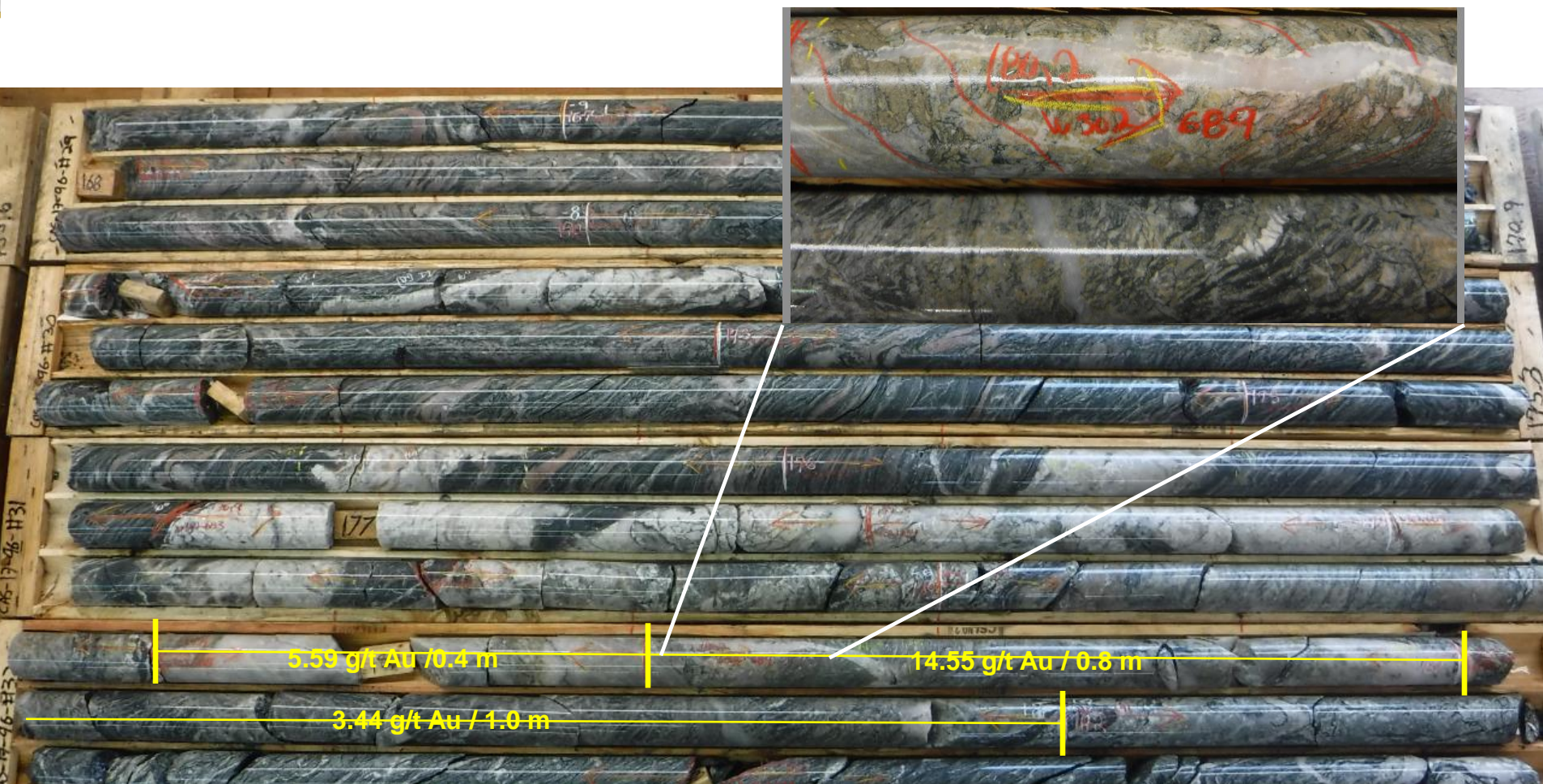


 **Midland Gold Projects (Sept. 2019)**

- ❖ **Two (2) regional major deformation zones (Sunday Lake & Lower Detour) hosting significant gold deposits - Detour Gold (Detour Lake & Zone 58N)**
  - ❖ **Detour Lake Mine** : Reserves P+P > 13 Moz Au (Open Pit mine)
  - ❖ **Zone 58N** : New high-grade gold discovery ( Resource of 0.7 Moz ; in progress )
- ❖ **Two (2) other advanced gold projects along the Sunday Lake DZ**
  - ❖ **Martiniere / Bug Lake** : “Multi-lense” gold resource 0.59 Moz Au - Balmoral
  - ❖ **Fenelon deposit**: High-grade Au deposit ; Bulk sample 35Kt - Wallbridge
- ❖ **B26 Gold VMS deposit – SOQUEM**
  - ❖ **Indicated Resource** : 6.97 Mt grading 1.32% Cu, 1.80% Zn, 0.60 g/t Au and 43.0 g/t Ag
  - ❖ **Inferred Resource**: 4.41 Mt grading 2.03% Cu, 0.22% Zn, 1.07 g/t Au and 9.0 g/t Ag
- ❖ **Midland holds > 40 km of favorable ground just south of the Lower Detour DZ with a great potential for other splays like the Zone 58N**
- ❖ **Midland holds > 30 km in the extensions of the B26 Cu-Au-Zn-Ag deposit**

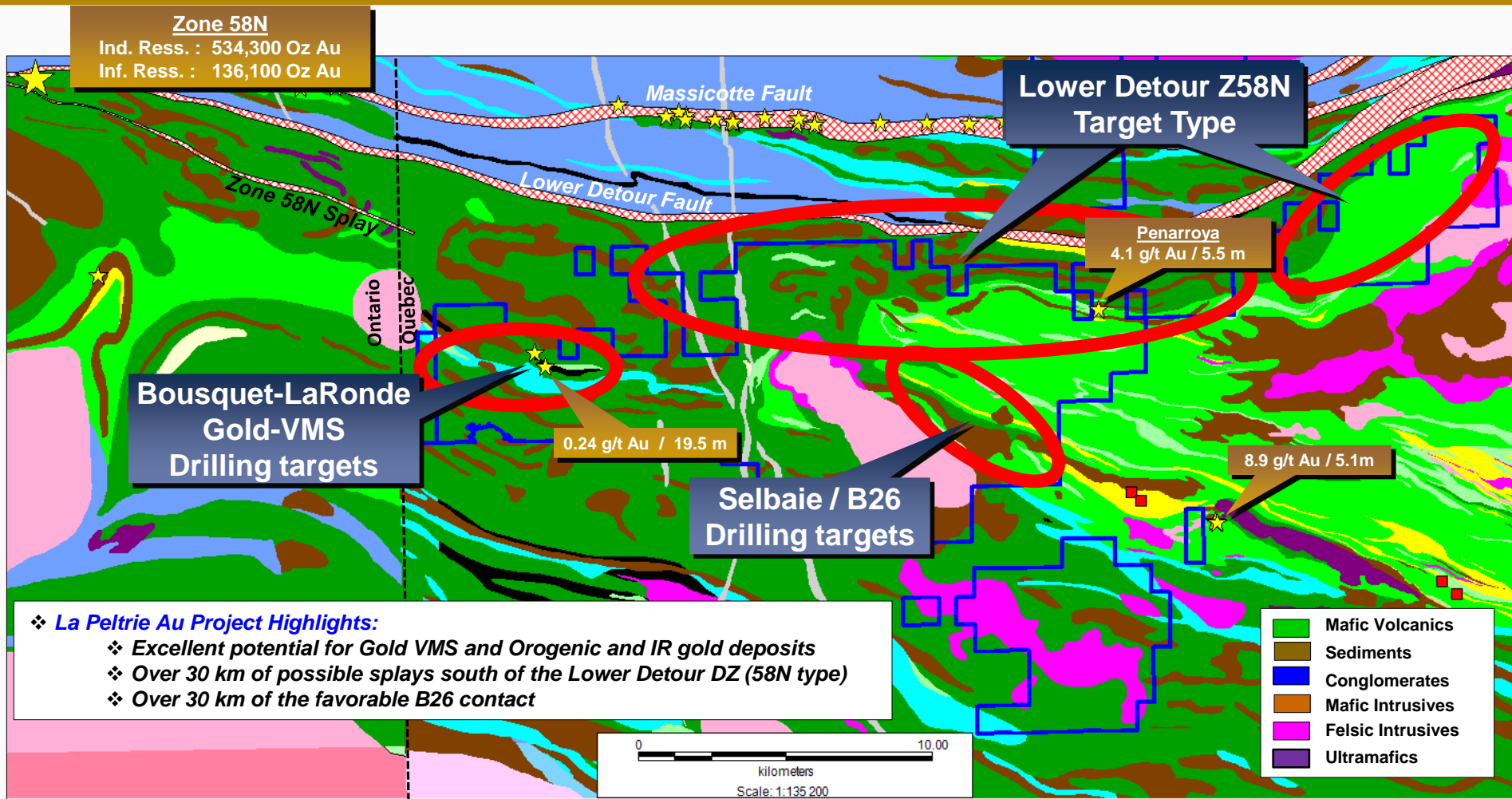


  Casault JV Property  
 ★ Gold Showings  
 ★ 2017 Vortex New Discovery



**1.38 g/t Au sur 26.2 m incl. 7.87 g/t Au over 2.2 m incl. 14.55 g/t Au over 0.8 m**

# LA PELTRIE TARGETS - SOUTH-EAST OF ZONE 58N



❖ **Adam Cu-Au Project Highlights :**

- ❖ Excellent potential for Gold & BM VMS deposits (B14 & B26 type)
- ❖ Over 10 km of favorable B14 & B26 contact

**Selbaie Mine**

Prod. 56.5 Mt @ 0.9% Cu, 1.9% Zn, 38 g/t Ag, 0.6 g/t Au

**Brouillan Synvolcanic Intrusion**

**B-14 Zone**

13 g/t Au / 8.75 m

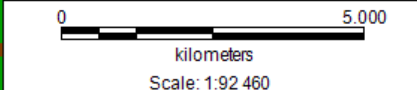
**B-26 Zone**

Ind. Res. : 6.97 Mt at 1.3% Cu, 1.8% Zn, 0.6 g/t Au, 43 g/t Ag  
 Inf. Res.: 4.41 Mt at 2.0% Cu, 0.2% Zn, 1.0 g/t Au, 9 g/t Ag

**New VTEM Targets in Brouillan Gr.**

**New IP Targets**

- Mafic Volcanics
- Sediments
- Conglomerates
- Mafic Intrusives
- Felsic Intrusives
- Ultramafics



Taibi Gr. Sediments

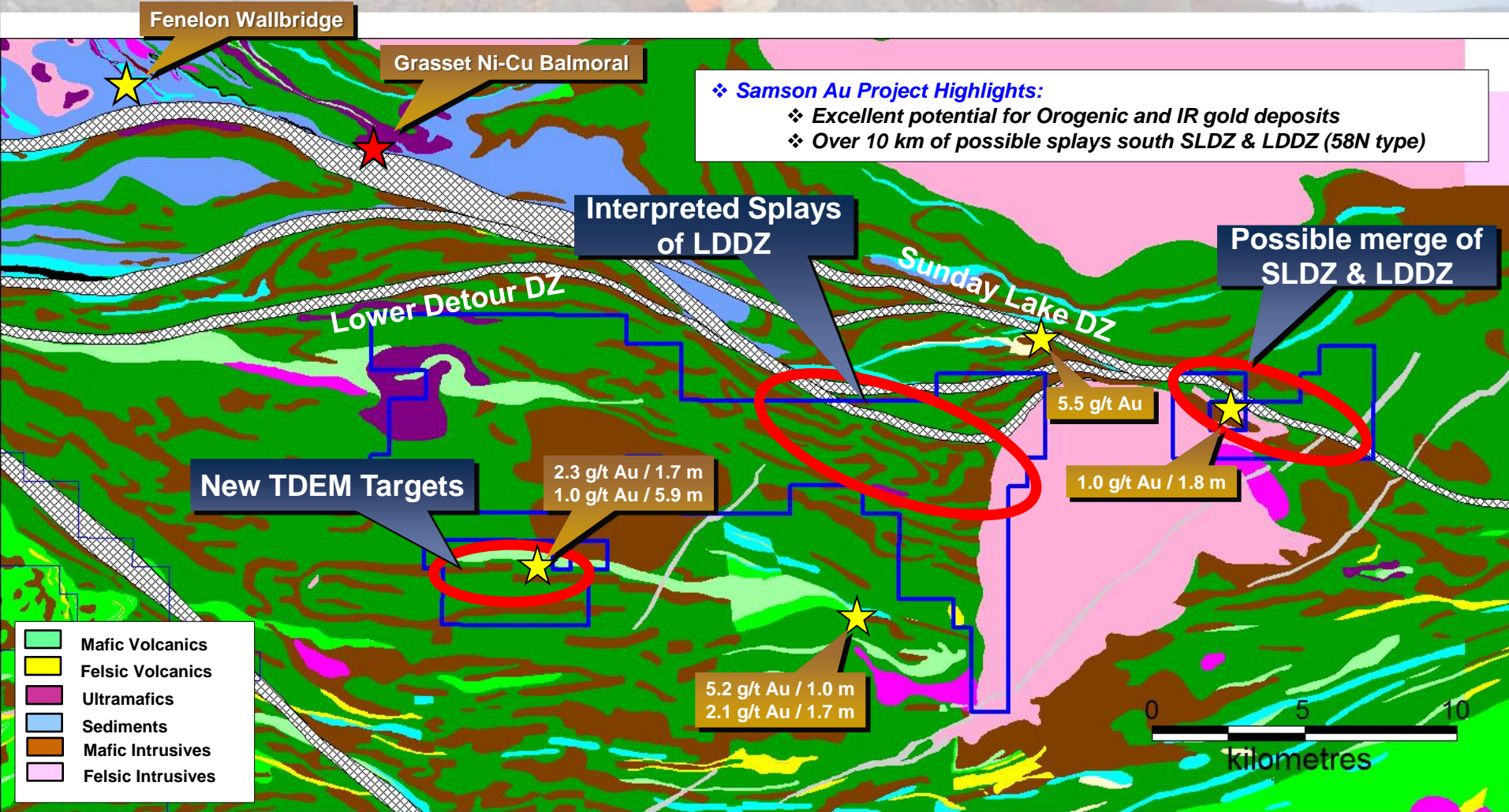
Enjlaran Gr, Th

Enjlaran Gr, Th

Brouillan Gr. CA

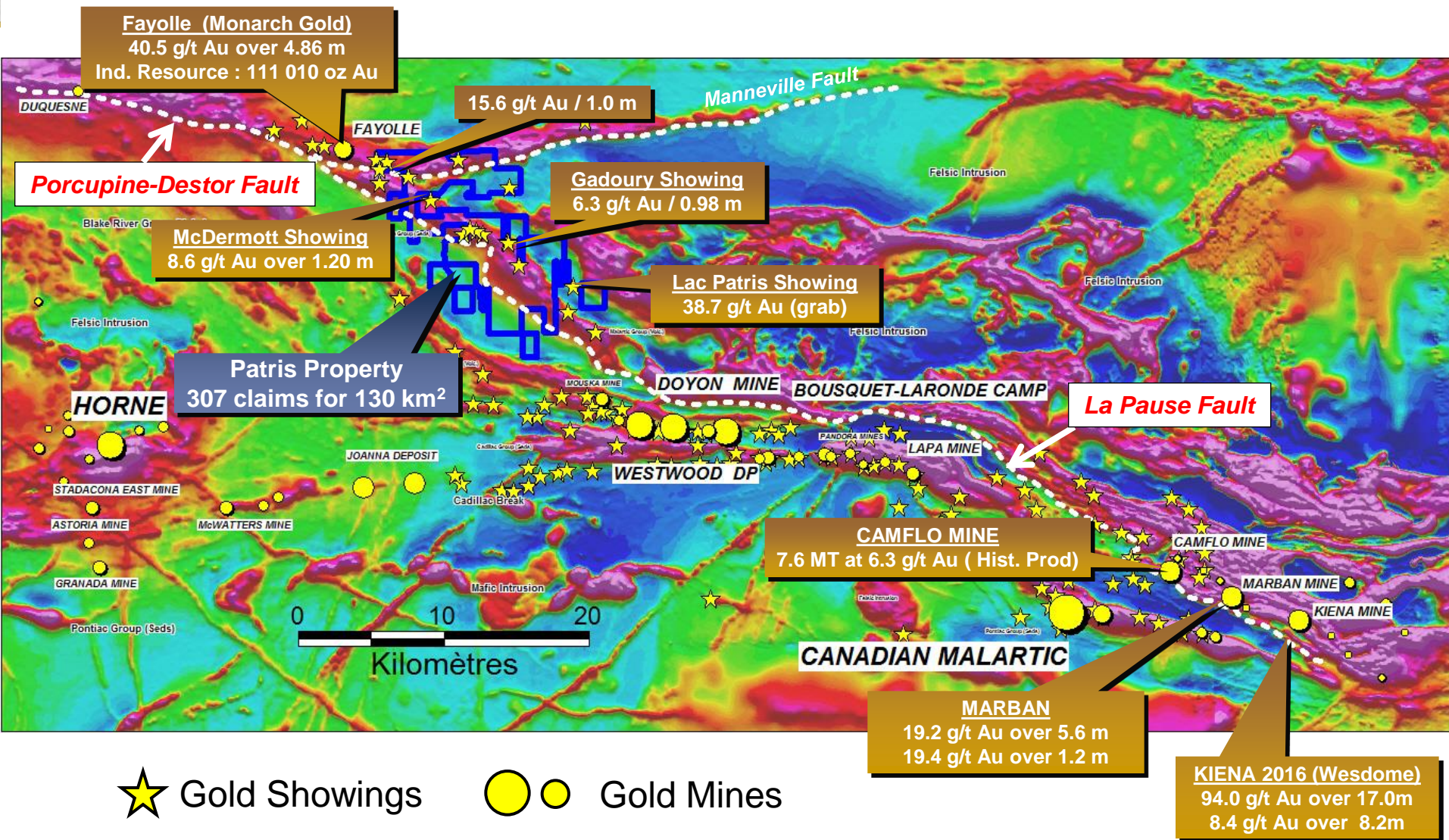
Brouillan Gr. CA

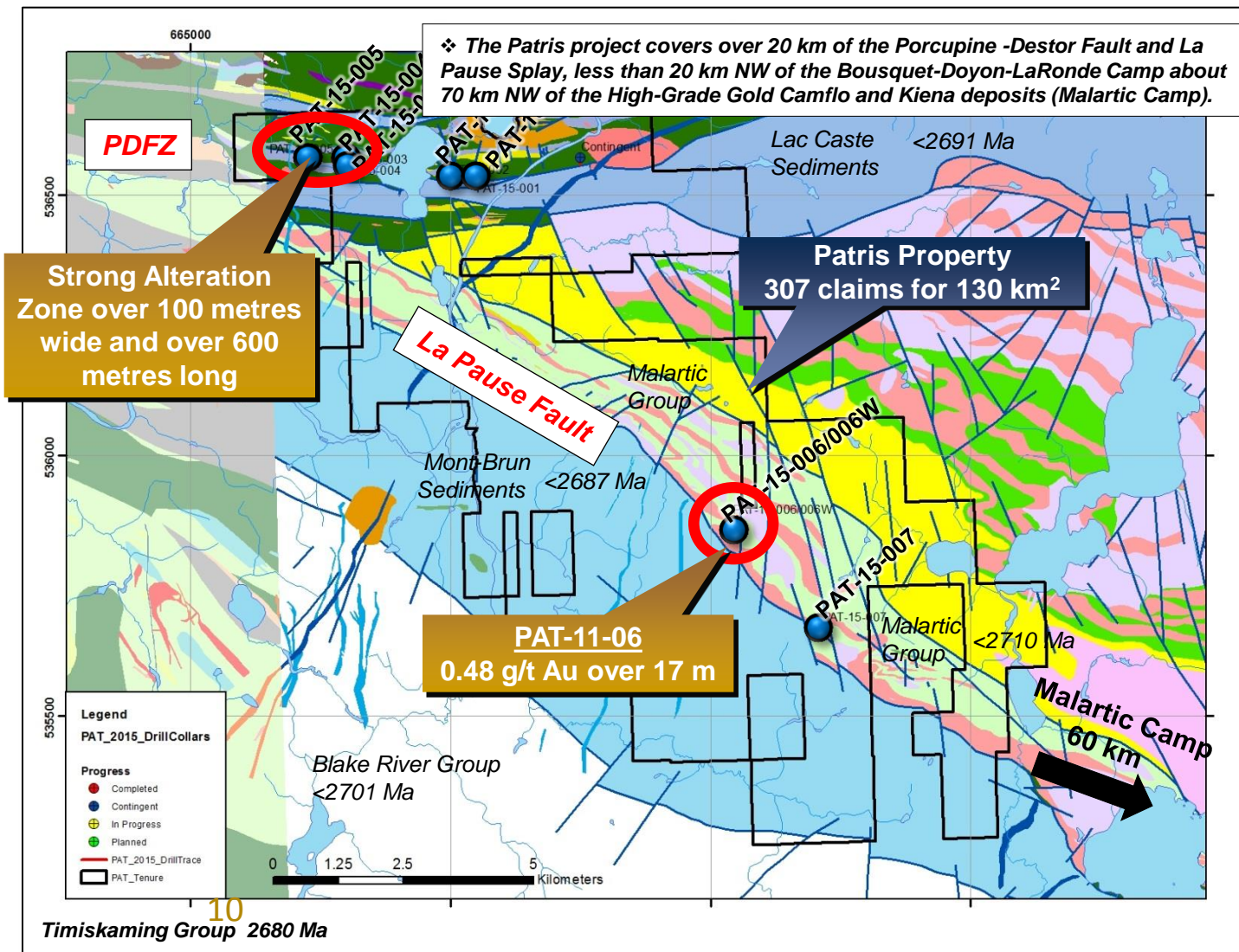
Bapst Fault





# PORCUPINE-DESTOR FAULT - HIGH GRADE GOLD





## PAT-15-03/04

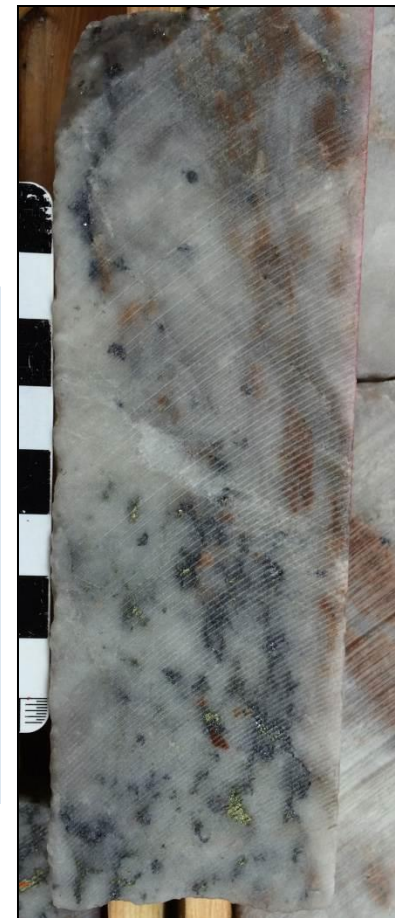
- Moderately anomalous W-Sb-Bi-S-Mo response
- Visible gold was noted at one section of hole PAT-15-03

## PAT-15-05

- Very strong pathfinder geochemistry for orogenic gold systems
- Intense alteration of host mafic and ultramafic volcanic rocks and syenite dykes.
- 2 Zones: 1) highly anomalous Ag-Bi-Pb response, and 2) highly anomalous Bi-Mo-(Ag-S-Pb) response



**PAT-15-03**  
29.9m (VG)



**PAT-15-05**  
176.9m

# CADILLAC BREAK – LONGITUDINAL SECTION

