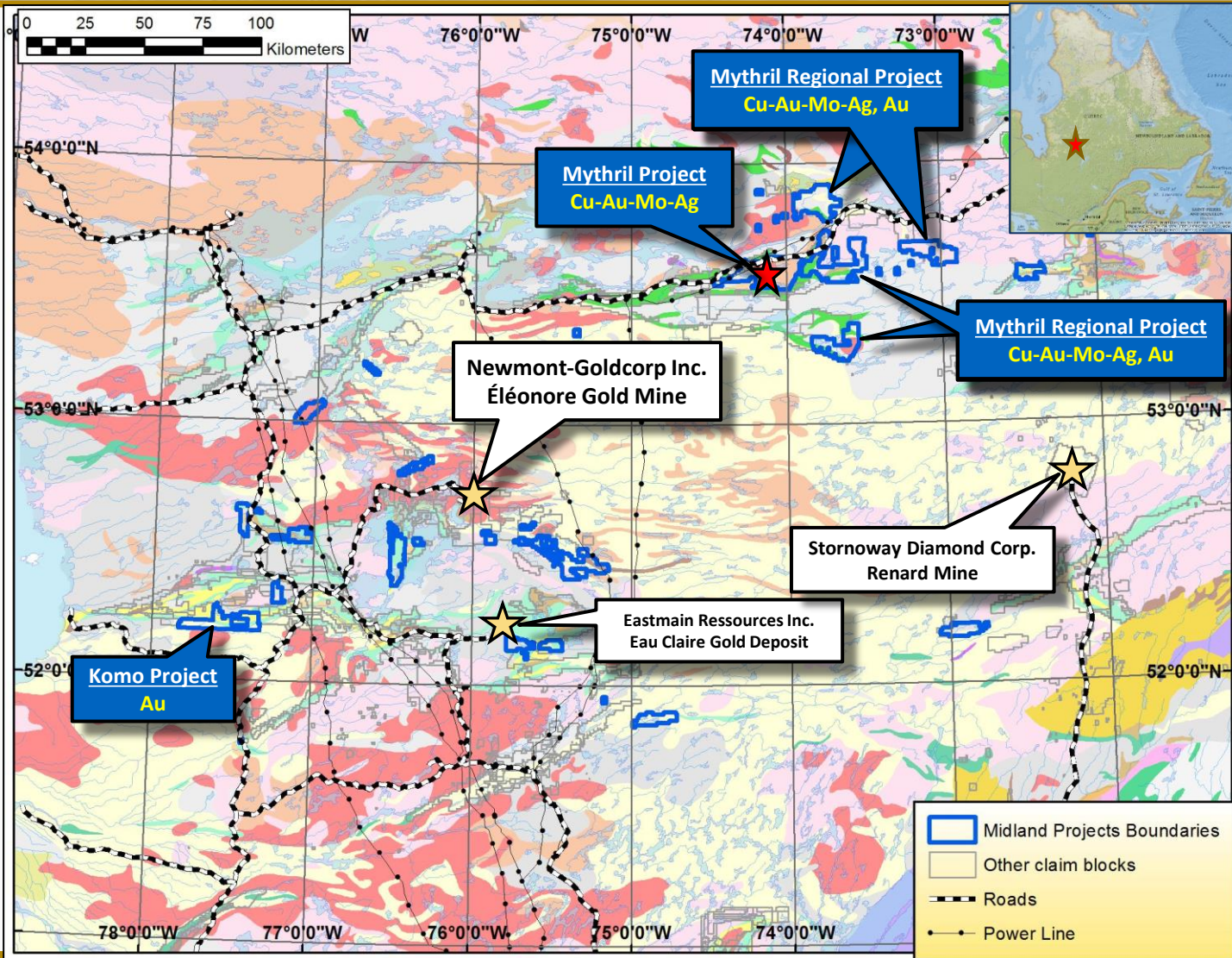
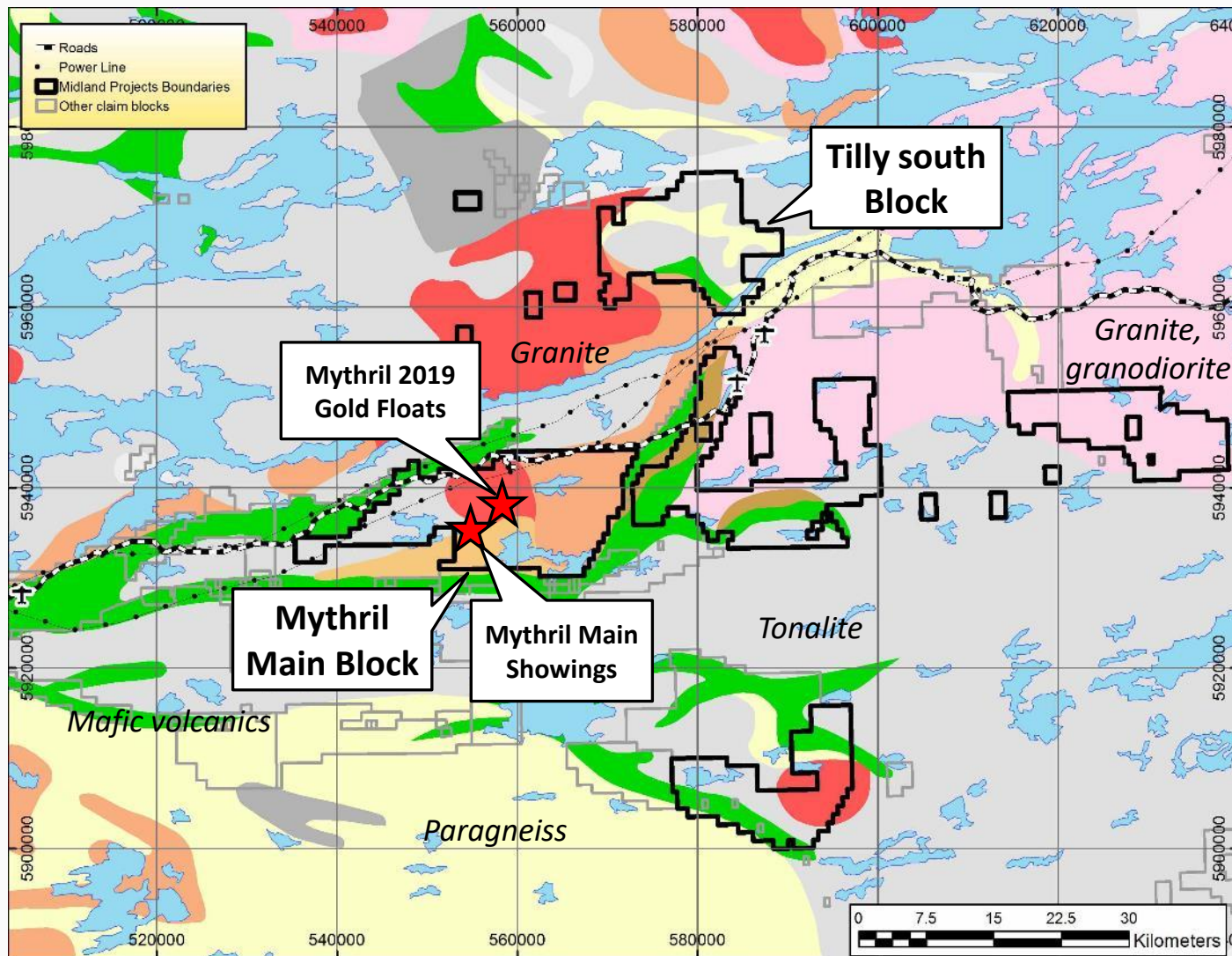


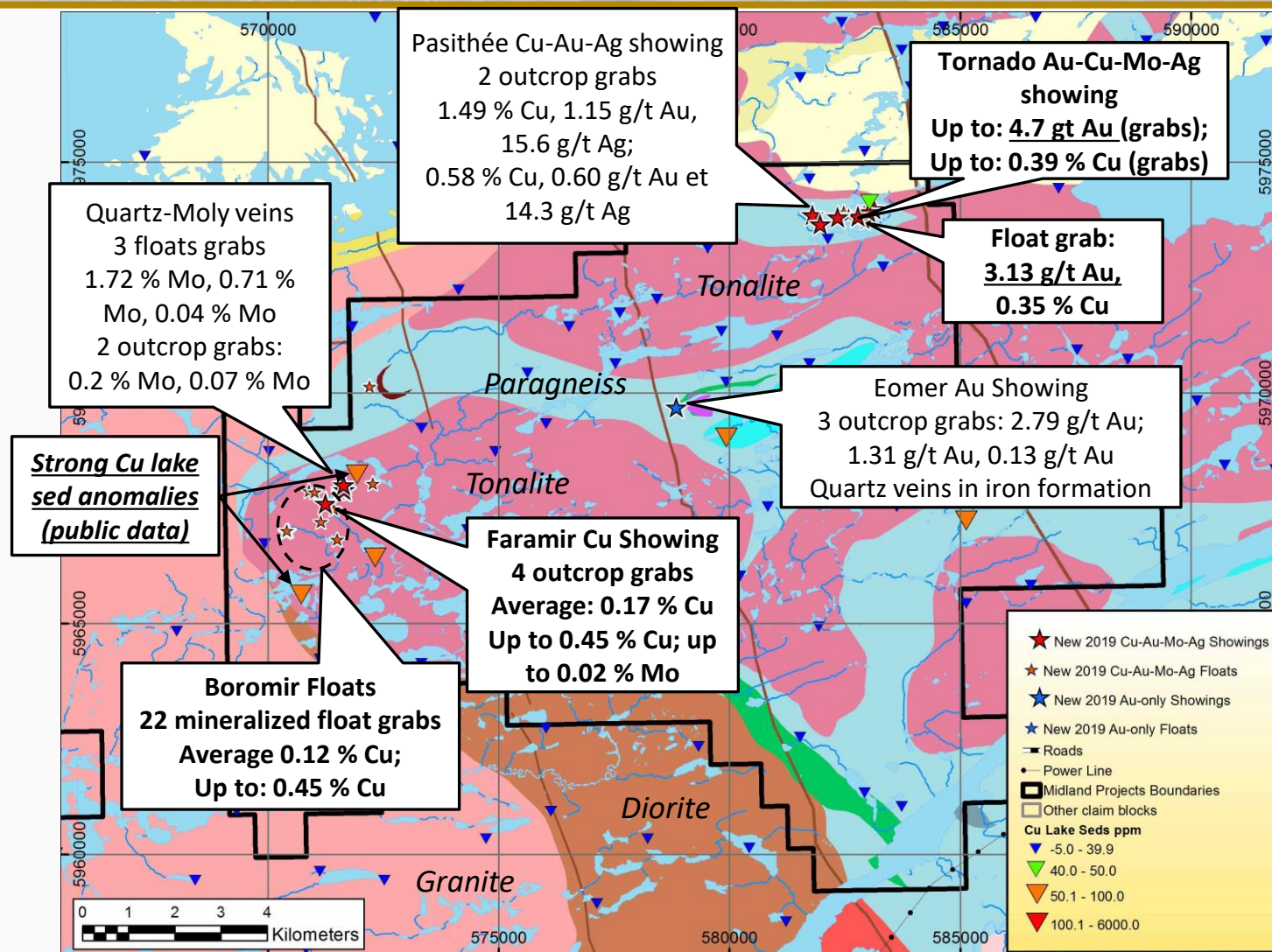
Midland Mythril Discovery Location

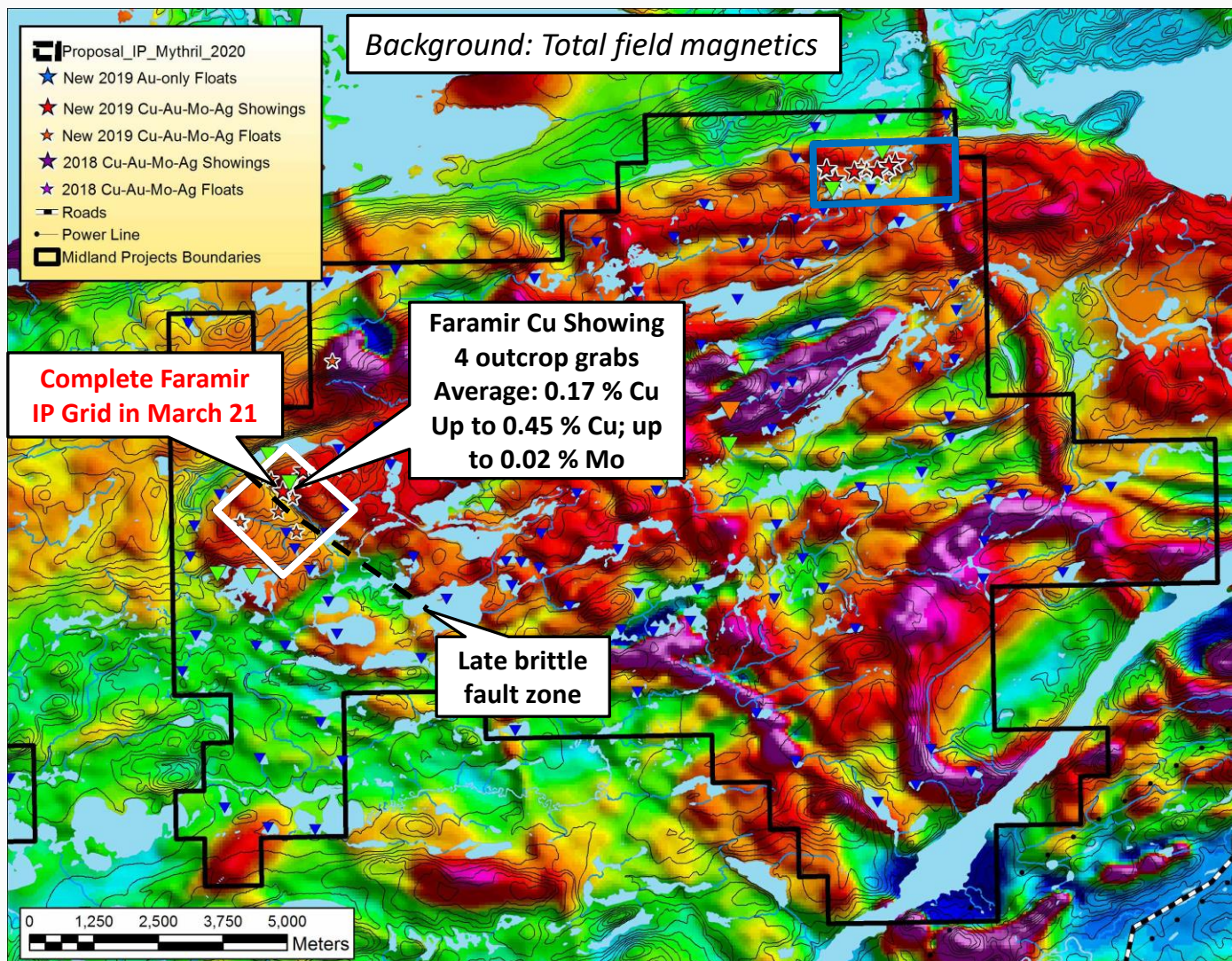


Mythril + Mythril Regional Claim Blocks

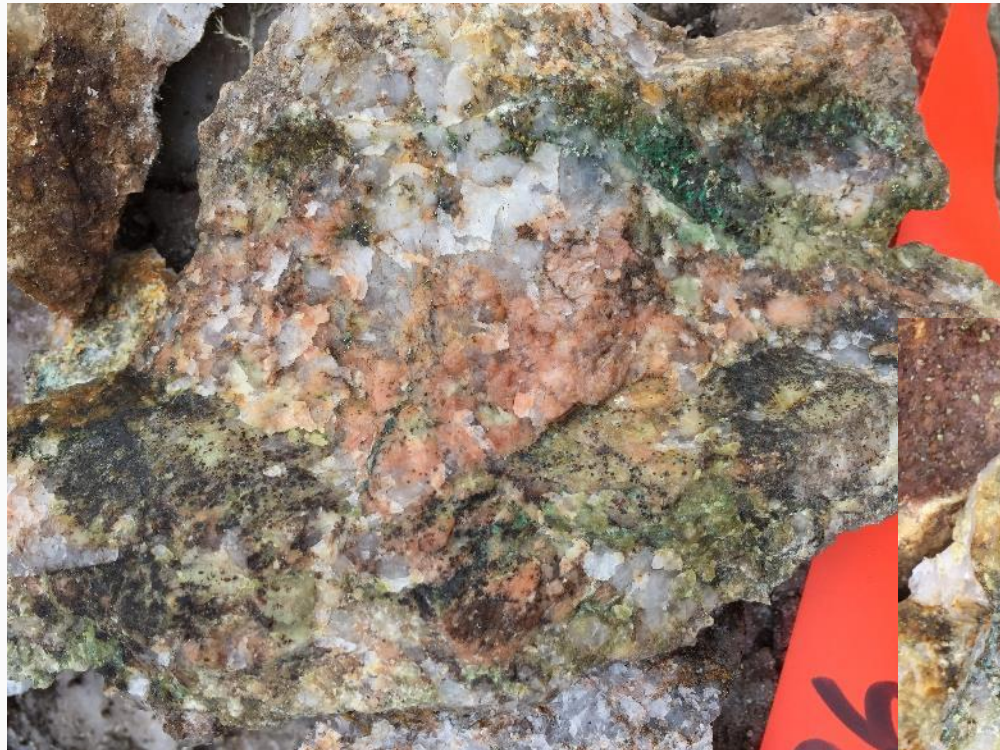


Tilly South – 2019 Showings





Faramir Cu Showing

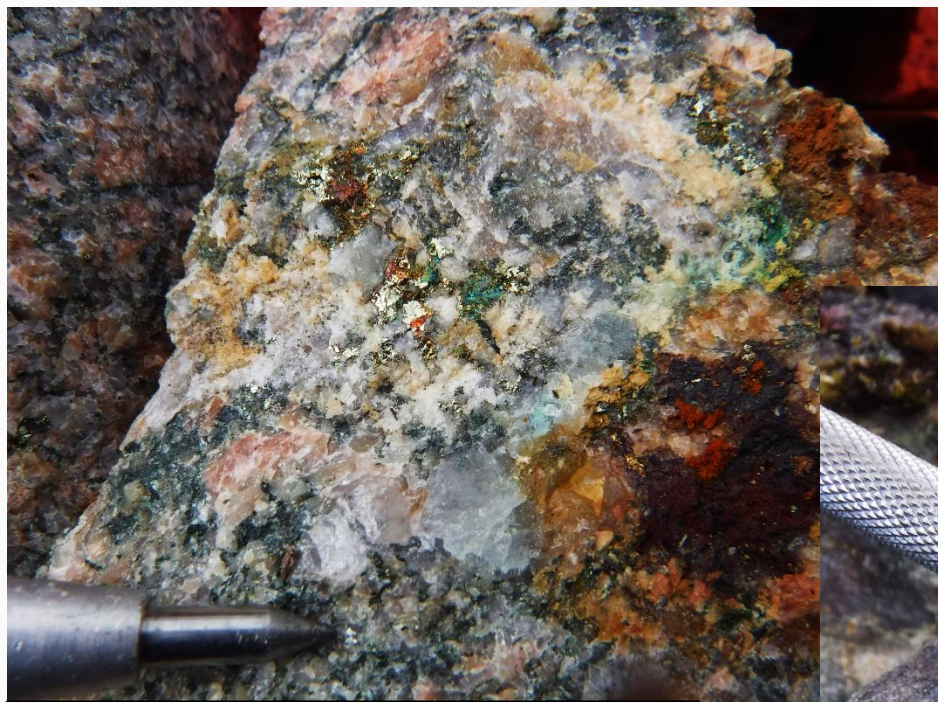


*S410738 (outcrop)
Granite, altered in chlorite-epidote, injected with
quartz and ankerite veins
0.34 % Cu, 0.02 % Mo*



*S410736 (outcrop)
Granite, strongly altered in epidote, K-feldspar
and injected with quartz, chlorite vein
stockwork, disseminated chalcopryite and pyrite
0.11 % Cu*

Boromir Cu-Bearing Floats

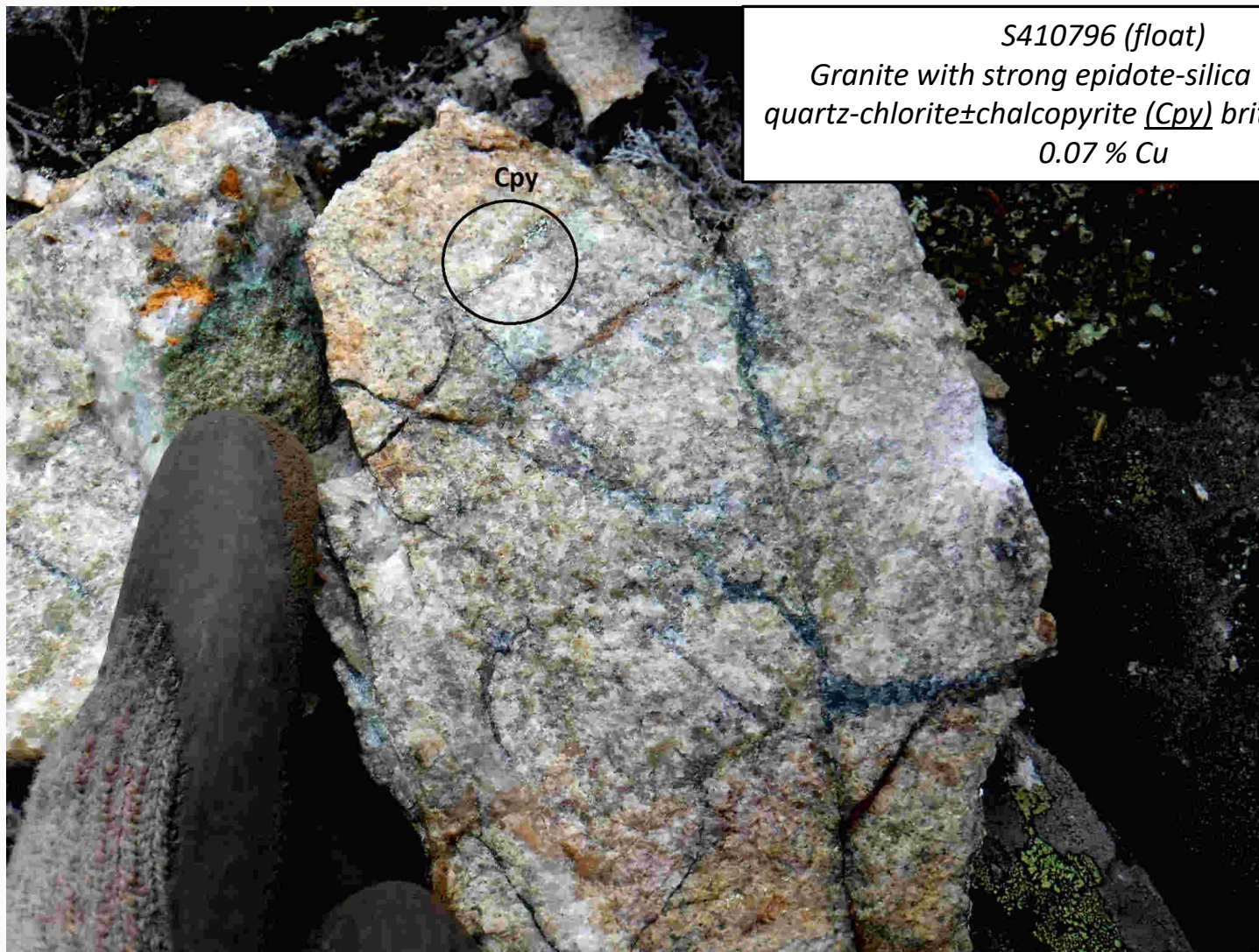


*S410629 (float)
Strongly chloritized granite with intense
quartz-chlorite stockwork, vein and
disseminated chalcopyrite+malachite
0.26 % Cu*

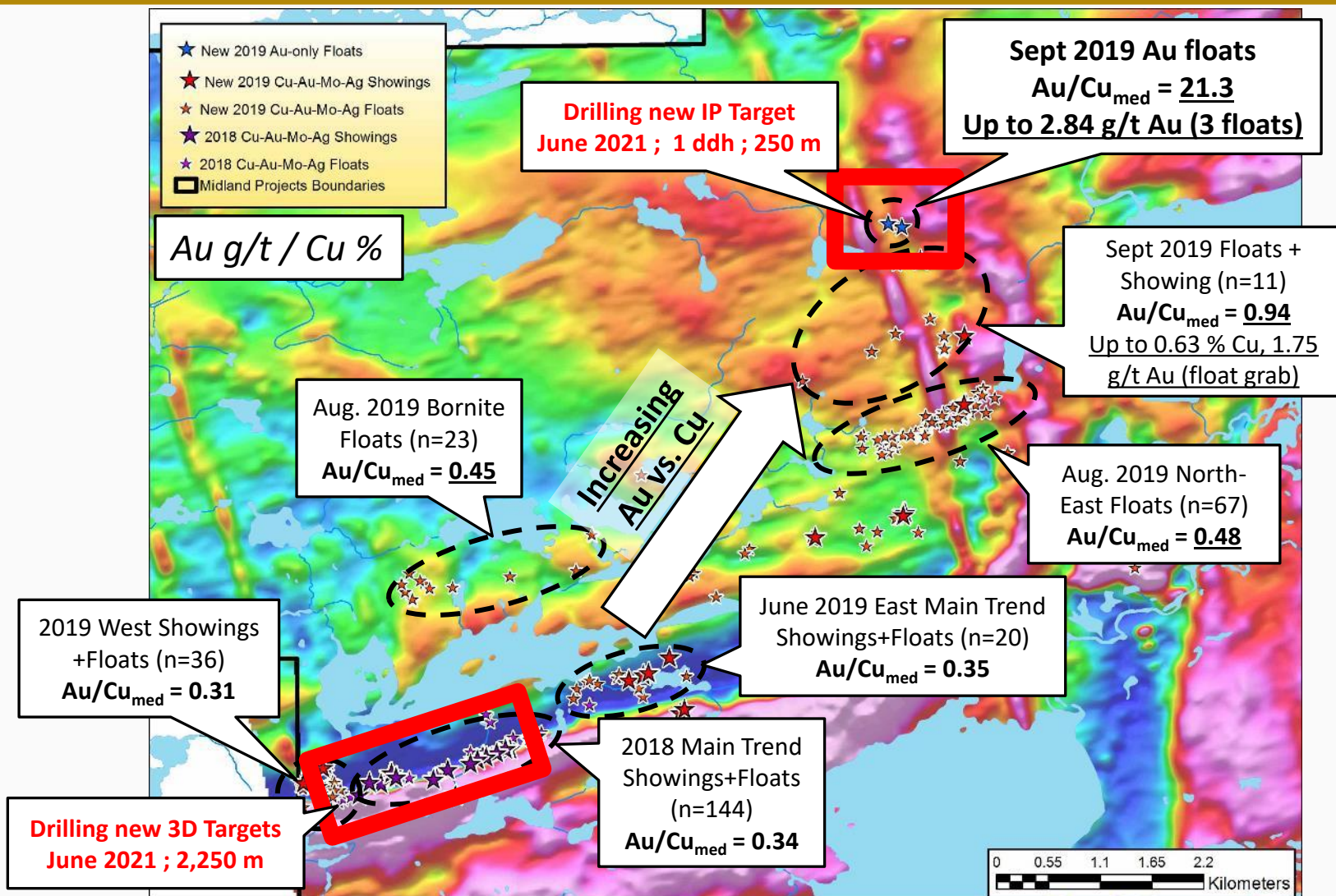
*S410630 (float)
Granite with chlorite stockwork, vein and
disseminated chalcopyrite+malachite
0.16 % Cu*



Boromir Cu-Bearing Floats



S410796 (float)
Granite with strong epidote-silica alteration,
quartz-chlorite±chalcopyrite (Cpy) brittle stockwork
0.07 % Cu



Mythril – Gold-bearing Floats



*S410469 (float)
Granodiorite with bands altered in
biotite and mineralized in trace
magnetite and chalcopyrite
2.83 g/t Au, 0.13 % Cu, 15.2 g/t Ag*

*S410492 (float)
Granodiorite with granite dykes, quartz
veinlets, biotite alteration and 1% pyrite
2.84 g/t Au, 0.06 % Cu, 2.0 g/t Ag*



- A total of 10 drilling holes for 2,500m
- 9 Holes on main Mythril Trend and one reconnaissance to the north

DDH Proposed	Azimuth	Dip	Depth
MYT-21-A	345	50	150
MYT-21-B	345	50	250
MYT-21-C	345	50	150
MYT-21-D	345	50	150
MYT-21-E	345	50	250
MYT-21-F	345	50	250
MYT-21-G	345	50 <td 450	
MYT-21-H	345	50	300
MYT-21-I	345	50	300
MYT-21-J	60	50	250

