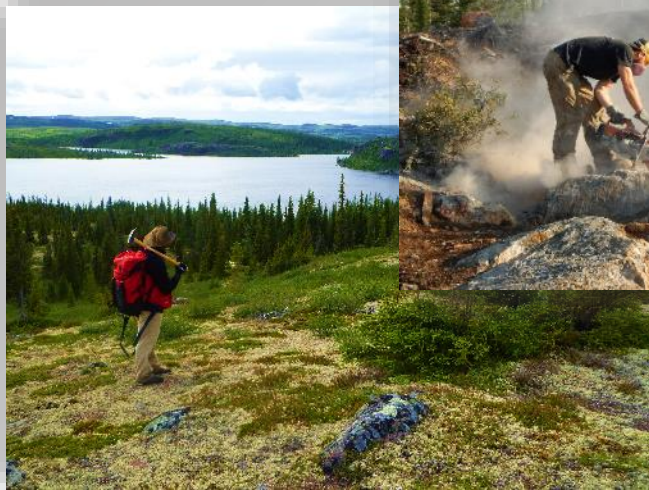


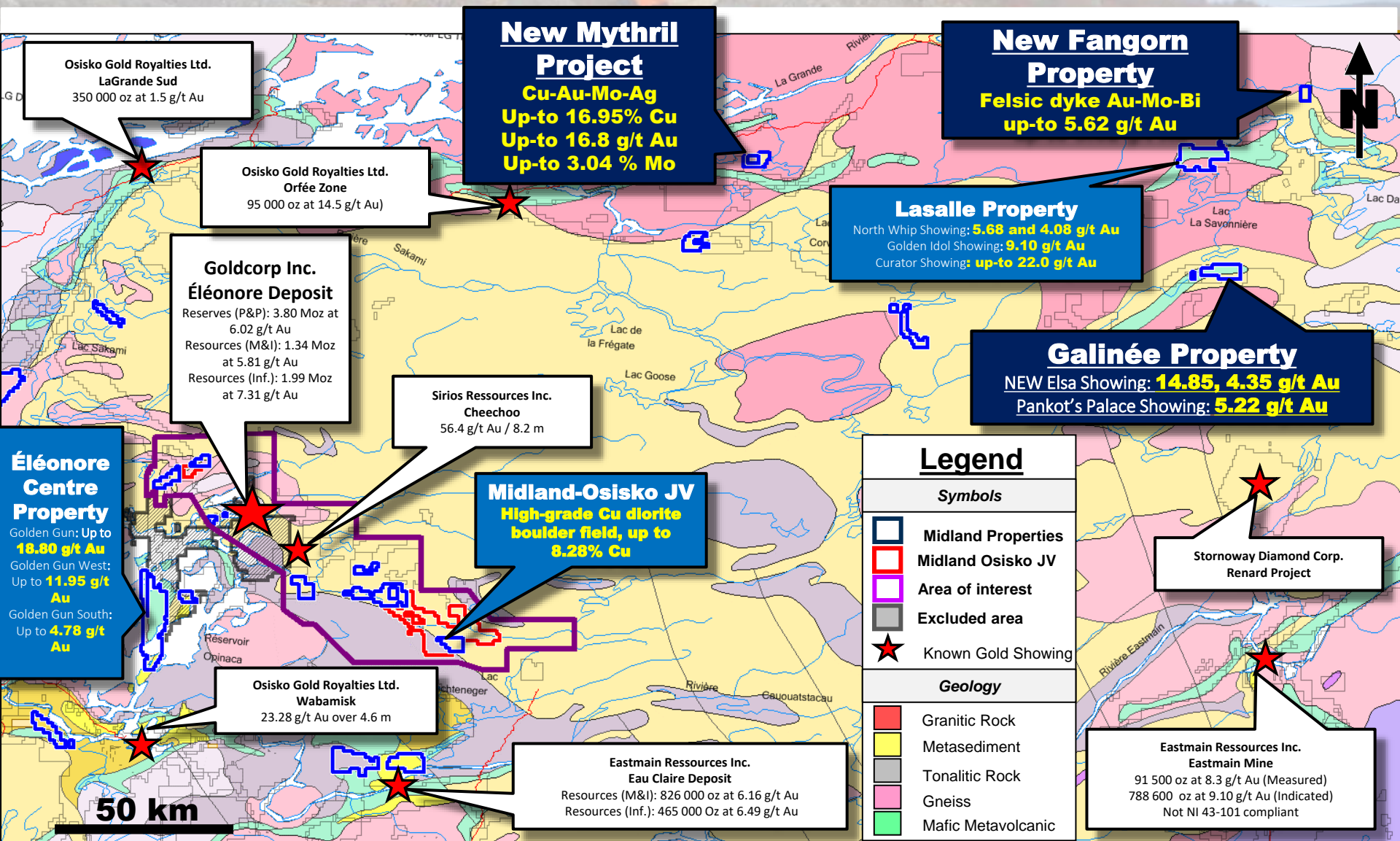


Galinée Gold Project

June 2021

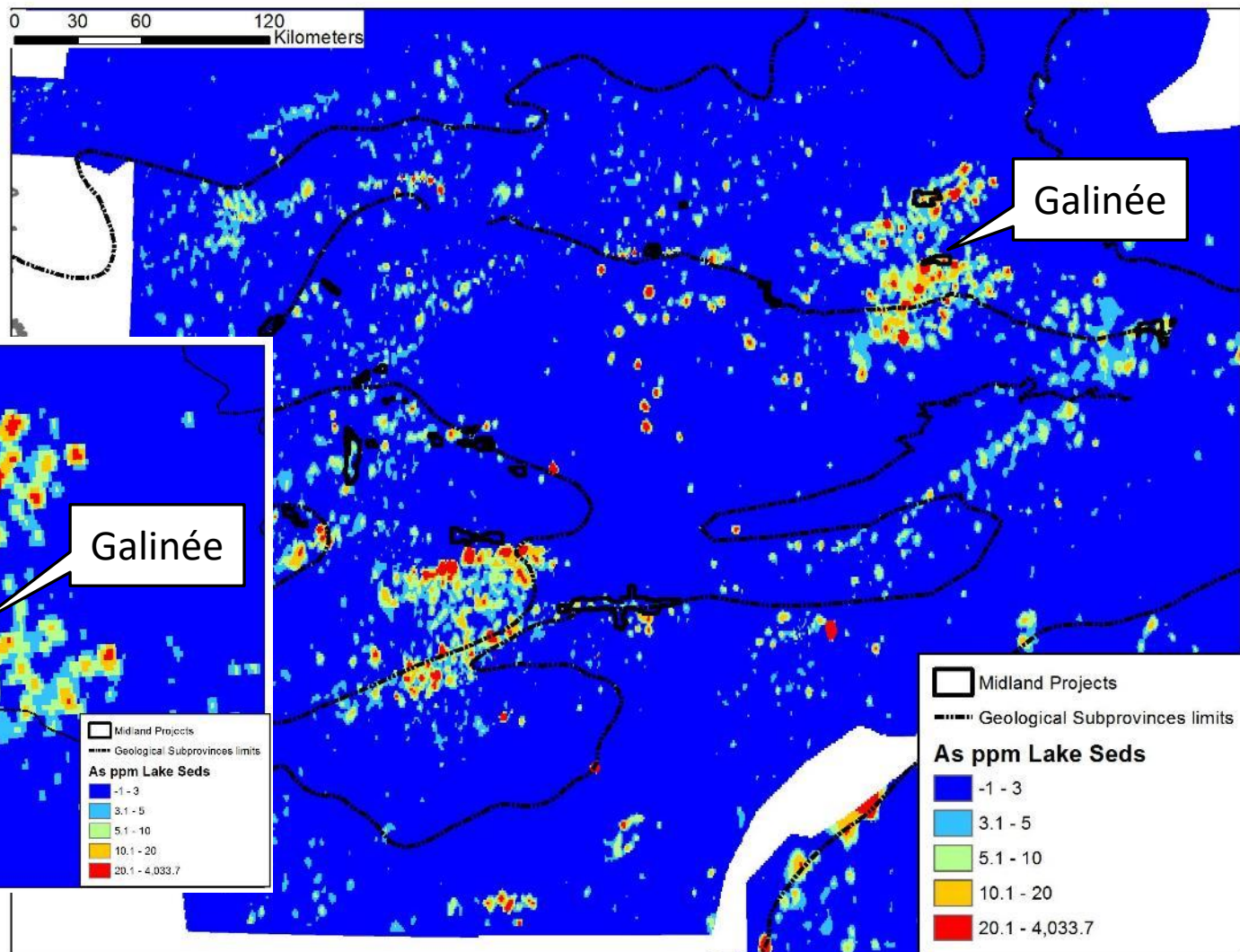


James Bay Gold – 2018 Highlights

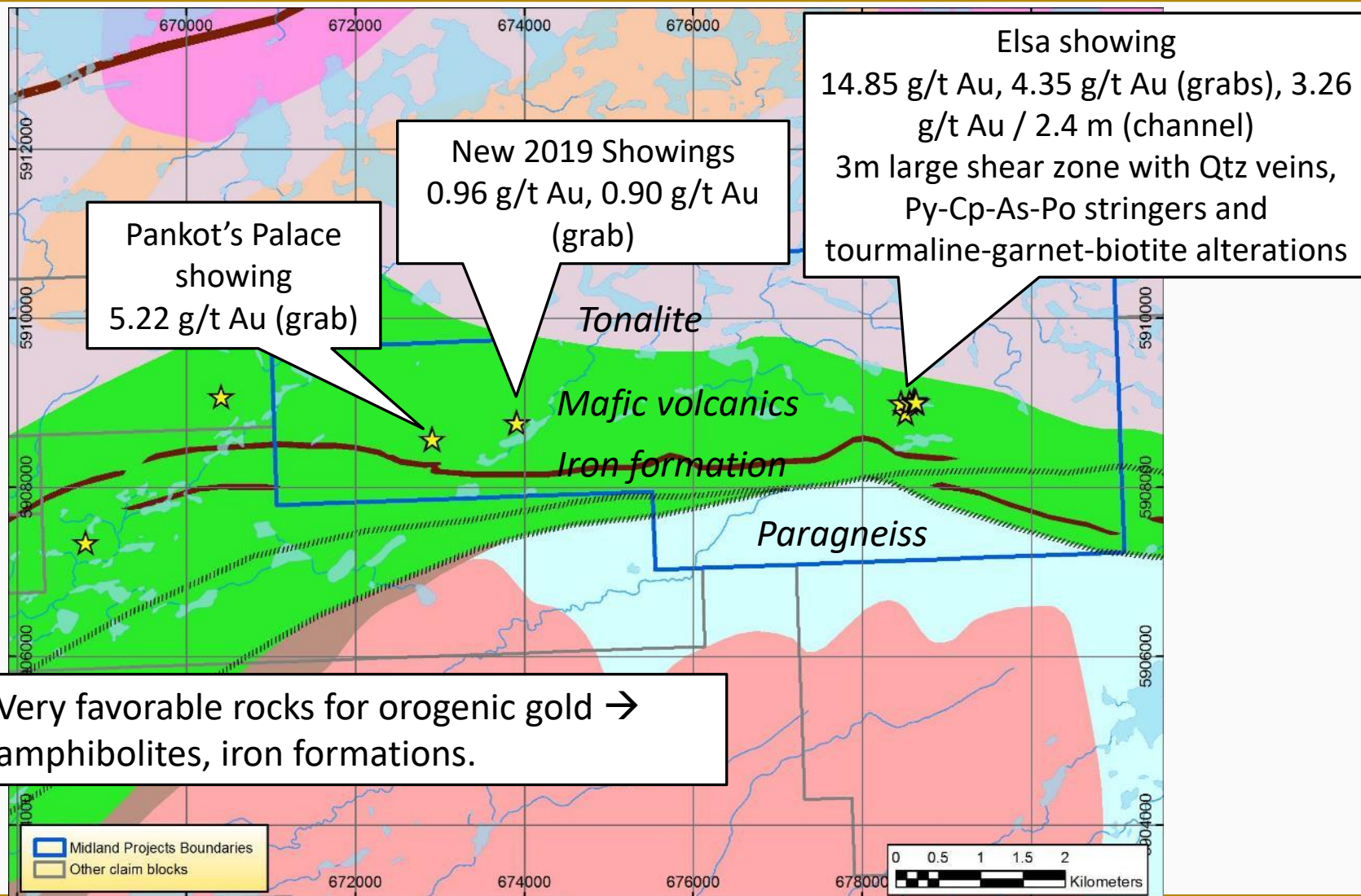


Galinée Block – Regional Lake As Sediment Data

Part of a very
prominent regional
As lake sed anomaly

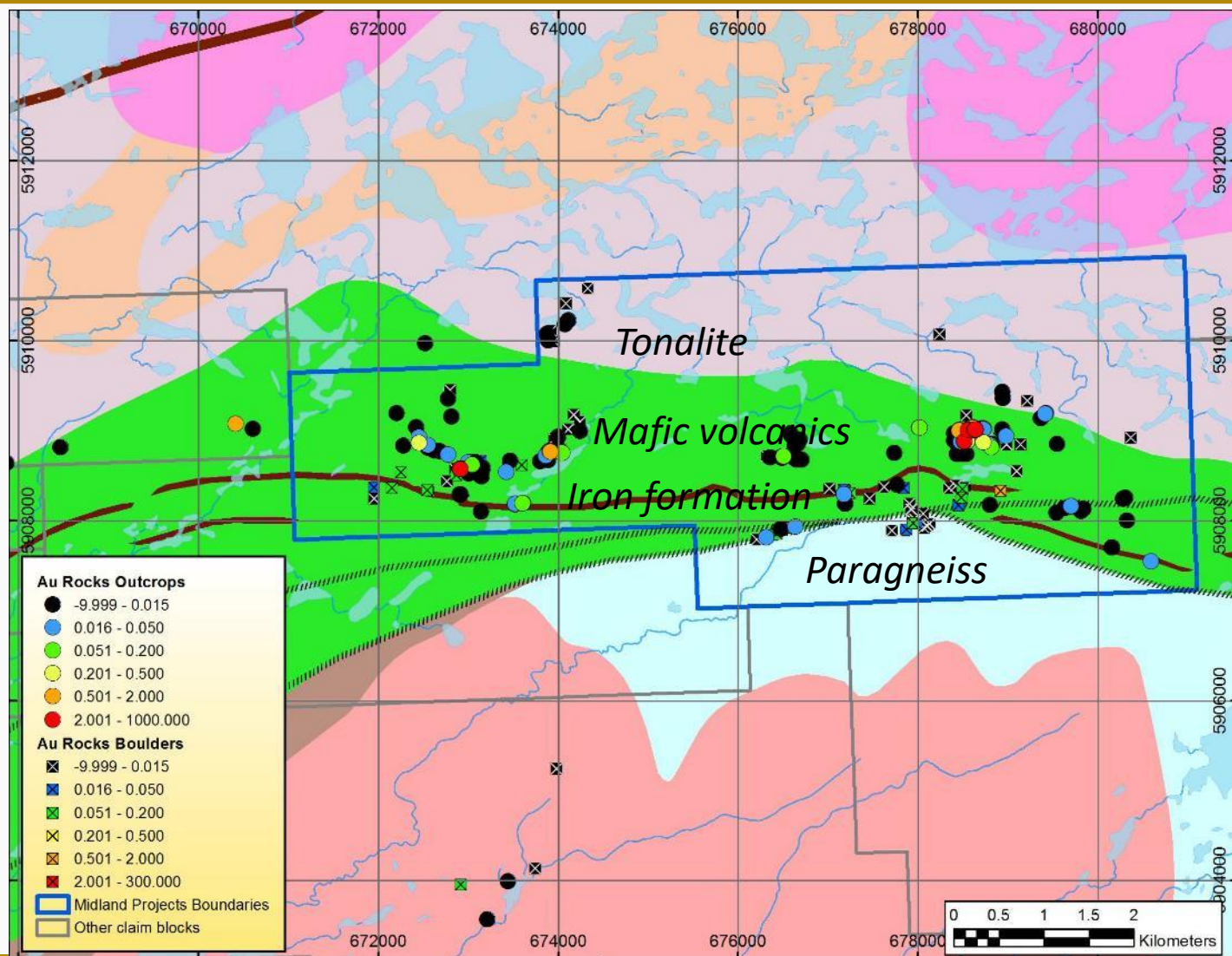


Galinée Block – Geology and Gold Showings



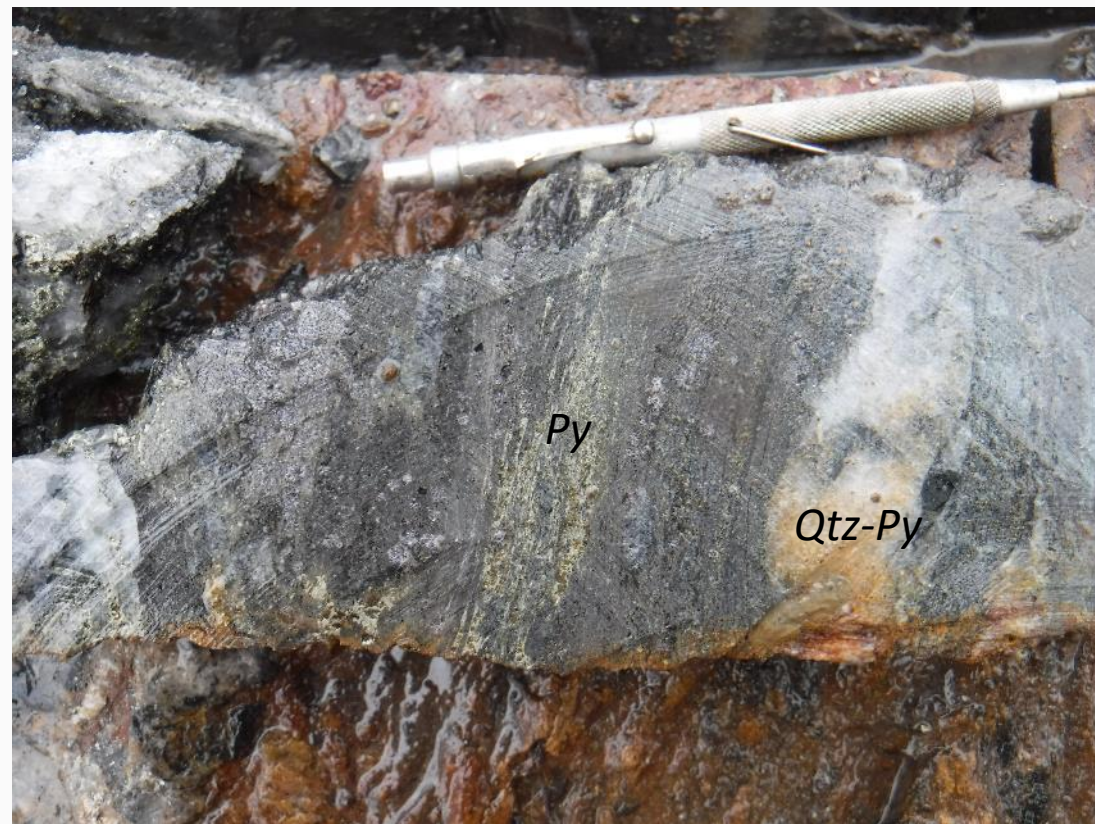
➤ Very favorable rocks for orogenic gold → amphibolites, iron formations.

Galinée Block – Outcrop and Boulders Sampling

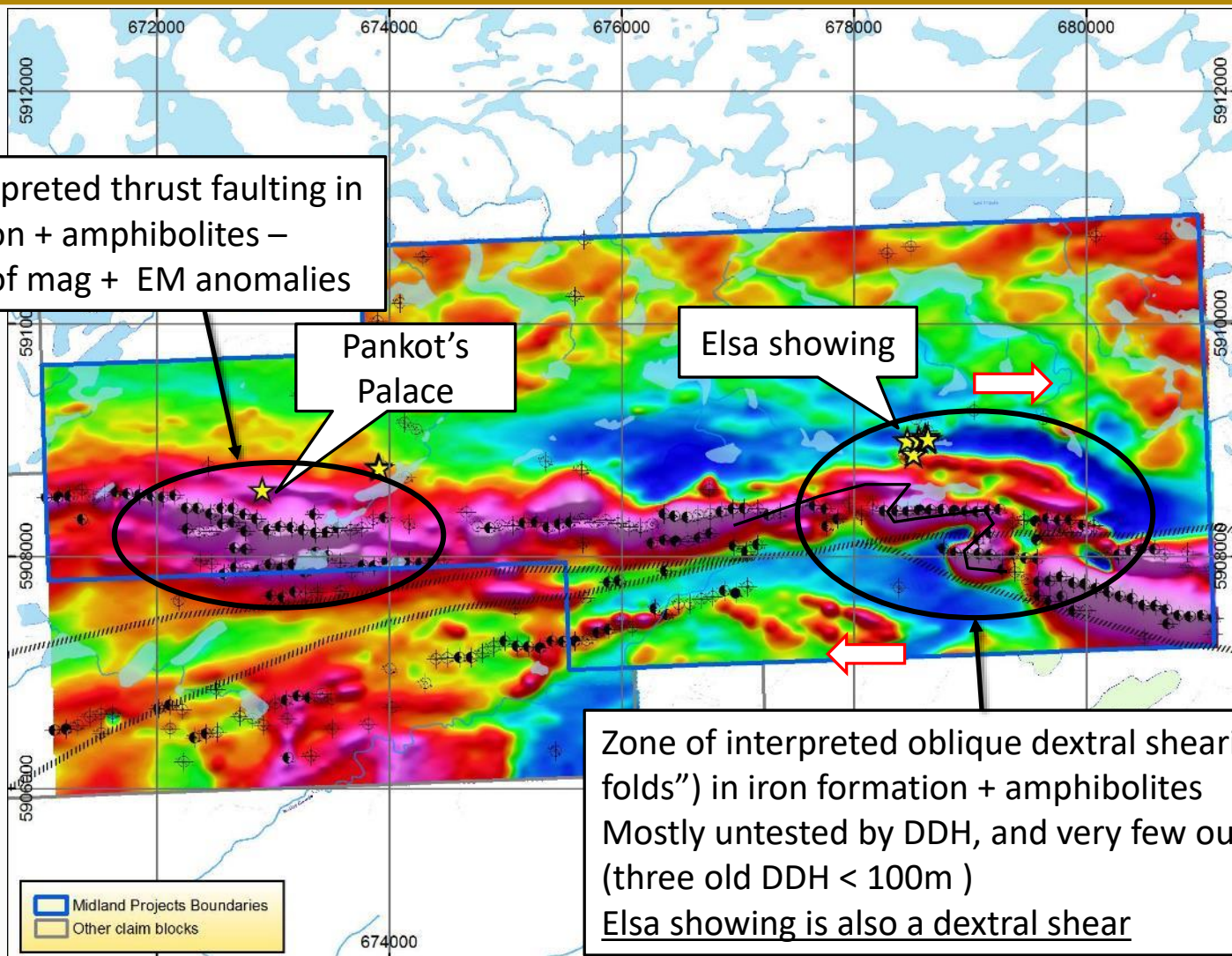


New Elsa Showing

- Found in June 2018 by surface prospection!
- 3m large shear zone with Qtz veins, Py-Cp-As-Po stringers and tourmaline-garnet-biotite alterations
- Channeled in September 2018; pending results

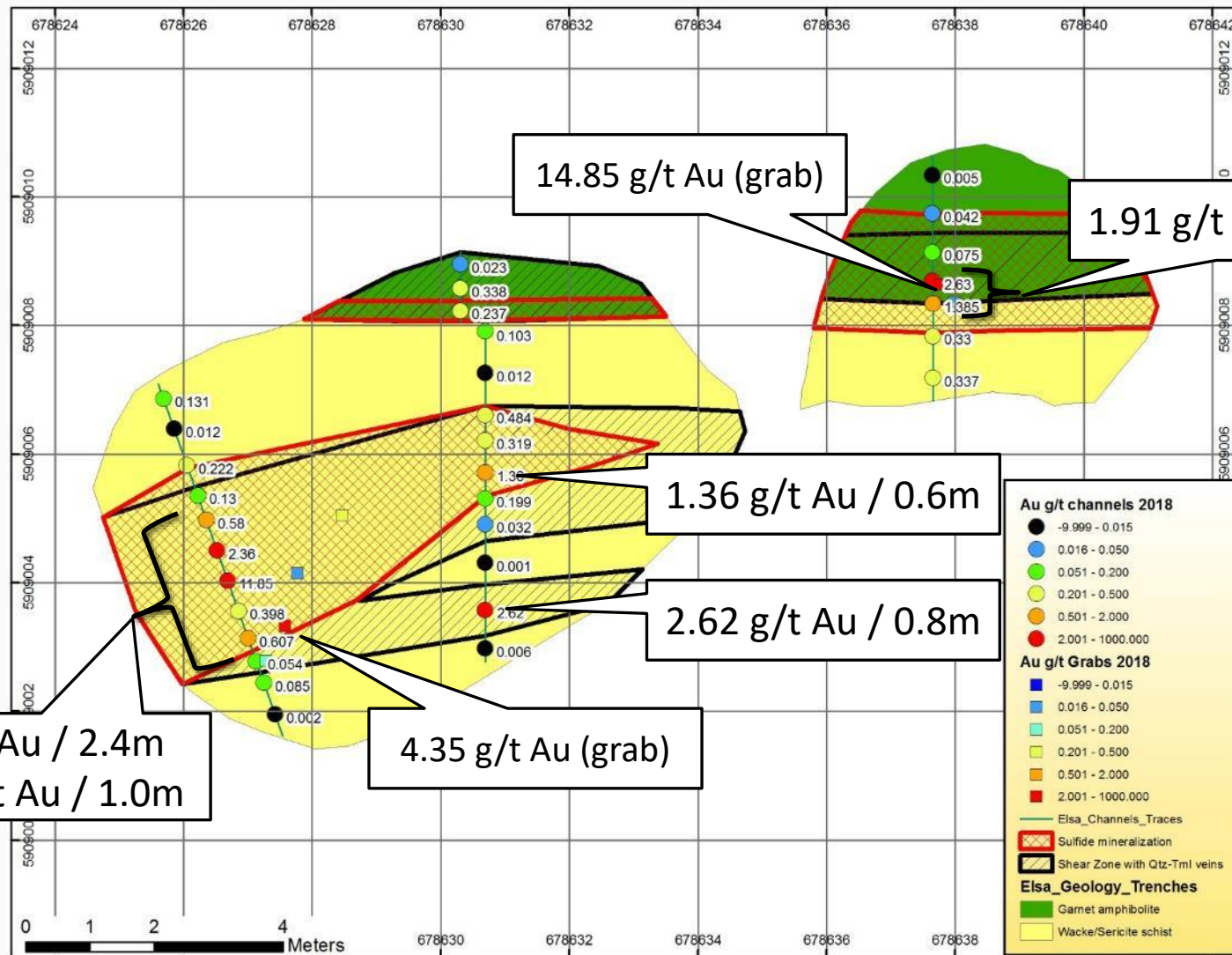


Galinée Project- Geophysics and Structures from 2017 High-res Mag + EM



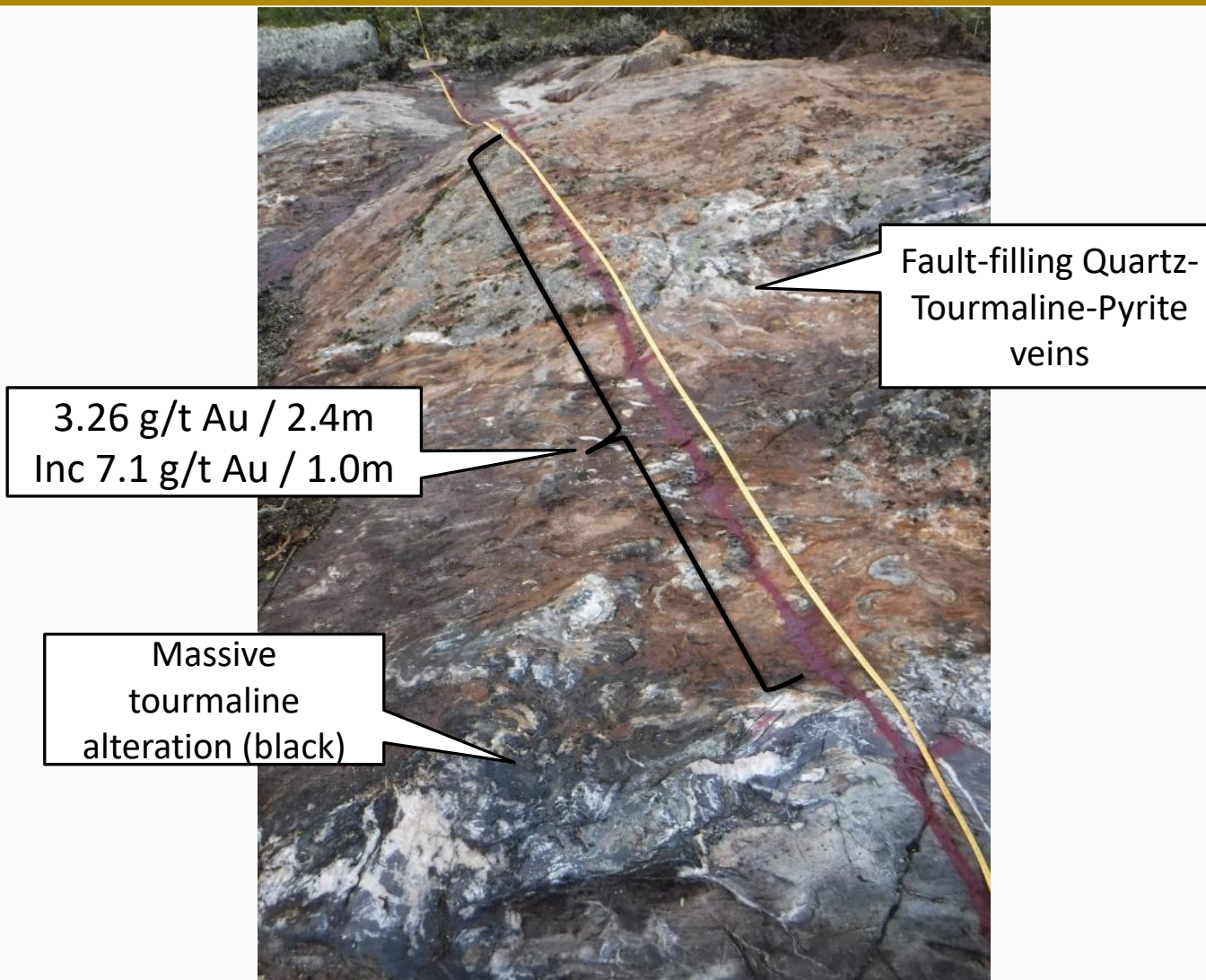


Elsa Gold Zone 2018 Channels and Grabs





Elsa Gold Zone



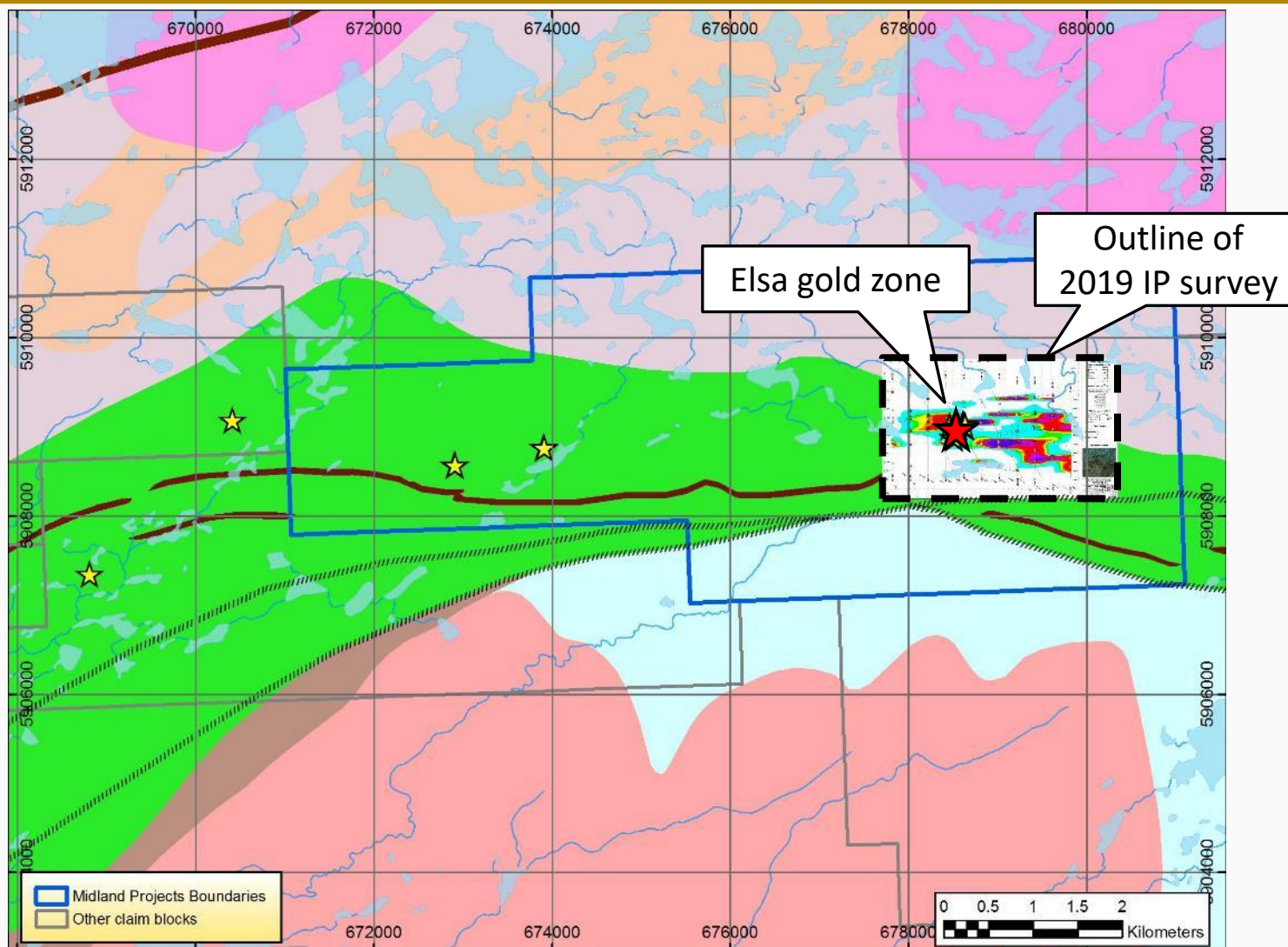


Visible Gold in Quartz Veins

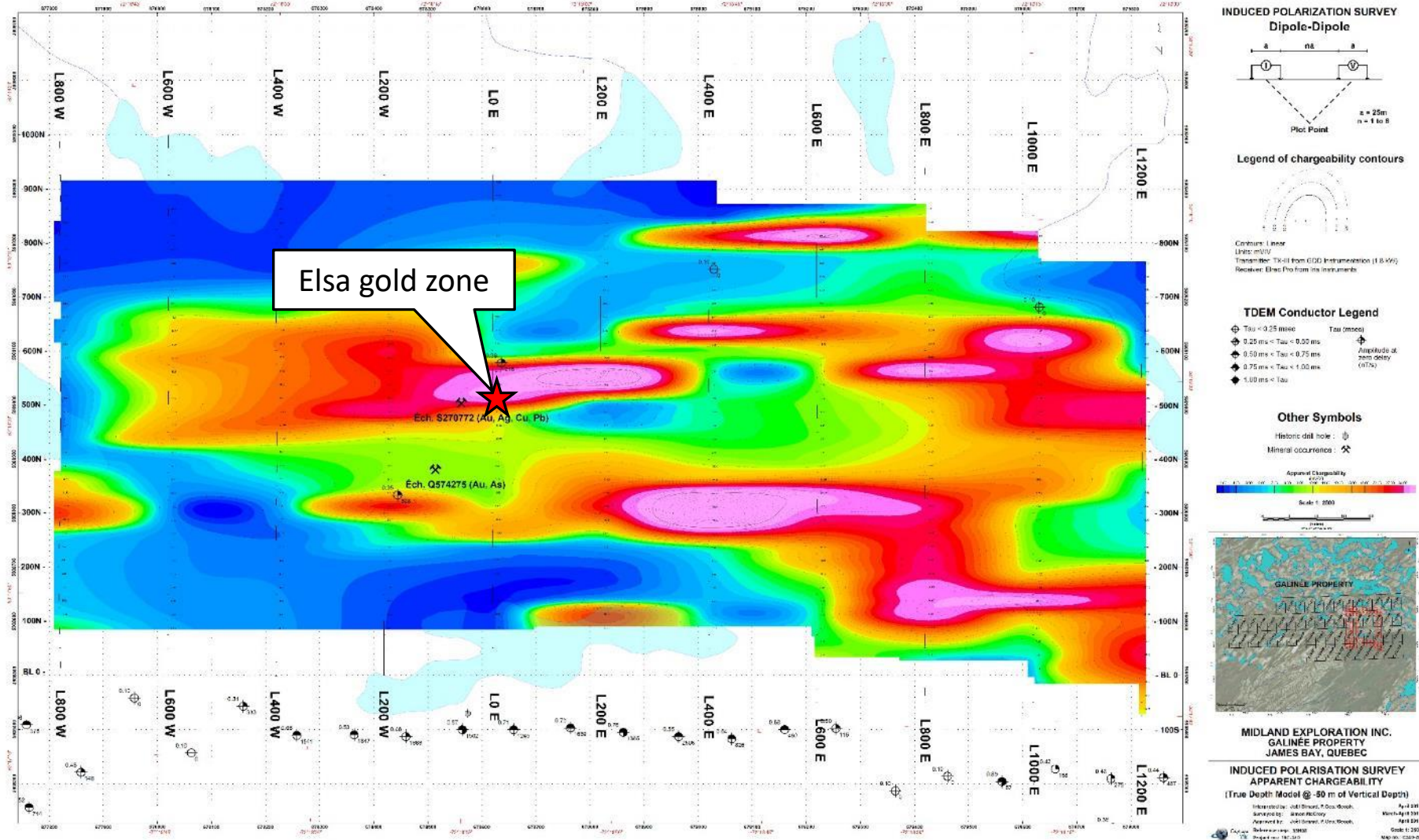




2019 IP Survey

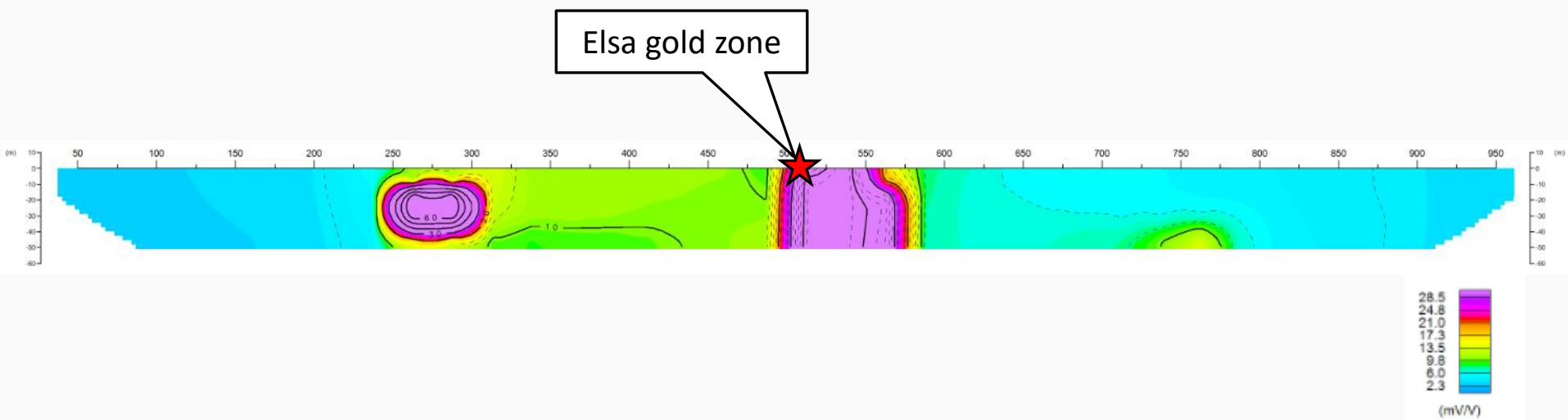


2019 Ground Model of Chargeability at -50m





2019 Chargeability Inversion



Galinée Project- Highlights

- ✓ Strong regional arsenic lake sediment footprint, indicating abundant arsenopyrite-bearing mineralization.
- ✓ Very favorable host rocks for orogenic Au deposits – iron formation and amphibolites → competent rocks and high Fe (reactive with fluids).
- ✓ Amphibolite metamorphism with very strong and widespread greenschist facies retrograde overprint → Lots of late-stage fluids.
- ✓ Favorable structural features that are poorly tested – Dextral shearing zone in amphibolites / iron formations in the eastern part, thrust stacking in the western part.
- ✓ New high-grade orogenic gold showing (quartz-tourmaline-pyrite-arsenopyrite-scheelite in shear zone) associated with dextral shearing – Up to 14.85 g/t Au (Elsa showing), 3.26 g/t Au / 2.4m in channels, with visible gold.
- ✓ Very limited historical drilling, incomplete surface prospection, only 6 DDH, all less than 200m deep.