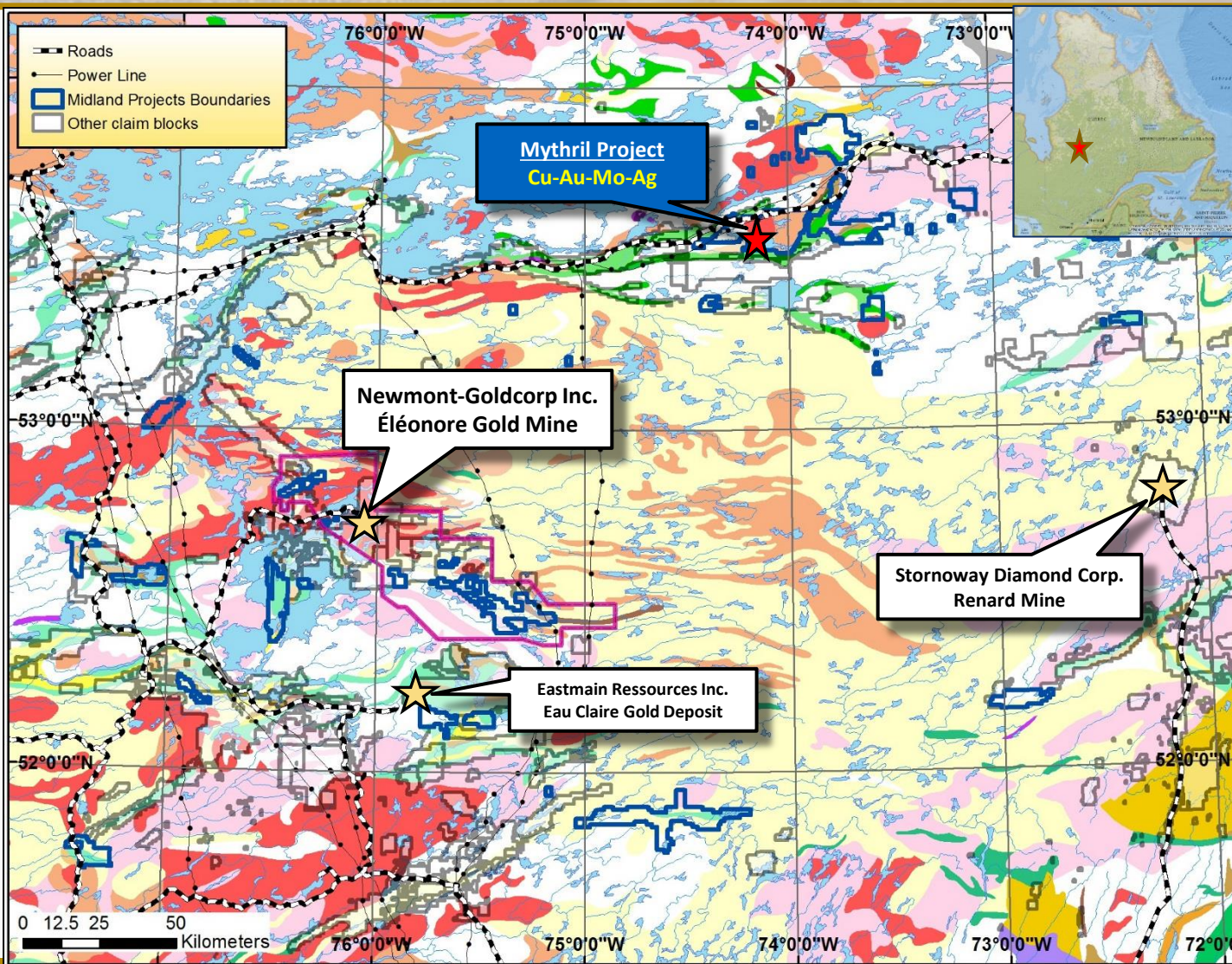
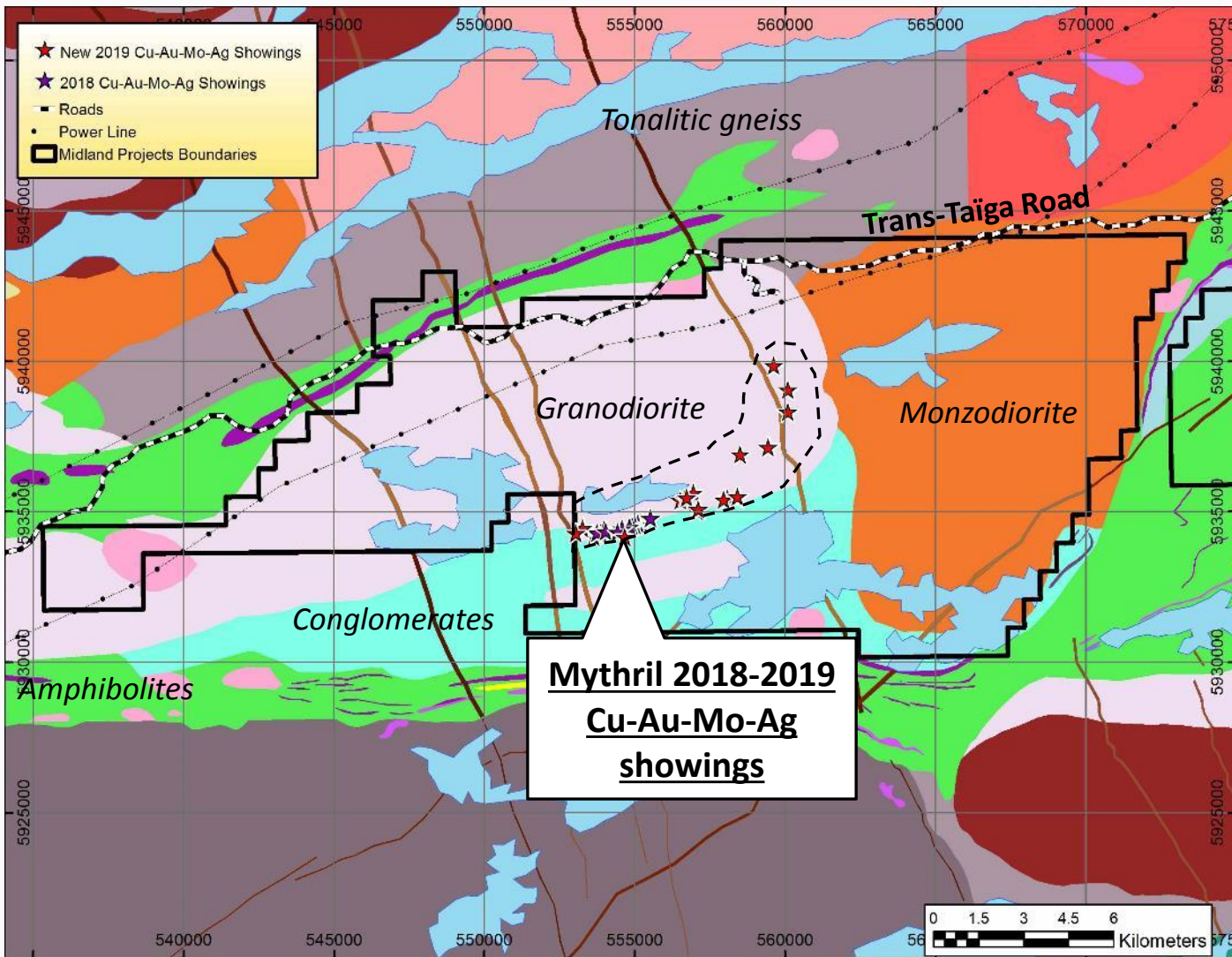
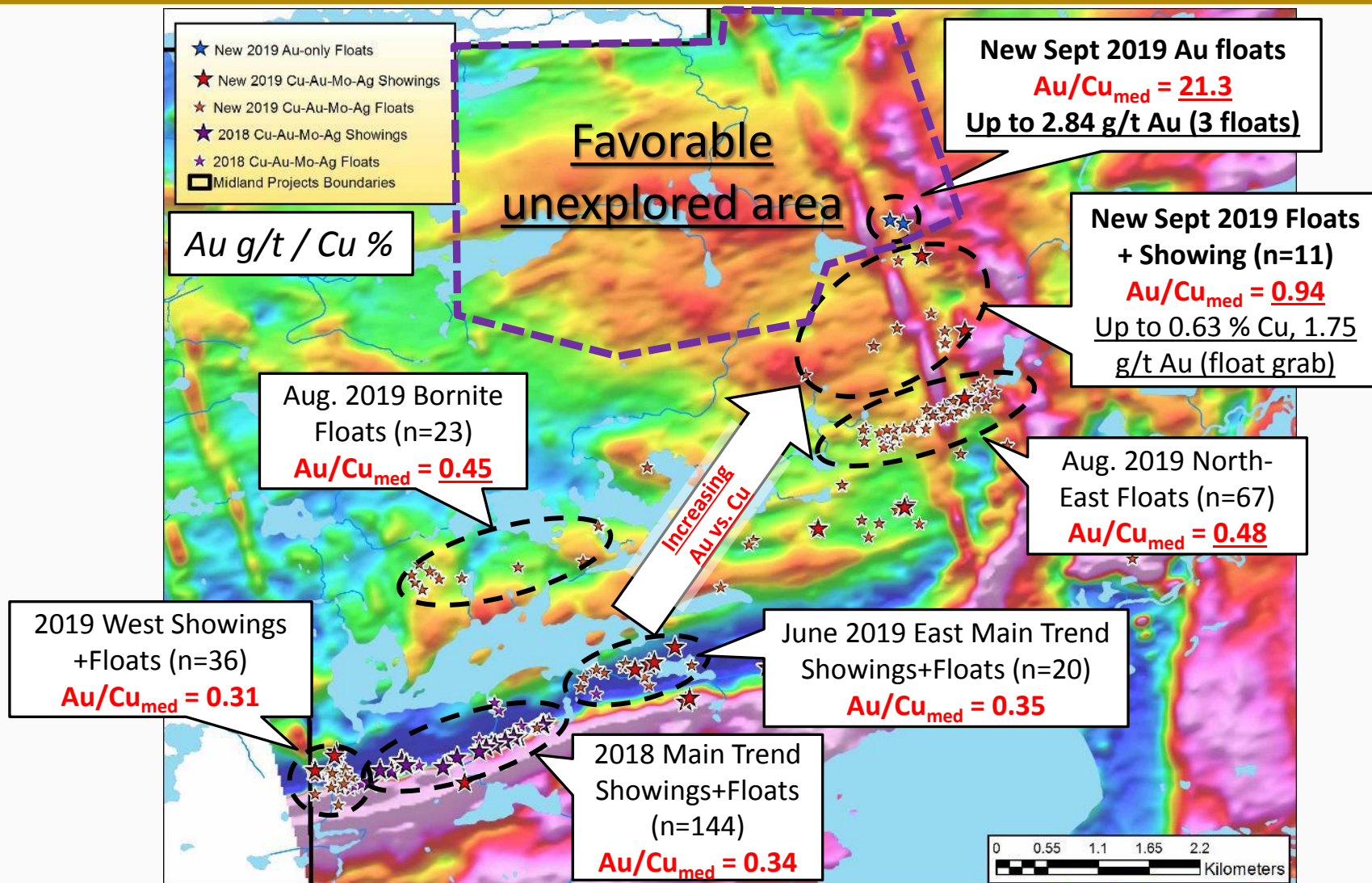


# Midland Myhril Discovery Location







# Mythril – Gold-bearing floats

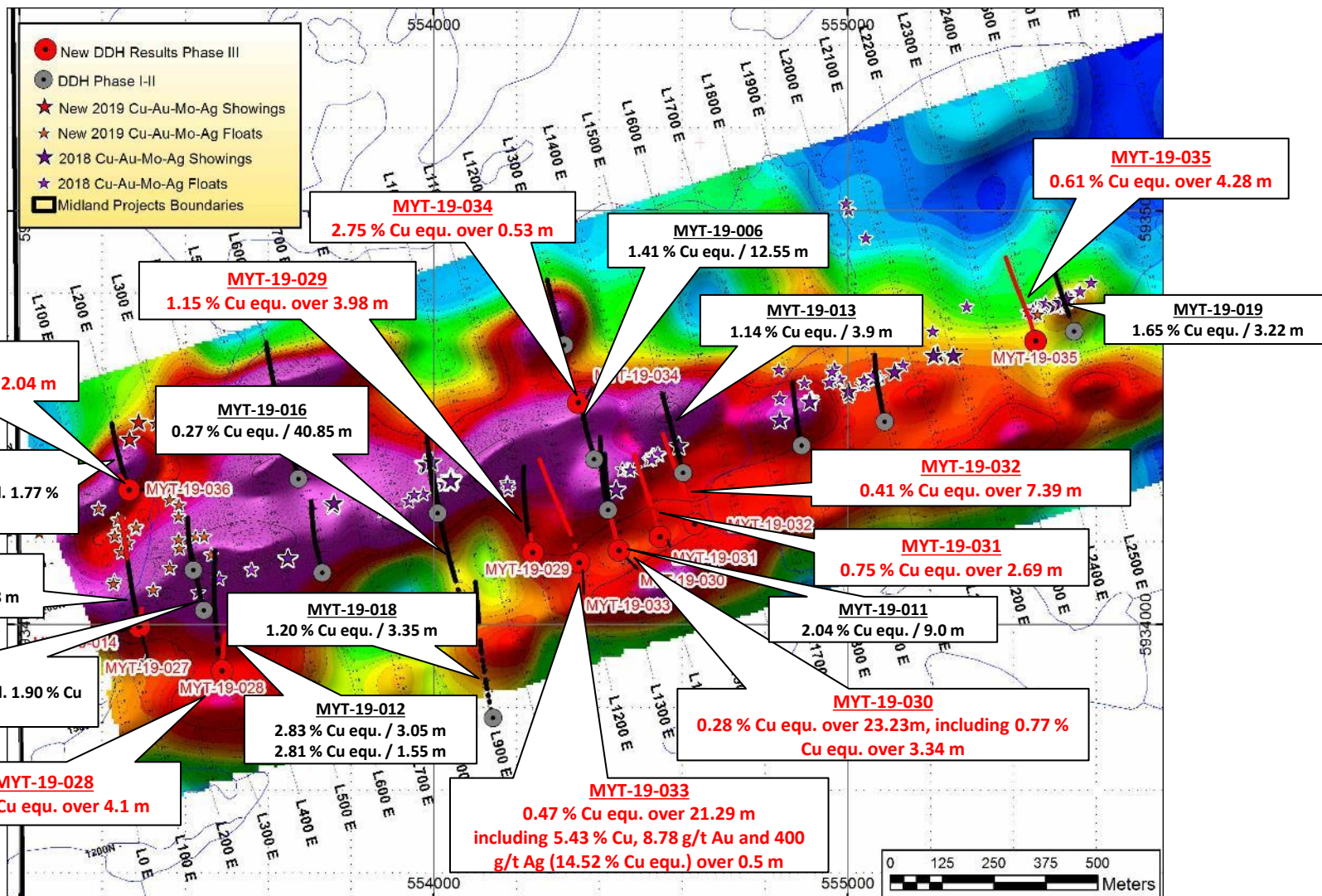


*S410469 (float)  
Granodiorite with bands altered in  
biotite and mineralized in trace  
magnetite and chalcopyrite  
2.83 g/t Au, 0.13 % Cu, 15.2 g/t Ag*

*S410492 (float)  
Granodiorite with granite dykes, quartz  
veinlets, biotite alteration and 1% pyrite  
2.84 g/t Au, 0.06 % Cu, 2.0 g/t Ag*



# Mythril DDH Phase I to III – Best results



# DDH MYT-19-027 to 036, 14-EXT – Results #1

DDH MYT-19-	Section	From m	To m	Width m**	Cu % Equ*	Cu %	Au g/t	Mo %	Ag ppm
027	150E	nsv							
028	300E	249.87	250.39	0.52	1.17	0.93	0.32	0.001	2.8
		274.75	315	40.25	0.20	0.17	0.03	0.0007	1.1
<b>incl.</b>		<b>274.75</b>	<b>278.85</b>	<b>4.10</b>	<b>0.69</b>	<b>0.56</b>	<b>0.12</b>	<b>0.004</b>	<b>4.1</b>
029	1100E	134.0	329.9	195.9	0.11	0.06	0.01	0.009	0.4
<i>incl.</i>		<b>146.69</b>	<b>150.67</b>	<b>3.98</b>	<b>1.15</b>	<b>0.91</b>	<b>0.21</b>	<b>0.01</b>	<b>6.6</b>
<i>incl.</i>		178.3	178.83	0.53	2.11	1.28	0.21	0.15	12.4
<i>incl.</i>		224.69	225.3	0.61	1.50	1.18	0.13	0.05	6.5
030	1300E	151.61	324	172.39	0.11	0.08	0.02	0.003	0.6
<i>incl.</i>		151.61	174.84	23.23	0.28	0.18	0.07	0.01	1.4
<i>incl.</i>		151.61	152.13	0.52	1.21	0.47	1.01	0.005	5.5
<b>incl.</b>		<b>160.95</b>	<b>164.29</b>	<b>3.34</b>	<b>0.77</b>	<b>0.58</b>	<b>0.08</b>	<b>0.03</b>	<b>4.0</b>
<i>incl.</i>		174.34	174.84	0.5	4.68	3.22	1.70	0.03	26.2
<i>incl.</i>		215.0	216.0	1.0	1.02	0.88	0.08	0.008	6.7
031	1400E	137.47	138.16	0.69	1.11	0.71	0.37	0.03	4.0
		<b>151.81</b>	<b>154.5</b>	<b>2.69</b>	<b>0.75</b>	<b>0.51</b>	<b>0.27</b>	<b>0.006</b>	<b>4.0</b>
		260.5	299.29	38.79	0.13	0.11	0.009	0.001	0.42
032	1500E	264.36	264.96	0.60	1.62	1.20	0.13	0.07	8.4
		328.48	329.06	0.58	1.04	0.68	0.08	0.07	2.5
		<b>346.61</b>	<b>354</b>	<b>7.39</b>	<b>0.41</b>	<b>0.36</b>	<b>0.03</b>	<b>0.006</b>	<b>1.2</b>

\*Metal prices used for Cu Eq calculation: Au \$1285/oz, Cu \$2.77/lb, Ag \$15/oz, Mo \$10.9/lb. 100% recovery assumed.

nsv: no significant value.

\*\*True thicknesses reported in drill holes cannot be determined with available information

# DDH MYT-19-027 to 036, 14-EXT – Results #2

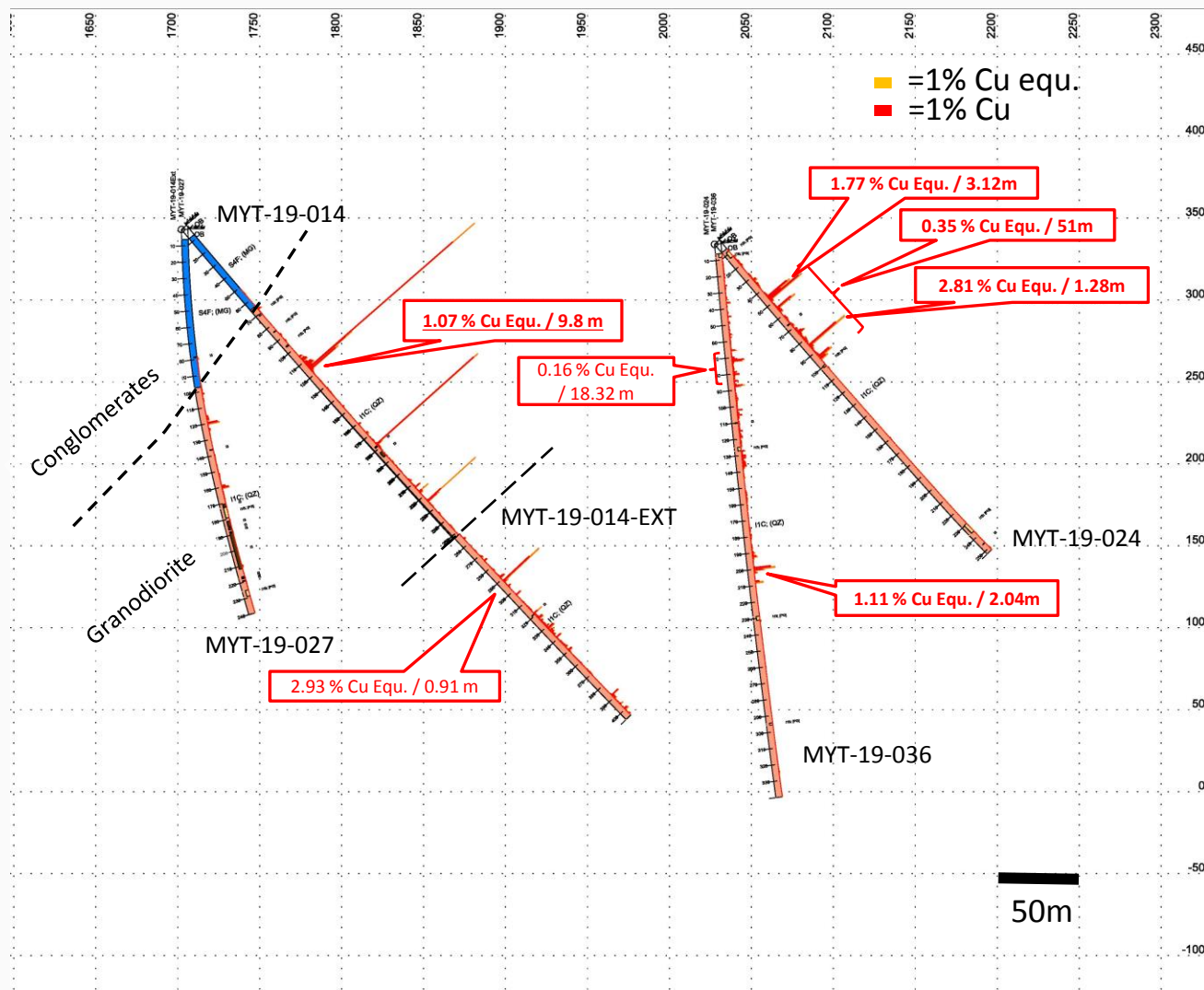
DDH MYT-19-	Section	From m	To m	Width m**	Cu % Equ*	Cu %	Au g/t	Mo %	Ag ppm
033	1200E	168	261.1	93.1	0.20	0.11	0.06	0.006	2.7
	<i>incl.</i>	168.0	168.53	0.53	1.85	1.35	0.53	0.02	10.6
	<i>incl.</i>	172.66	173.18	0.52	1.11	0.68	0.40	0.03	7.2
	<i>incl.</i>	199.5	200	0.5	1.38	1.01	0.11	0.05	15.1
	<i>incl.</i>	<b>223.62</b>	<b>244.91</b>	<b>21.29</b>	<b>0.47</b>	<b>0.24</b>	<b>0.22</b>	<b>0.002</b>	<b>10.1</b>
	<i>incl.</i>	223.62	224.17	0.55	1.42	1.2	0.15	0.01	6.8
	<i>incl.</i>	<b>234.69</b>	<b>235.2</b>	<b>0.51</b>	<b>14.52</b>	<b>5.43</b>	<b>8.78</b>	<b>0.01</b>	<b>400</b>
	<i>incl.</i>	244.39	244.91	0.52	1.28	1.22	0.03	0.003	2.9
		259.7	261.1	1.4	1.45	1.28	0.09	0.02	5.5
034	1300E	89.75	90.28	0.53	2.75	1.52	0.40	0.23	7.9
		240	240.54	0.54	1.17	0.92	0.04	0.05	2.5
		262.86	263.39	0.53	2.65	2.23	0.45	0.003	14
035	2400E	37.1	41.38	4.28	0.61	0.17	0.04	0.11	0.2
	<i>incl.</i>	40.87	41.38	0.51	2.81	0.10	0.02	0.69	0.2
036	200E	69.66	87.98	18.32	0.16	0.14	0.01	0.002	0.4
	<i>incl.</i>	69.66	72.46	2.8	0.40	0.38	0.02	0.001	0.7
		<b>198.77</b>	<b>200.81</b>	<b>2.04</b>	<b>1.11</b>	<b>0.89</b>	<b>0.13</b>	<b>0.03</b>	<b>3.8</b>
014-EXT	150E	291	291.91	0.91	2.93	2.18	1.01	0.002	8.2

\*Metal prices used for Cu Eq calculation: Au \$1285/oz, Cu \$2.77/lb, Ag \$15/oz, Mo \$10.9/lb. 100% recovery assumed

nsv: no significant value.

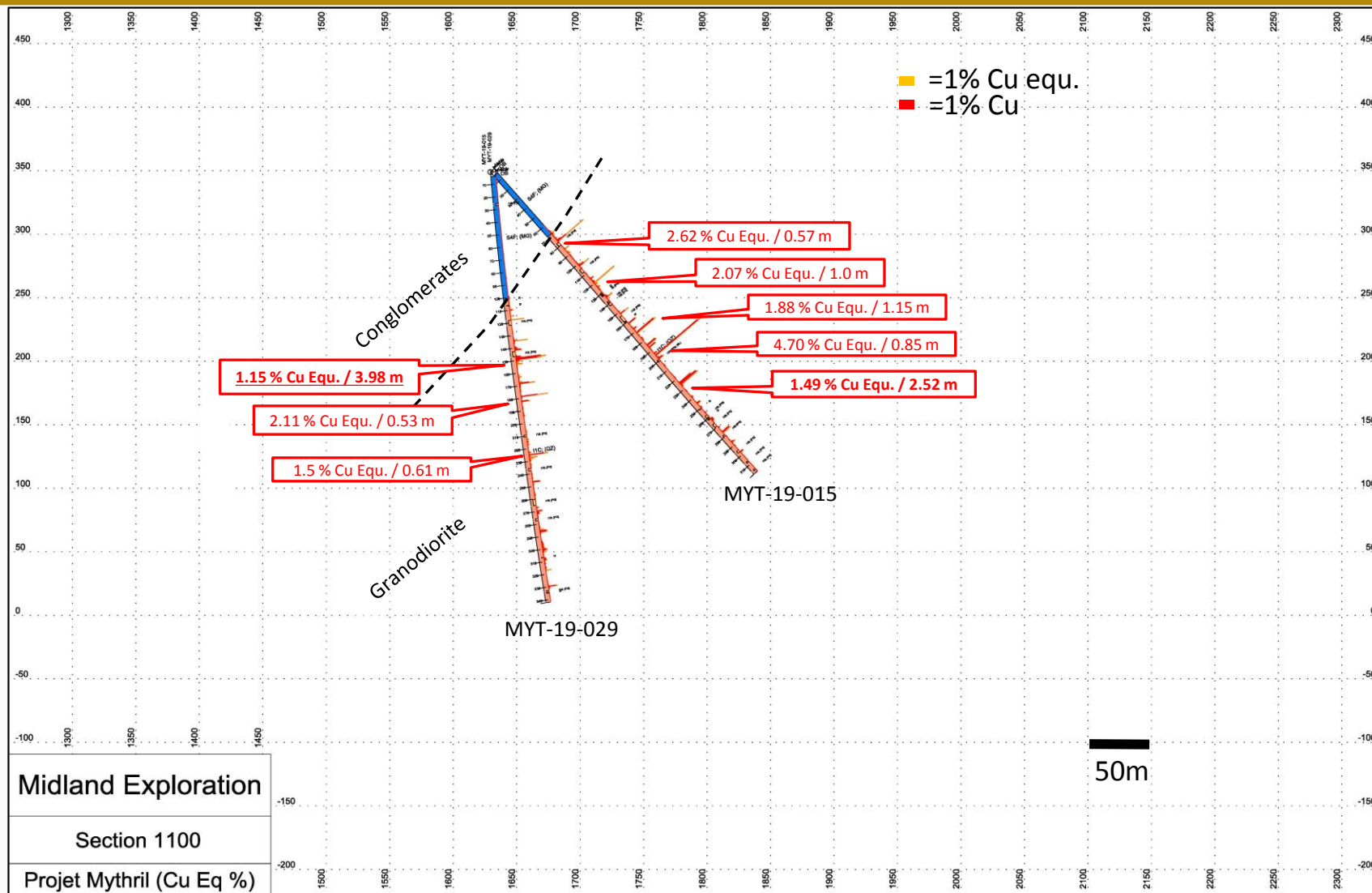
\*\*True thicknesses reported in drill holes cannot be determined with available information

# Section 150-200E

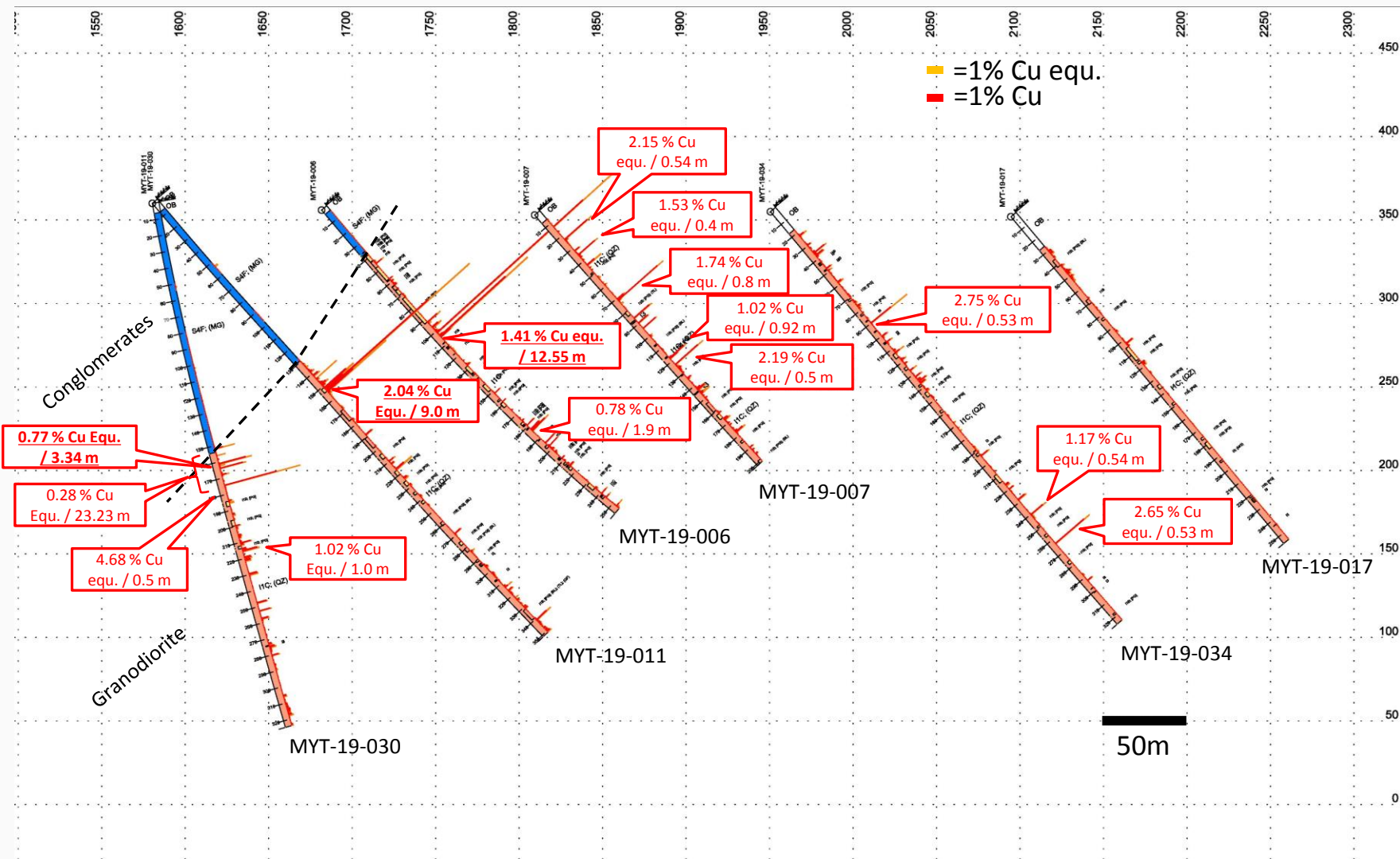




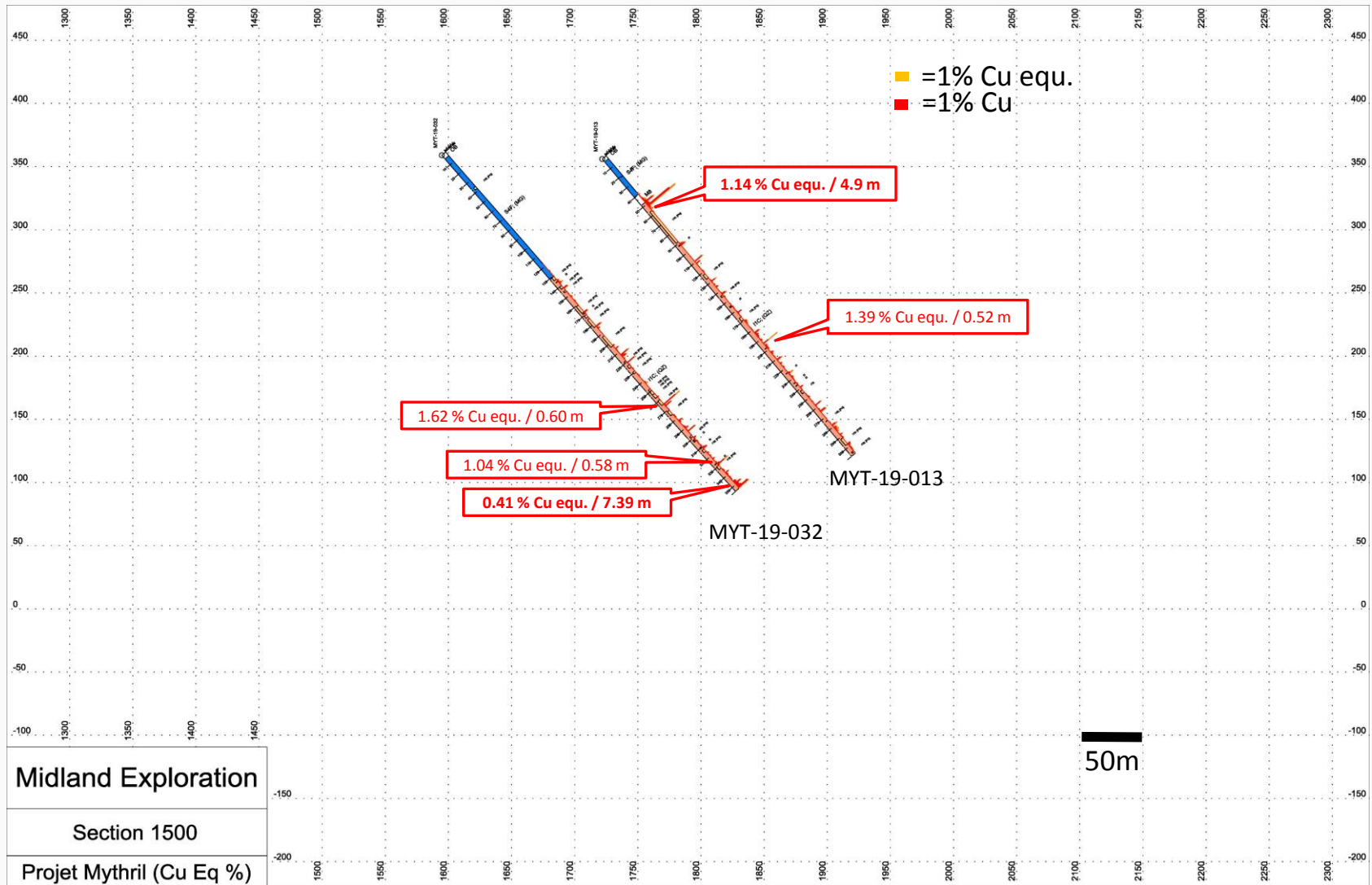
# Section 1100E



# Section 1300E

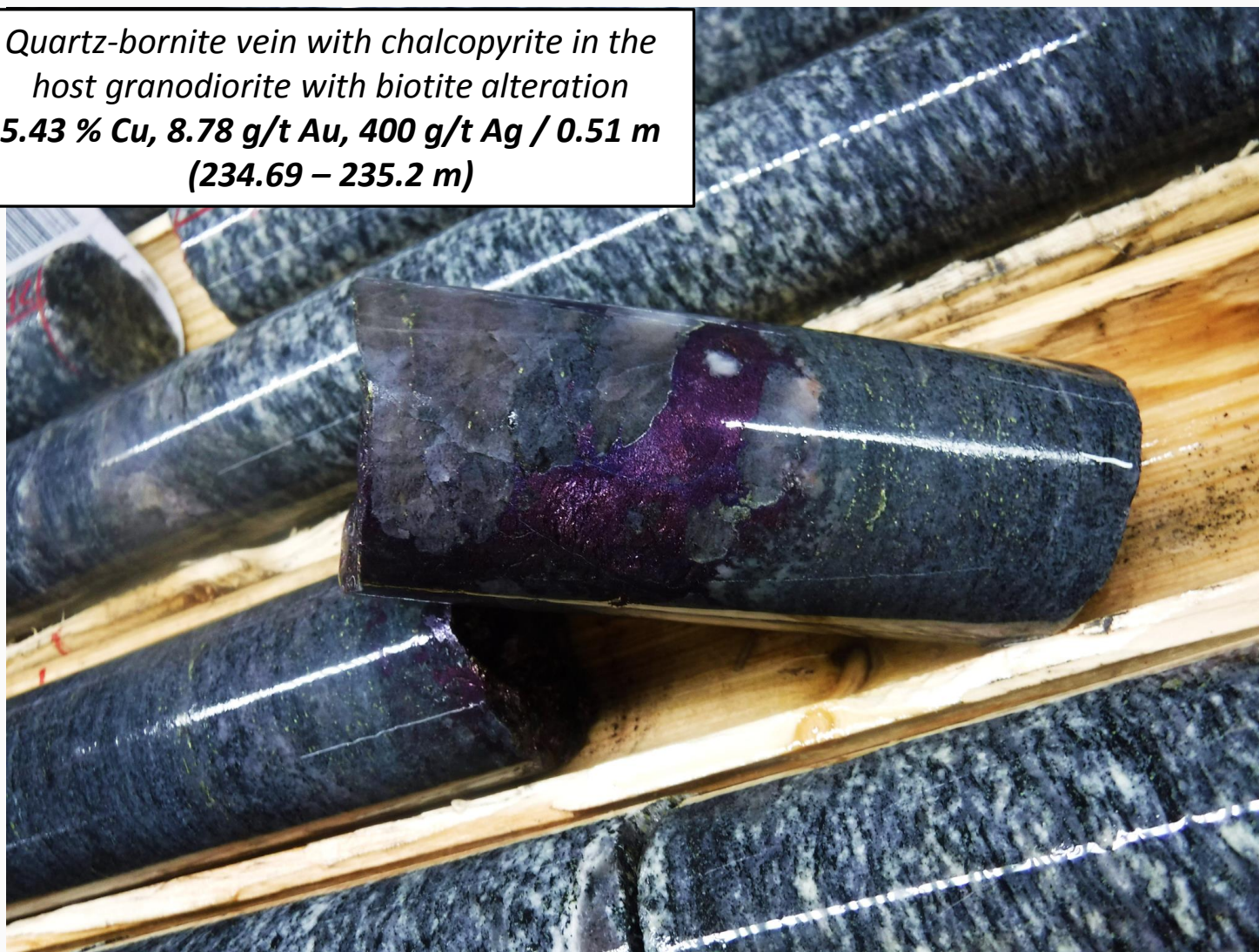


# Section 1500E



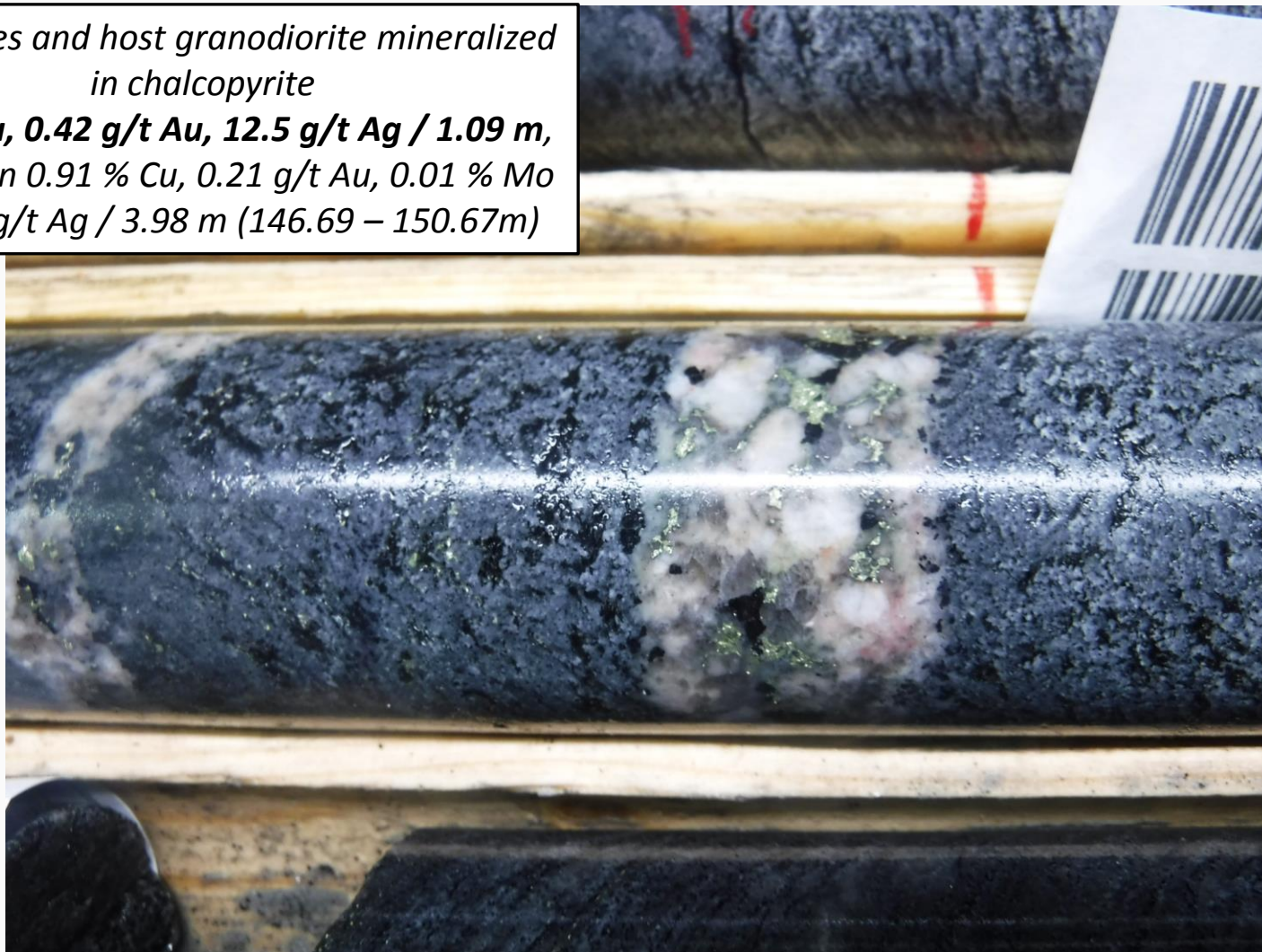
# Mineralization MYT-19-033

*Quartz-bornite vein with chalcopyrite in the  
host granodiorite with biotite alteration  
**5.43 % Cu, 8.78 g/t Au, 400 g/t Ag / 0.51 m**  
**(234.69 – 235.2 m)***



*Pegmatites and host granodiorite mineralized  
in chalcopyrite*

**1.94 % Cu, 0.42 g/t Au, 12.5 g/t Ag / 1.09 m,**  
*included in 0.91 % Cu, 0.21 g/t Au, 0.01 % Mo  
and 6.5 g/t Ag / 3.98 m (146.69 – 150.67m)*



# Mineralization MYT-19-030

*Semi-massive chalcopyrite in granodiorite*  
**3.22 % Cu, 1.70 g/t Au, 0.03 % Mo and 26 g/t**  
**Ag / 0.5 m (174.34 – 174.84 m)**



# DDH information

DDH	UTM East	UTM North	Elevation	Direction	Dip	Depth
MYT-19-027	553290	5933995	343	345	-89	240
MYT-19-028	553490	5933888	358	345	-85	411
MYT-19-029	554240	5934174	349	345	-85	342
MYT-19-030	554448	5934179	360	345	-80	324
MYT-19-031	554547	5934212	363	345	-50	324
MYT-19-032	554631	5934243	359	345	-50	354
MYT-19-033	554352	5934150	352	345	-50	408
MYT-19-034	554350	5934536	355	345	-50	324
MYT-19-035	555454	5934685	359	345	-50	330
MYT-19-036	553265	5934325	334	345	-85	340