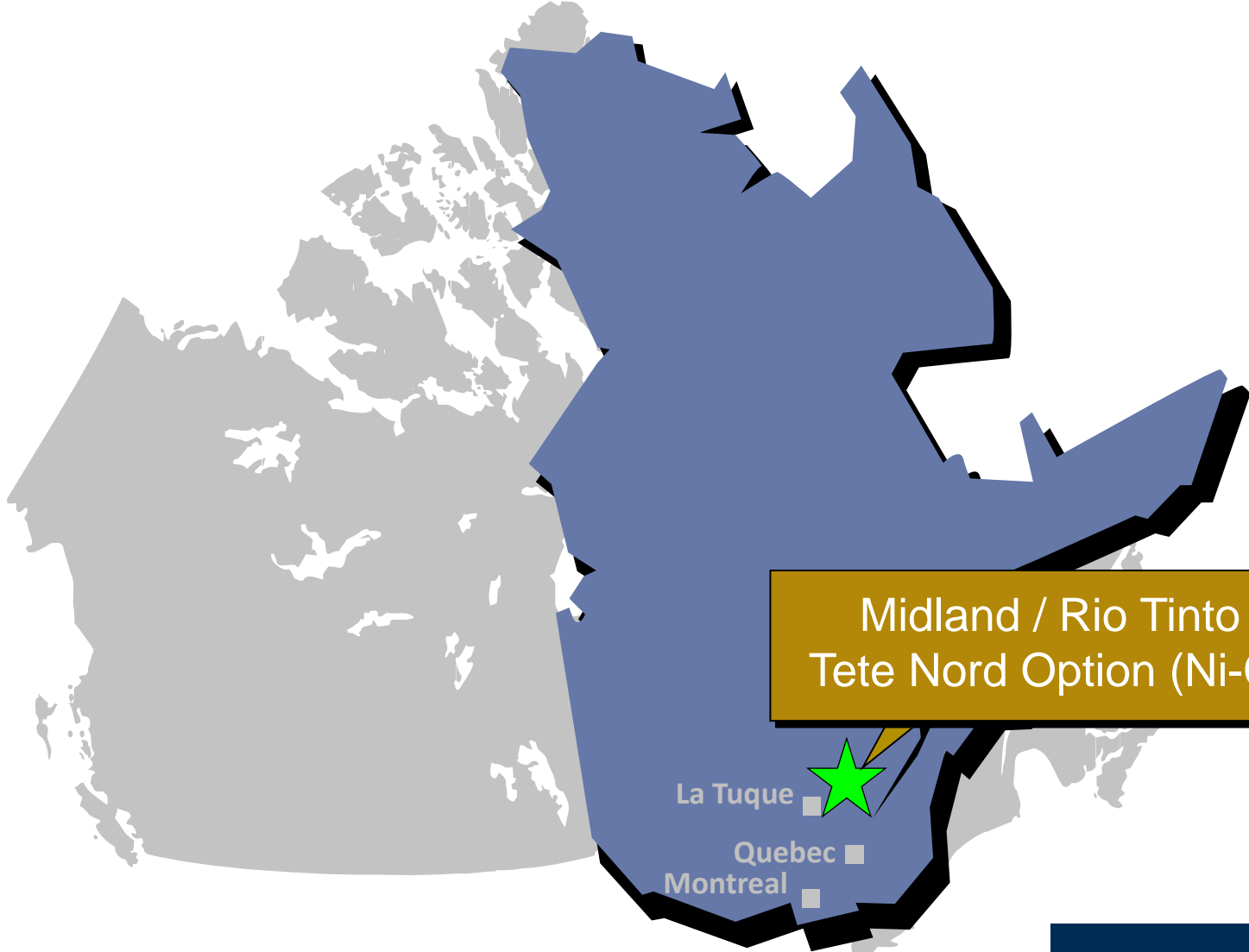


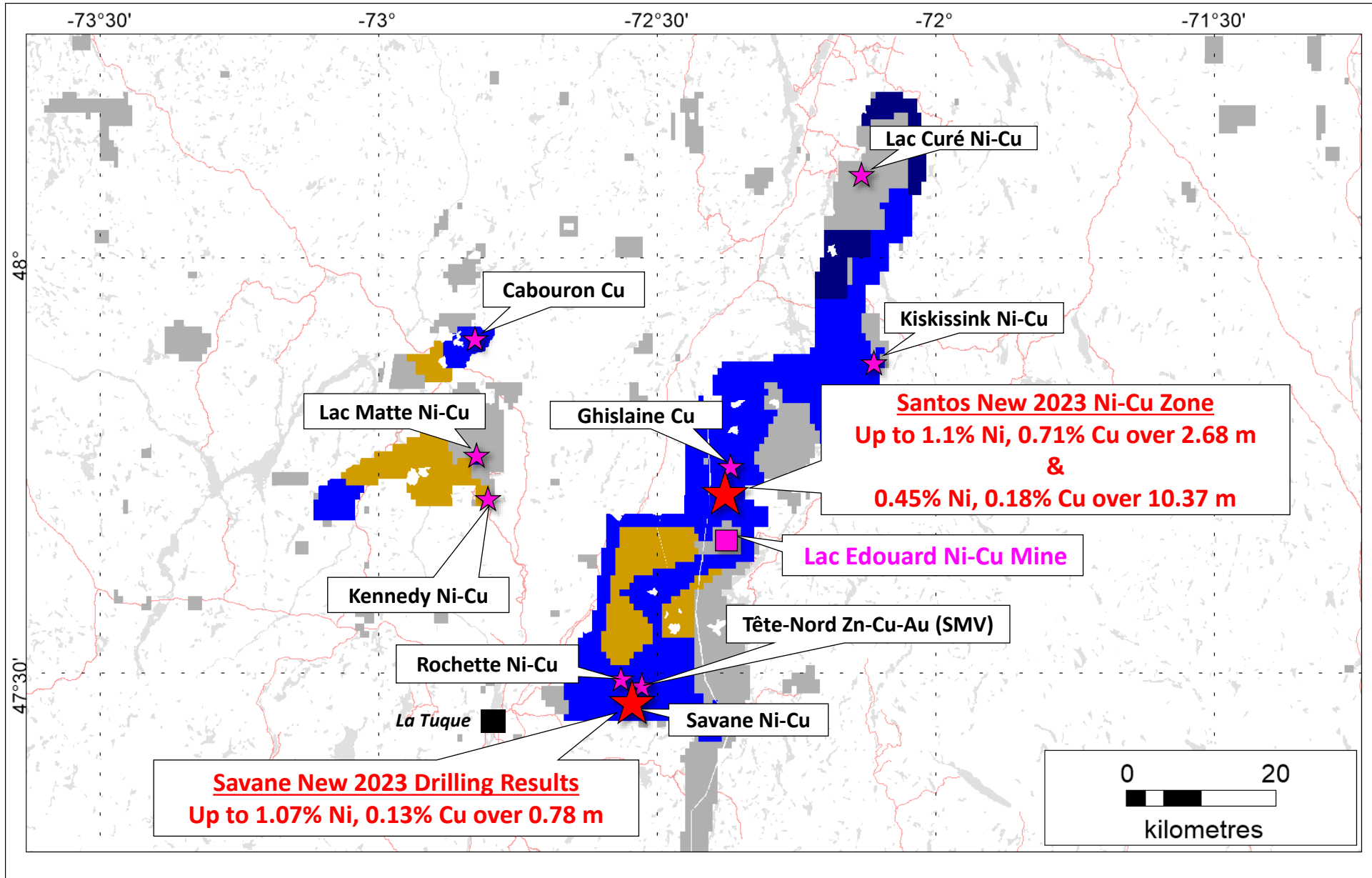
Midland / Rio Tinto Tête-Nord Location



Midland / Rio Tinto
Tete Nord Option (Ni-Cu)

La Tuque
Quebec
Montreal

Tête-Nord Project – Santos Location



Santos Ni-Cu Zone – Mineralized Samples



21m



42m



31m



58m

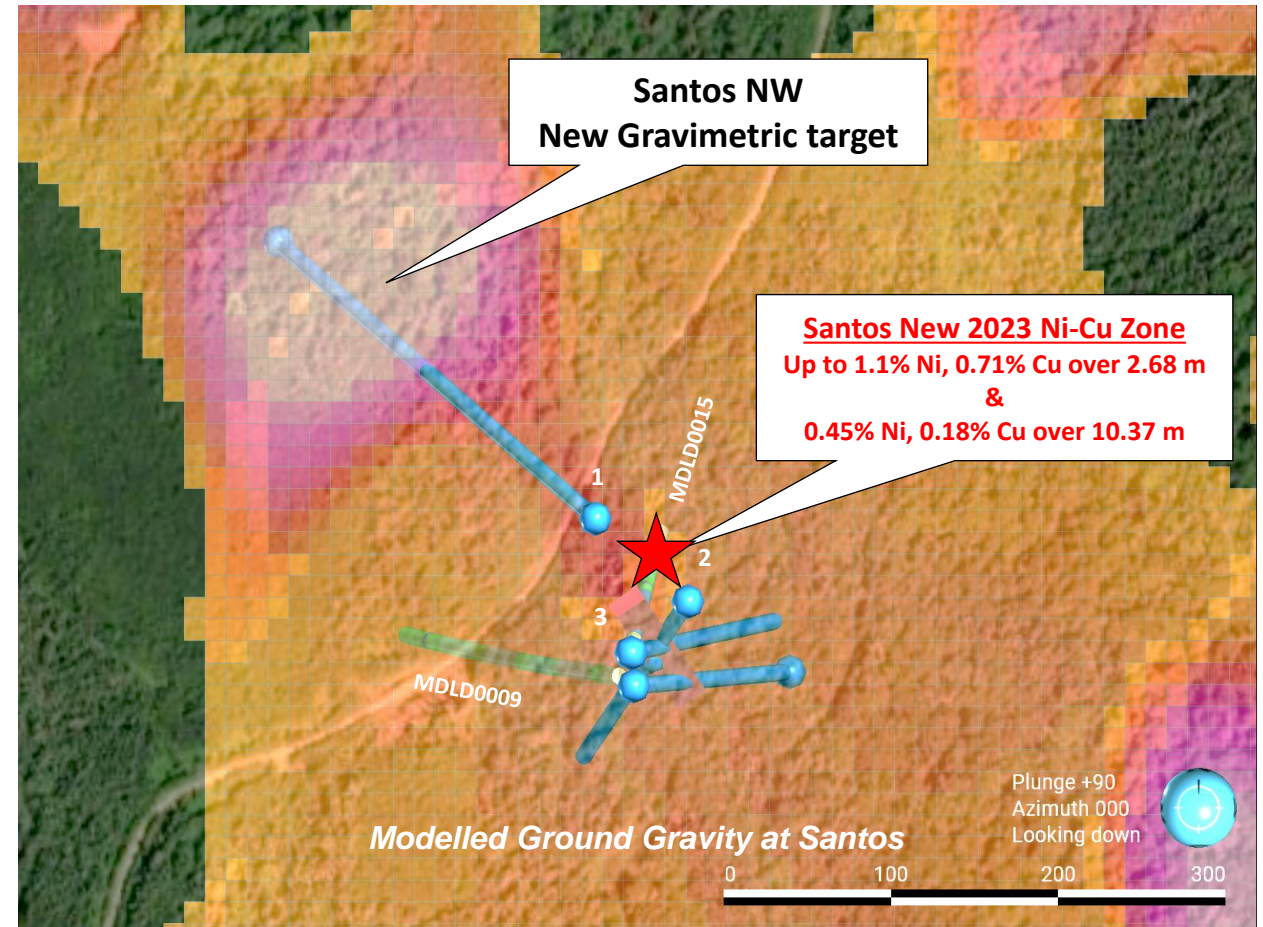
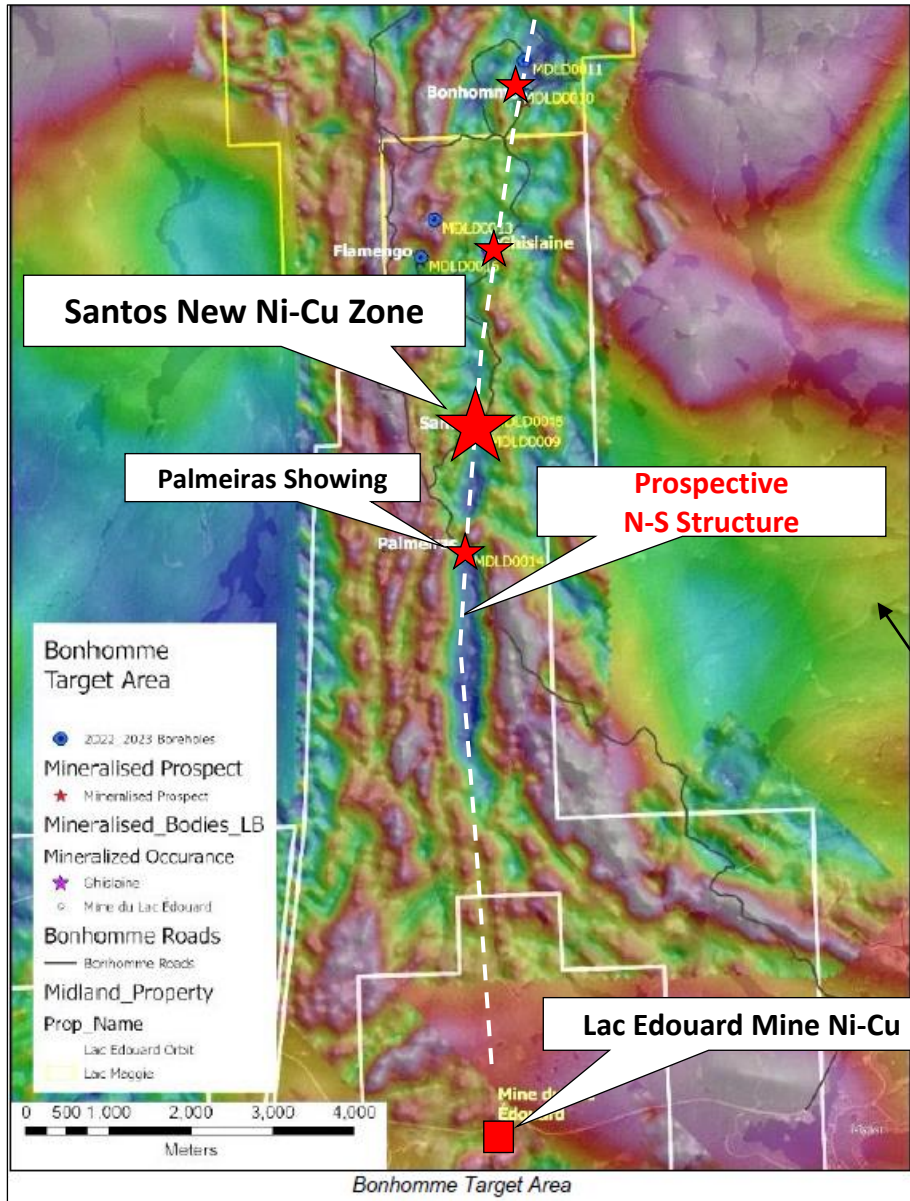


37m



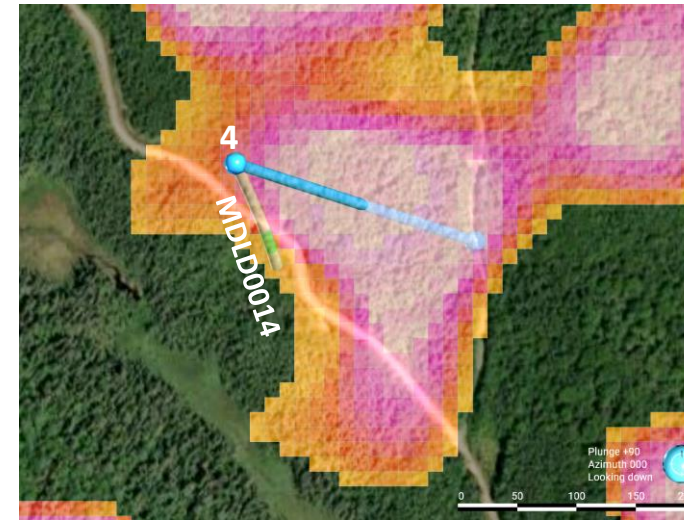
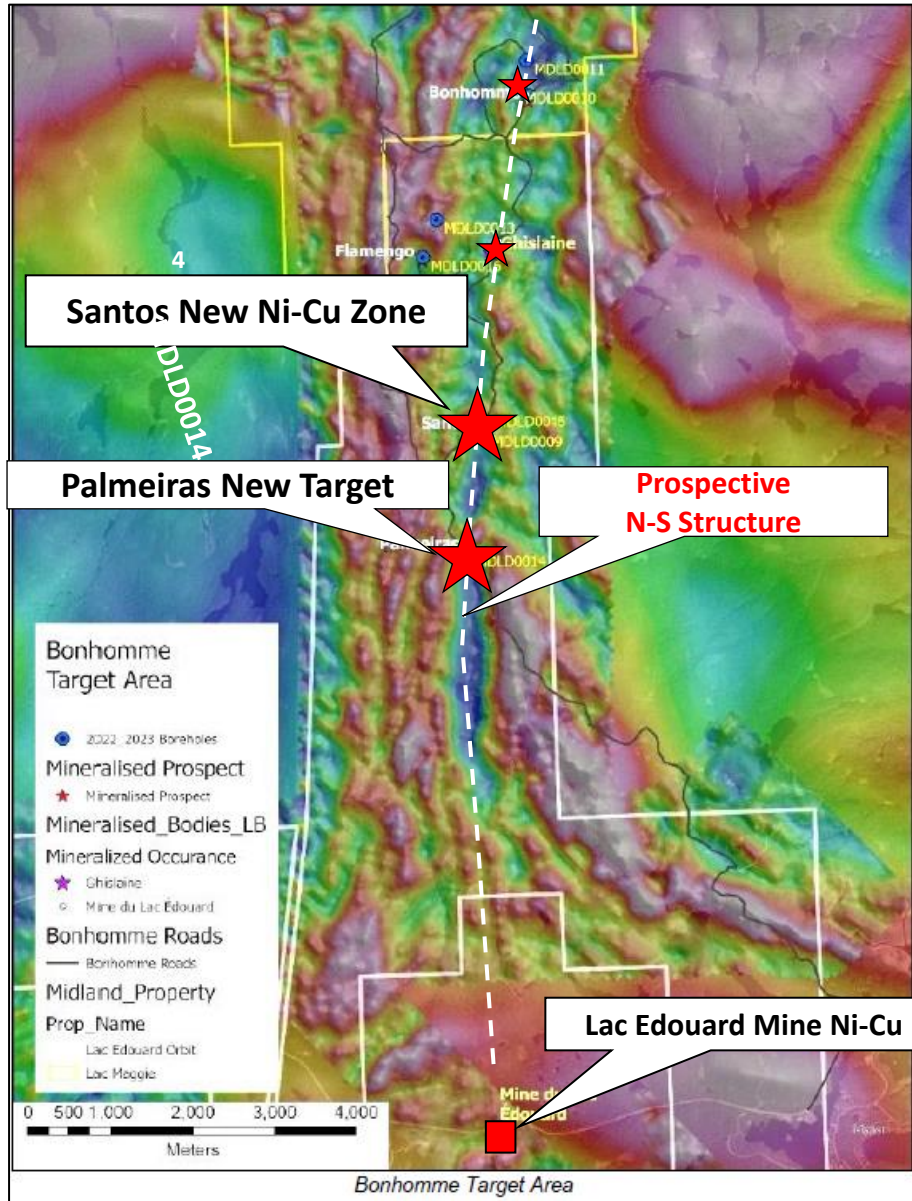
69m

Santos New Drilling Targets

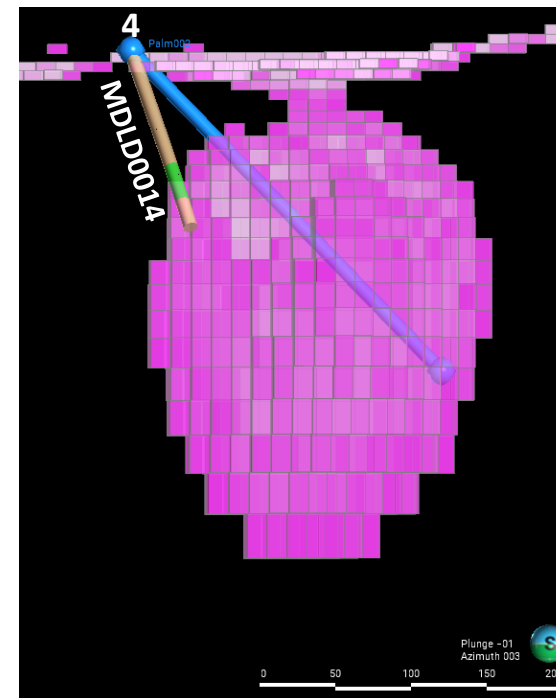


Modelled ground gravity data showing the Santos occurrence and a new gravity target to the NW. Boreholes that will be drilled in July are labeled 1, 2 and 3.

Palmeiras New Drilling Target



Modelled gravity data showing the gravity target identified near the Palmeiras mineralised outcrop. The planned borehole for late July is labeled # 4.

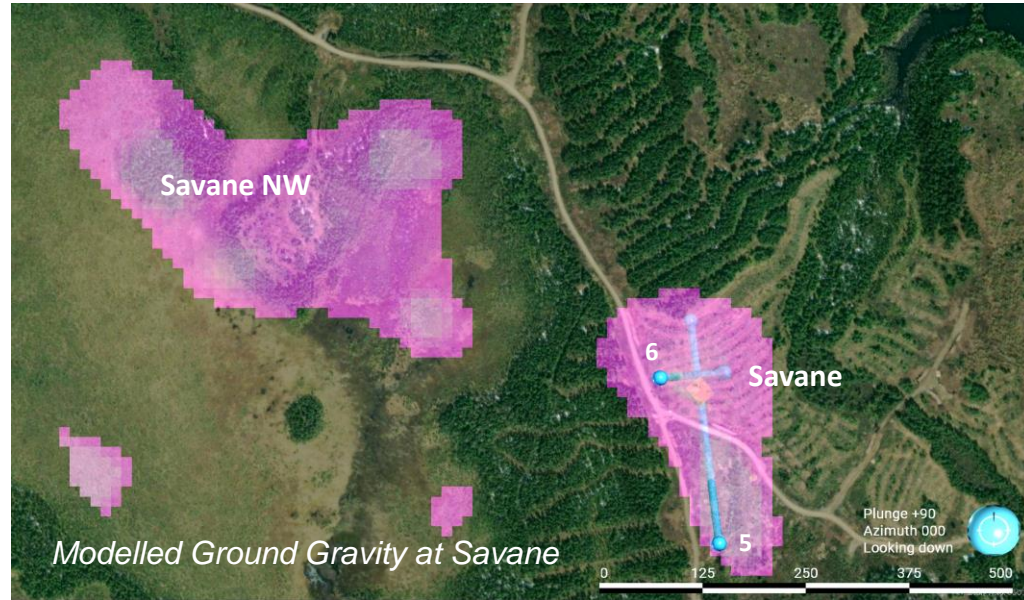


Gravity inversion of the target adjacent to Palmeiras filtered to show the most intense gravity response. The figure also shows the planned borehole (blue) designed to test the target.

Savane New Drilling Targets

Savane – Ground gravity model

Below: LeapFrog 3D model of the gravity inversions as Savane. The three existing boreholes are shown with two planned boreholes labeled 5 and 6.



Above: Plan map of the modeled gravity targets at Savane and Savane NW. New boreholes that will be drilled in late July and August. Traces are labeled 5 and 6.

