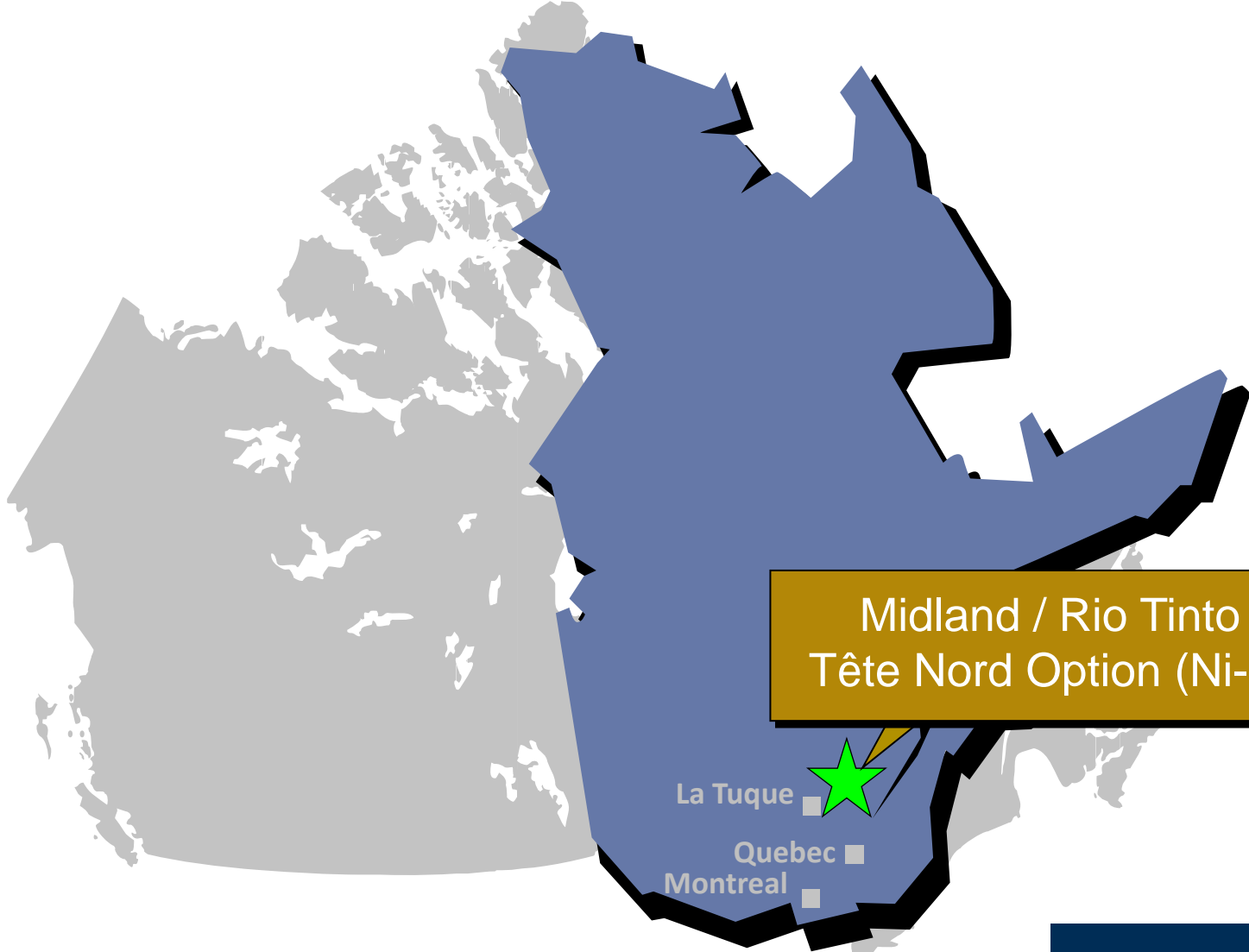


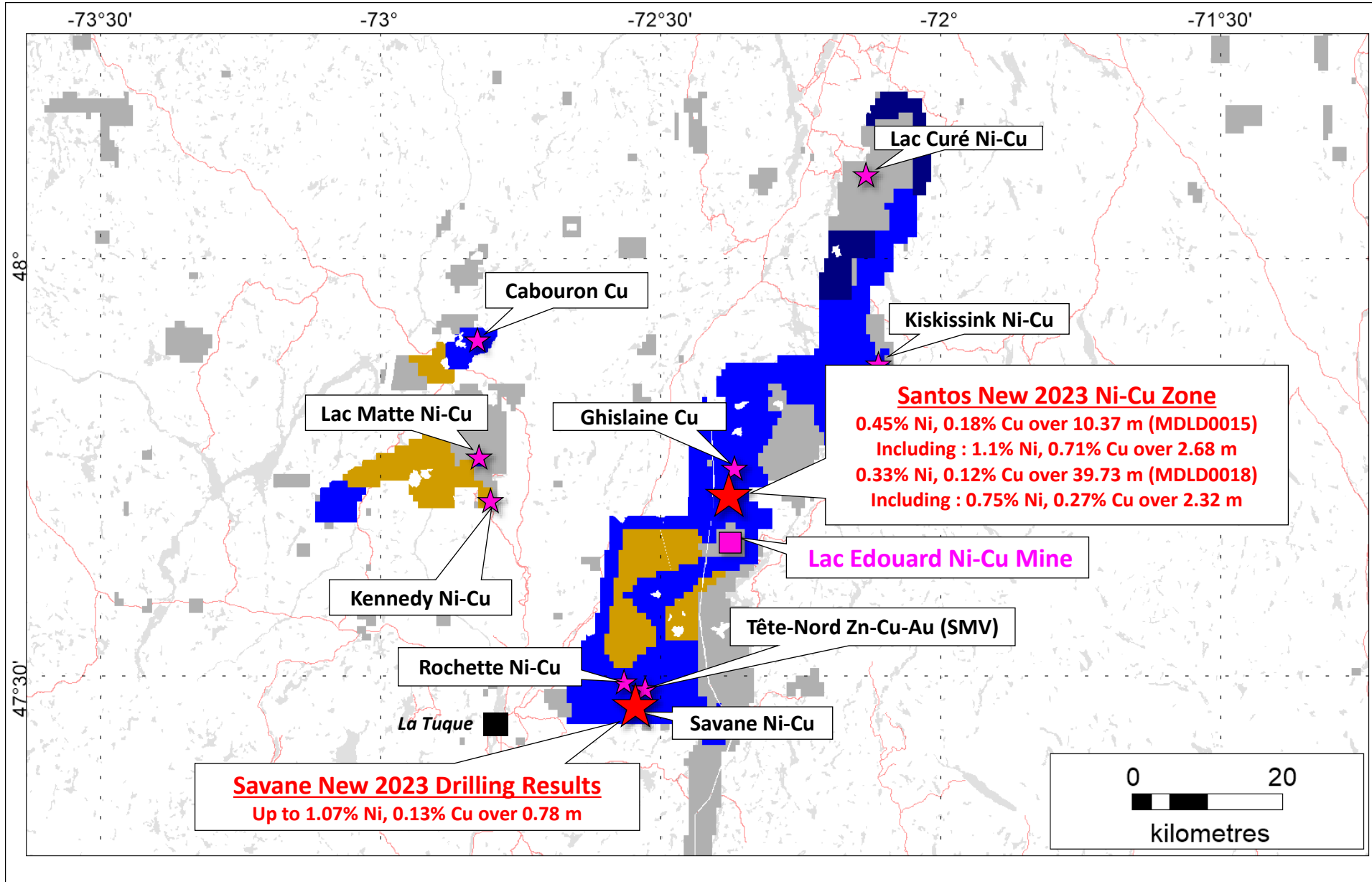
Midland / Rio Tinto Tête Nord Location



Midland / Rio Tinto
Tête Nord Option (Ni-Cu)

La Tuque
Quebec
Montreal

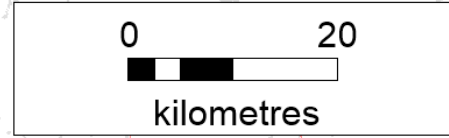
Tête-Nord Project – Santos Location



- Midland/Rio Tinto Option
- Midland 100%
- Rio Tinto 100%
- Other claims
- Main showings
- Mine (closed)

Santos New 2023 Ni-Cu Zone
 0.45% Ni, 0.18% Cu over 10.37 m (MDLD0015)
 Including : 1.1% Ni, 0.71% Cu over 2.68 m
 0.33% Ni, 0.12% Cu over 39.73 m (MDLD0018)
 Including : 0.75% Ni, 0.27% Cu over 2.32 m

Savane New 2023 Drilling Results
 Up to 1.07% Ni, 0.13% Cu over 0.78 m



Santos Ni-Cu Zone ; DDH MDLD0018



RioTinto

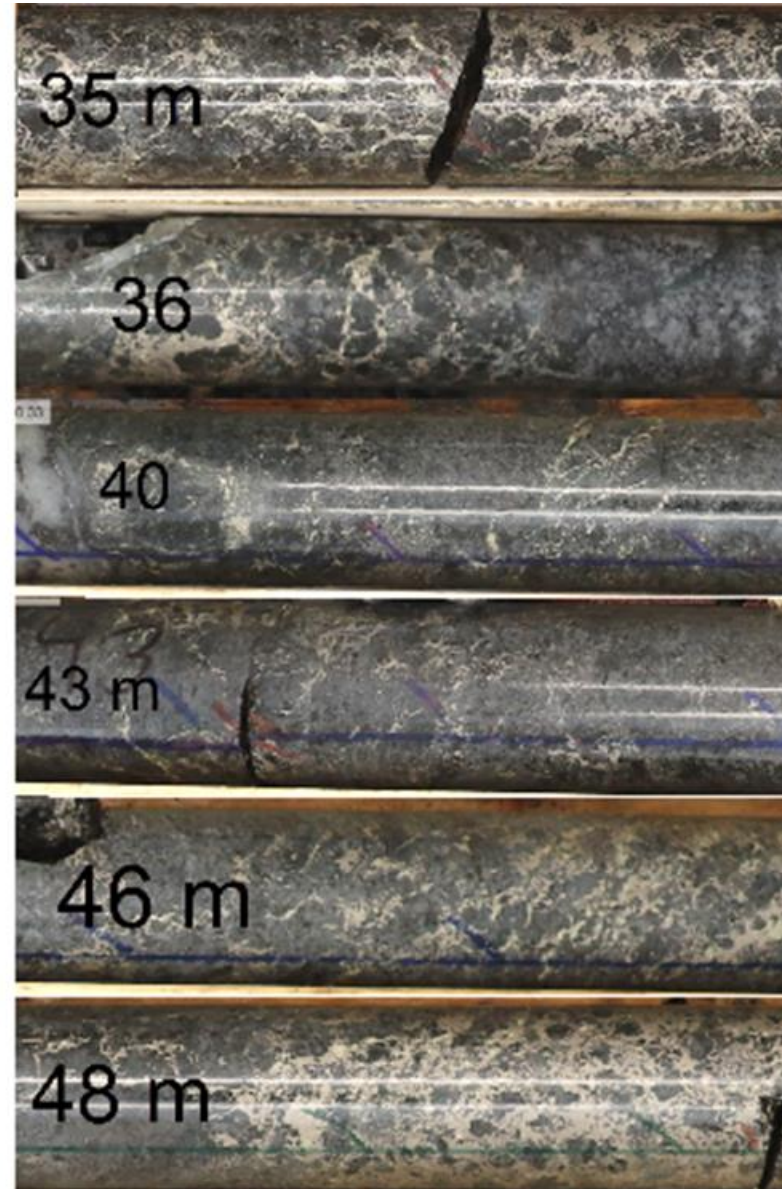
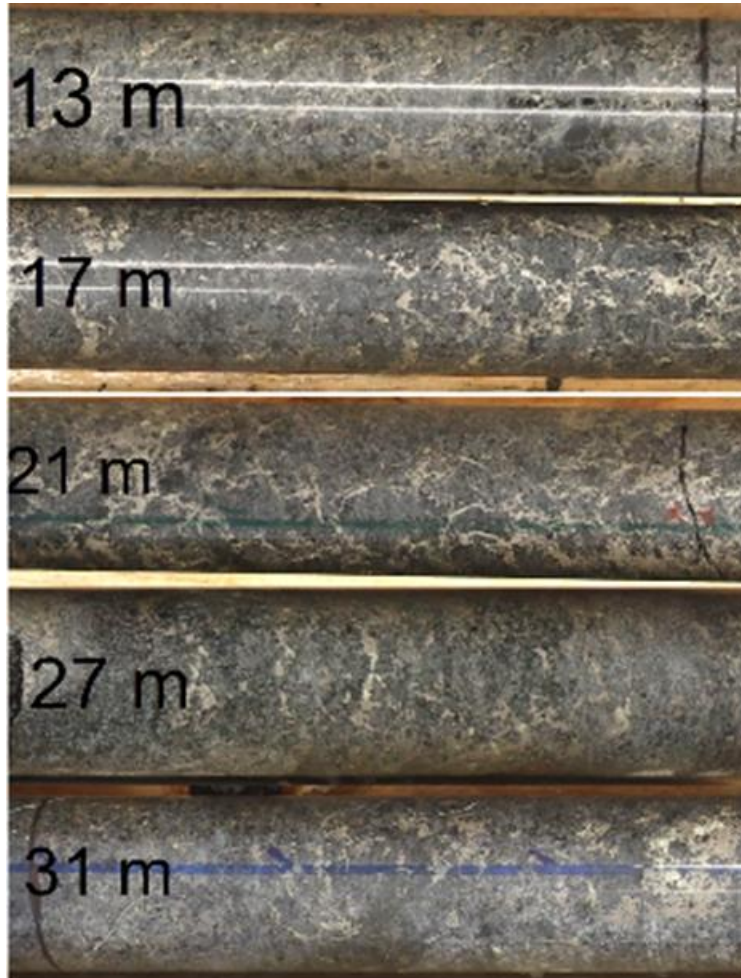


35 m



48 m

Santos Ni-Cu Zone ; DDH MDLD0018



Santos Ni-Cu Zone ; DDH MDLD0015



21m



42m



31m



58m

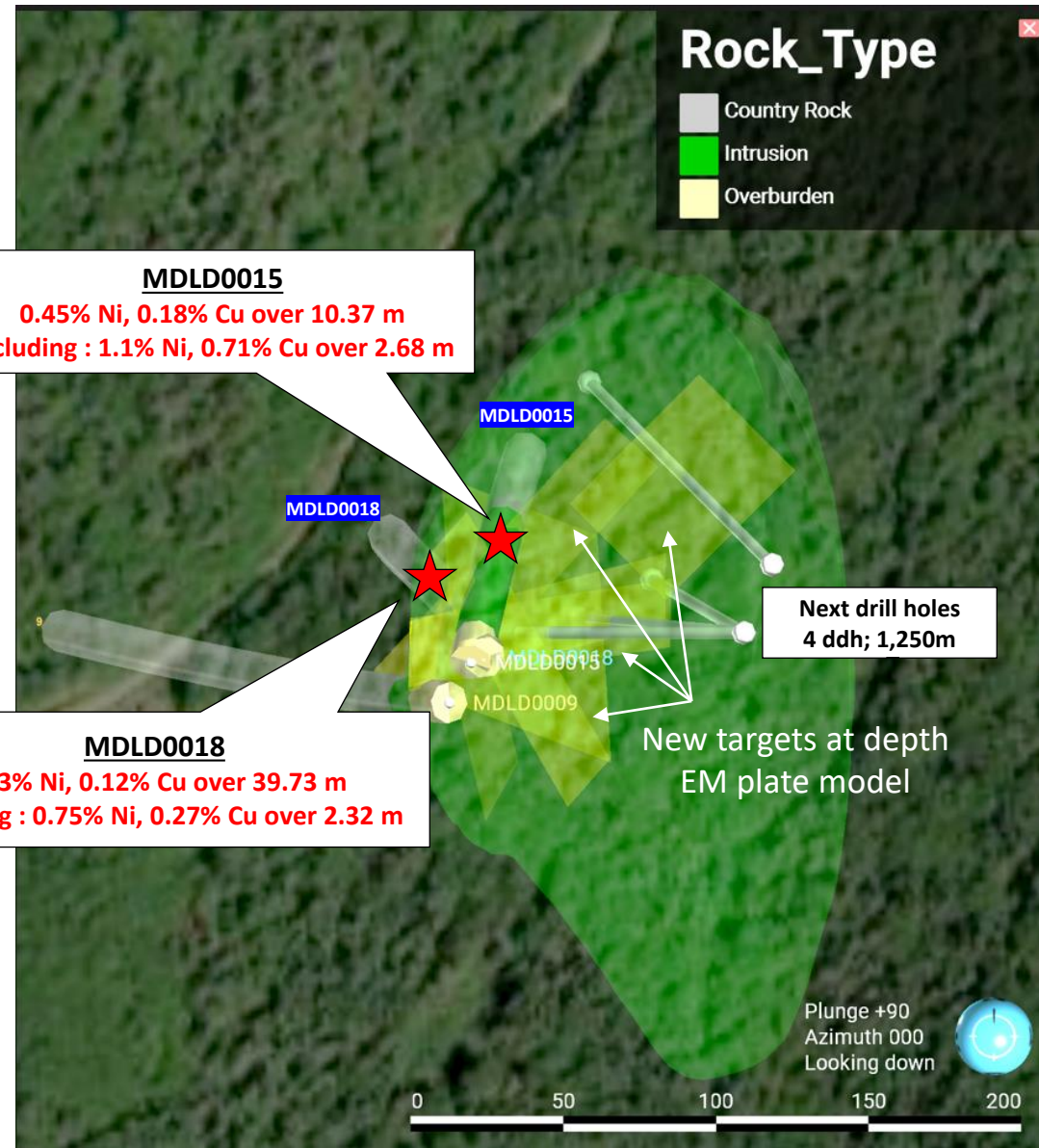
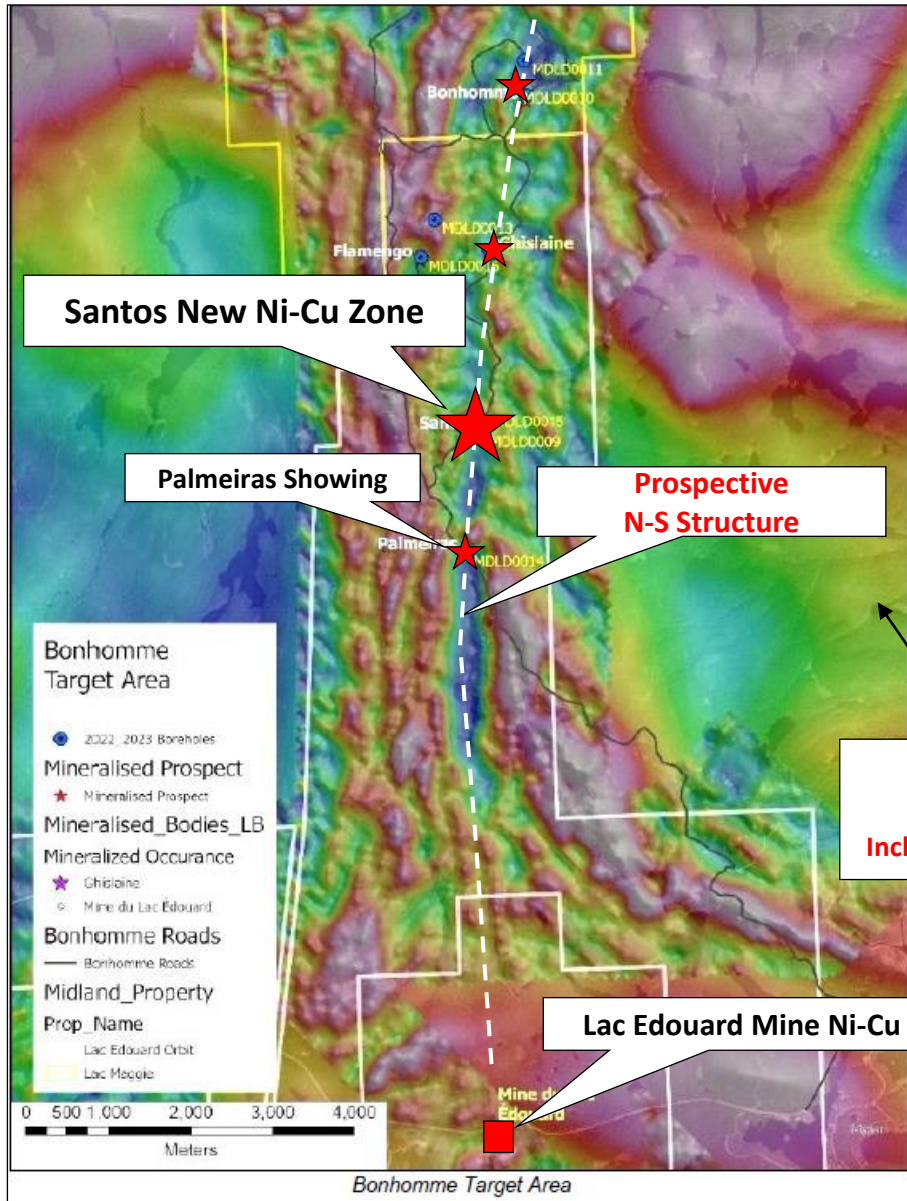


37m

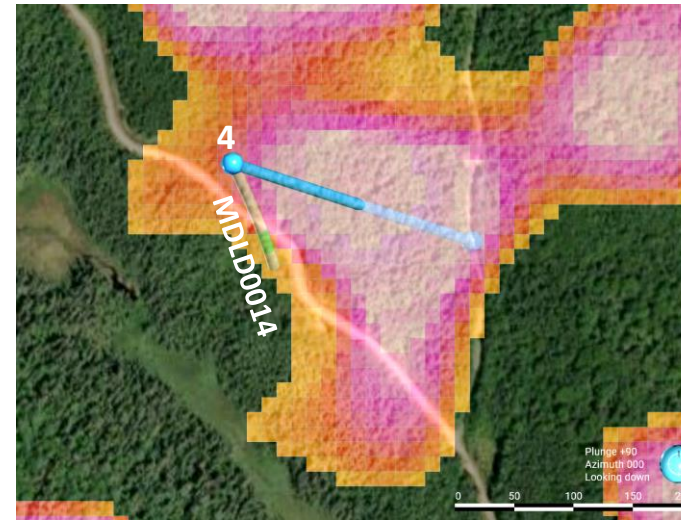
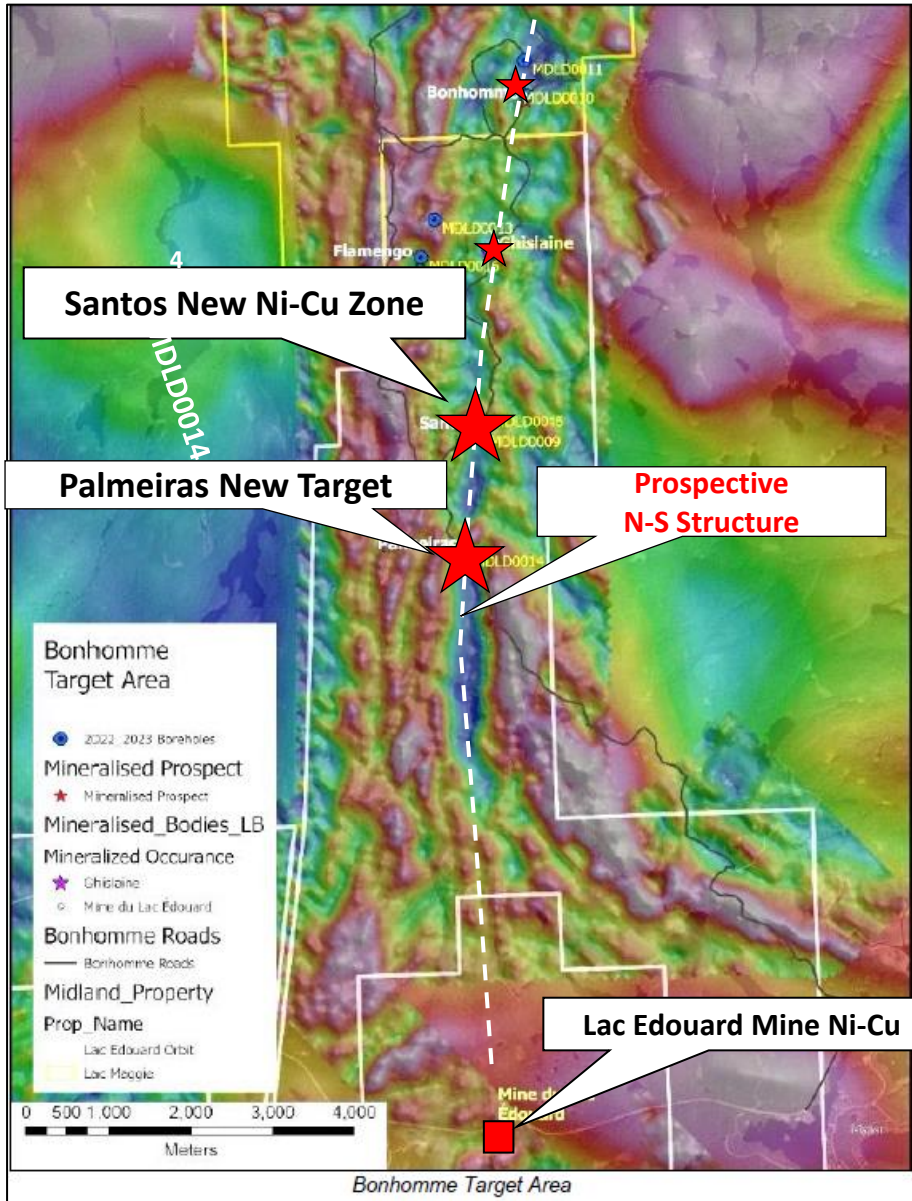


69m

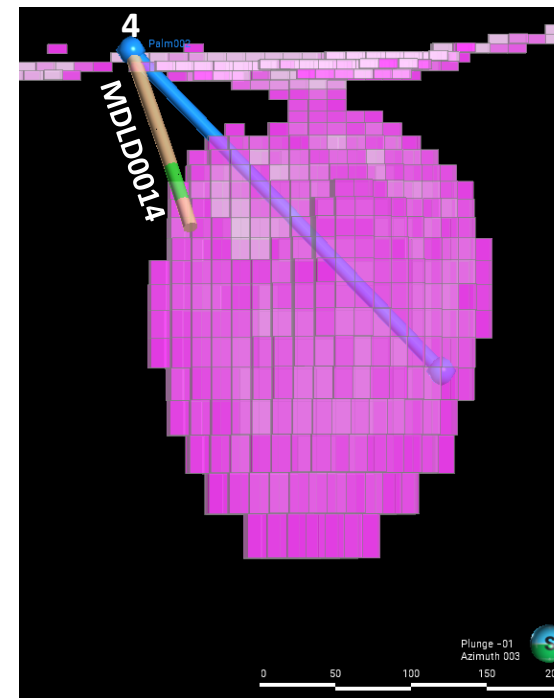
Santos New Drilling Targets



Palmeiras New Drilling Target



Modelled gravity data showing the gravity target identified near the Palmeiras mineralised outcrop. The planned borehole for late July is labeled # 4.



Gravity inversion of the target adjacent to Palmeiras filtered to show the most intense gravity response. The figure also shows the planned borehole (blue) designed to test the target.