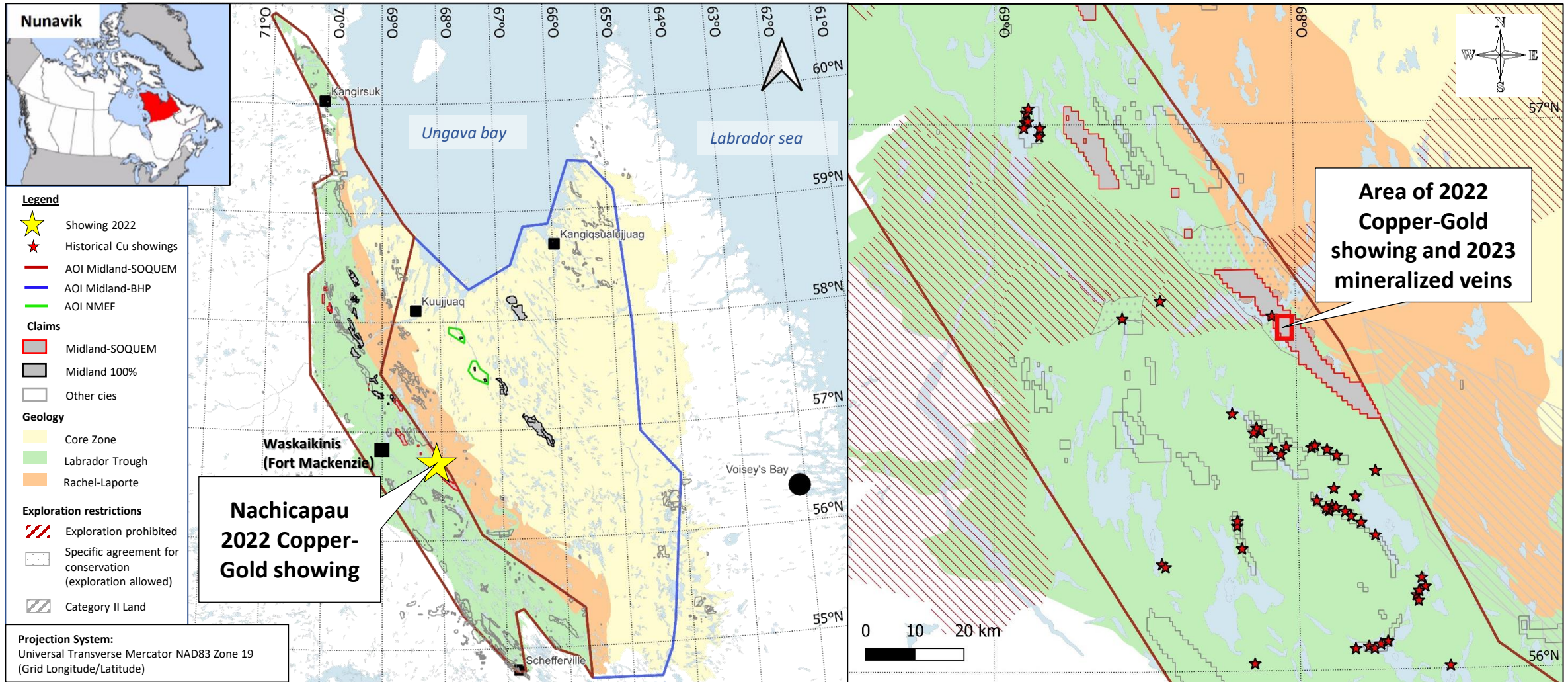
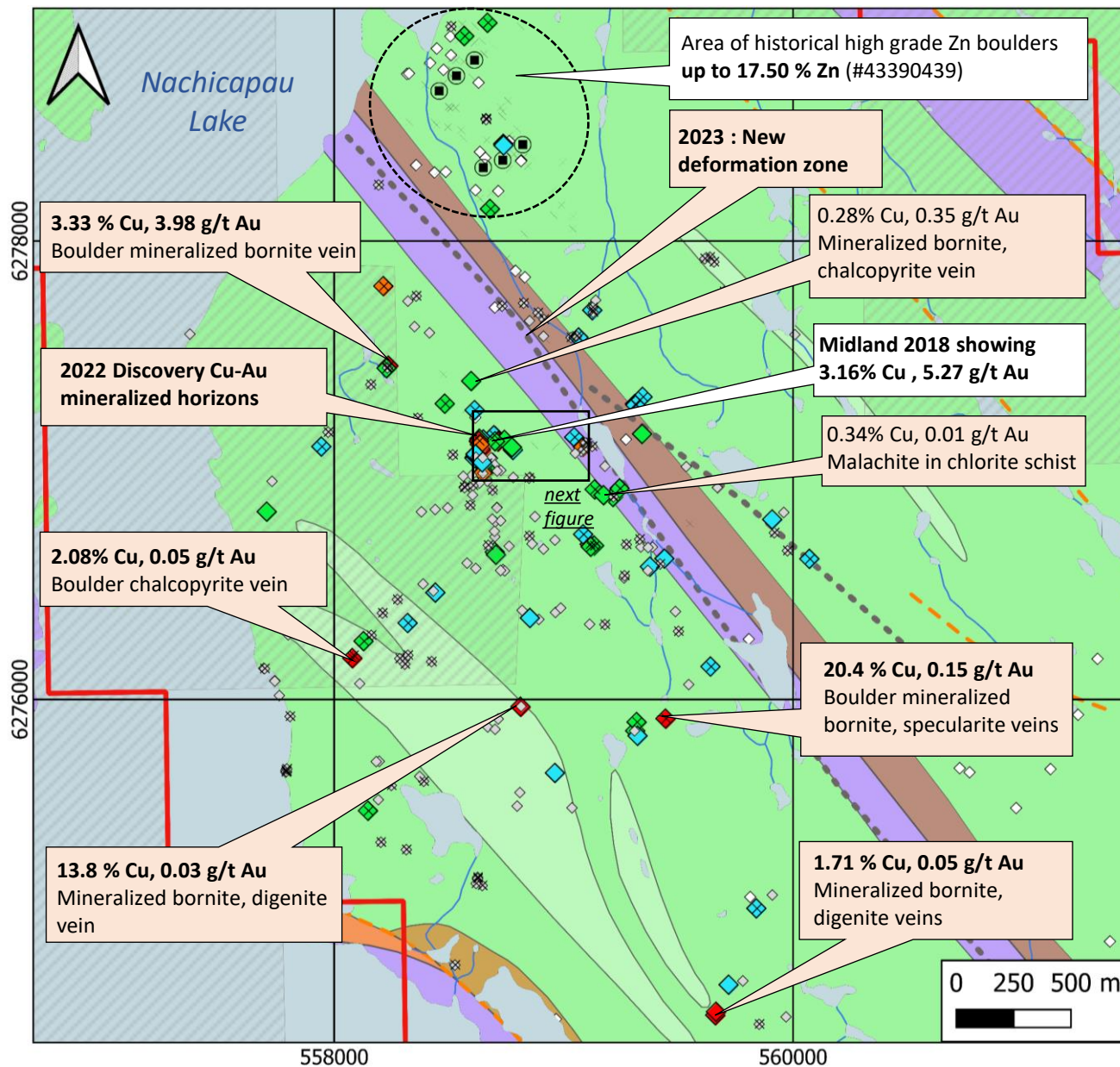


# Midland-SOQUEM Alliance in the Labrador Trough



# 2022-2023 Field Work Results



**Legend**

**Field work**

- 2023 Discovery

**Rock samples 2022-2023**

**Cu ppm**

- < 300
- 300 - 1,000
- 1,000 - 5,000
- 5,000 - 10,000
- >10,000

- ◇ Historical rock samples
- × Boulder
- 2012 Drillhole Virginia

**Mining claims and restrictions**

- Midland-SOQUEM claims
- Specific agreement for conservation (exploration allowed)

**Geology**

**Montagnais Group**

- Aphyric gabbro, olivine gabbro, quartz gabbro, locally pegmatic

**Murdoch Formation**

- Mafic pyroclastic rock (Tuf, lapillis Tuf)
- Magnetic Basalt, Chloritic Schist
- Basalt, massive and pillowed
- Grey mudstone and siltite
- Magnetite bearing Dolomite interbedded with chert

**Baccus Formation**

- Greywacke interbedded with Conglomerate, turbidite

**Denault Formation**

- Grey stromatolitic, laminated Dolomite interbedded with grey and black Chert

**Projection System:**  
Universal Transverse Mercator NAD83 Zone 19

# Nachicapau – Best Results

