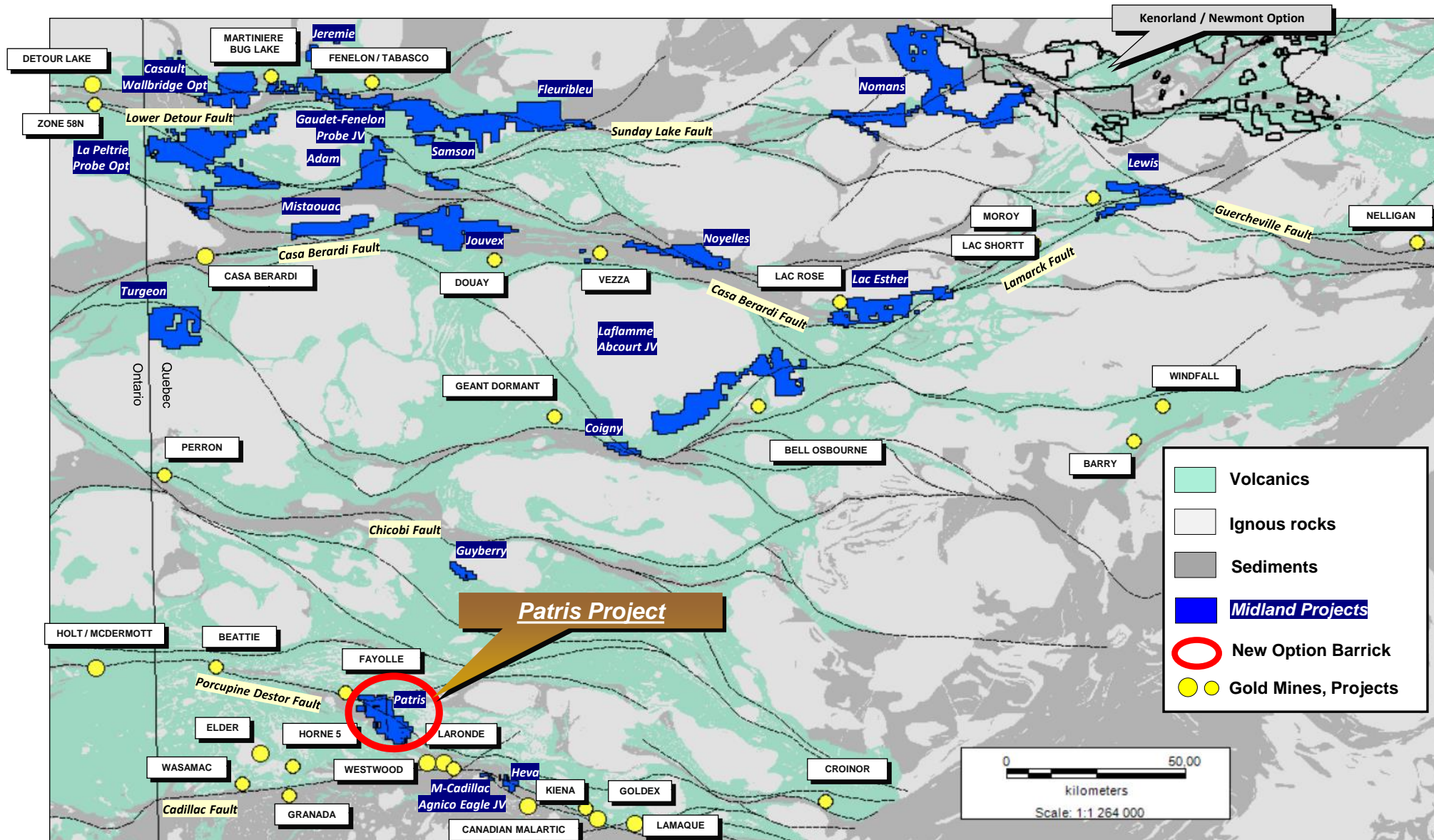


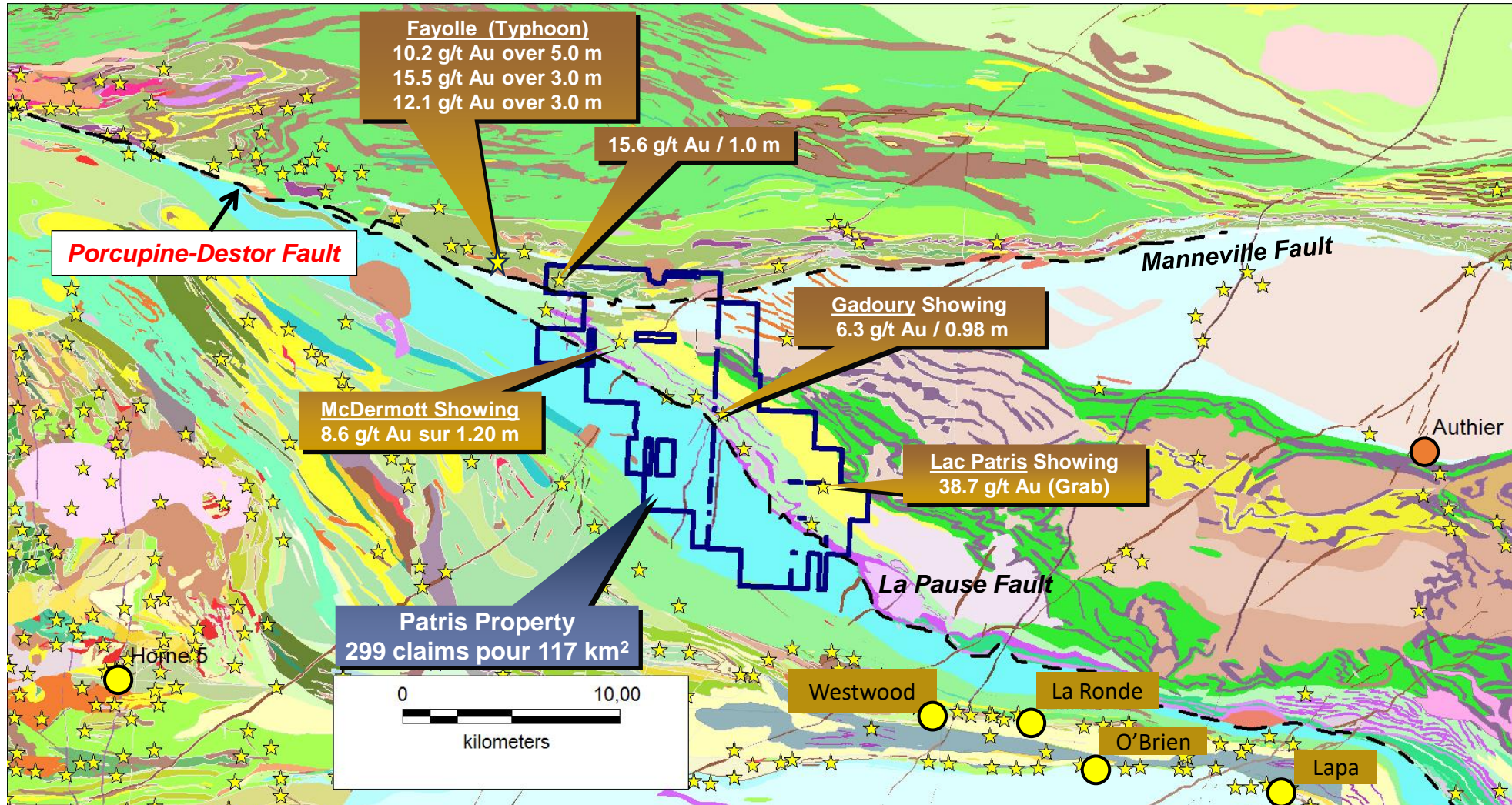
Patris Project Location

BARRICK



Porcupine-Destor Fault – Geology

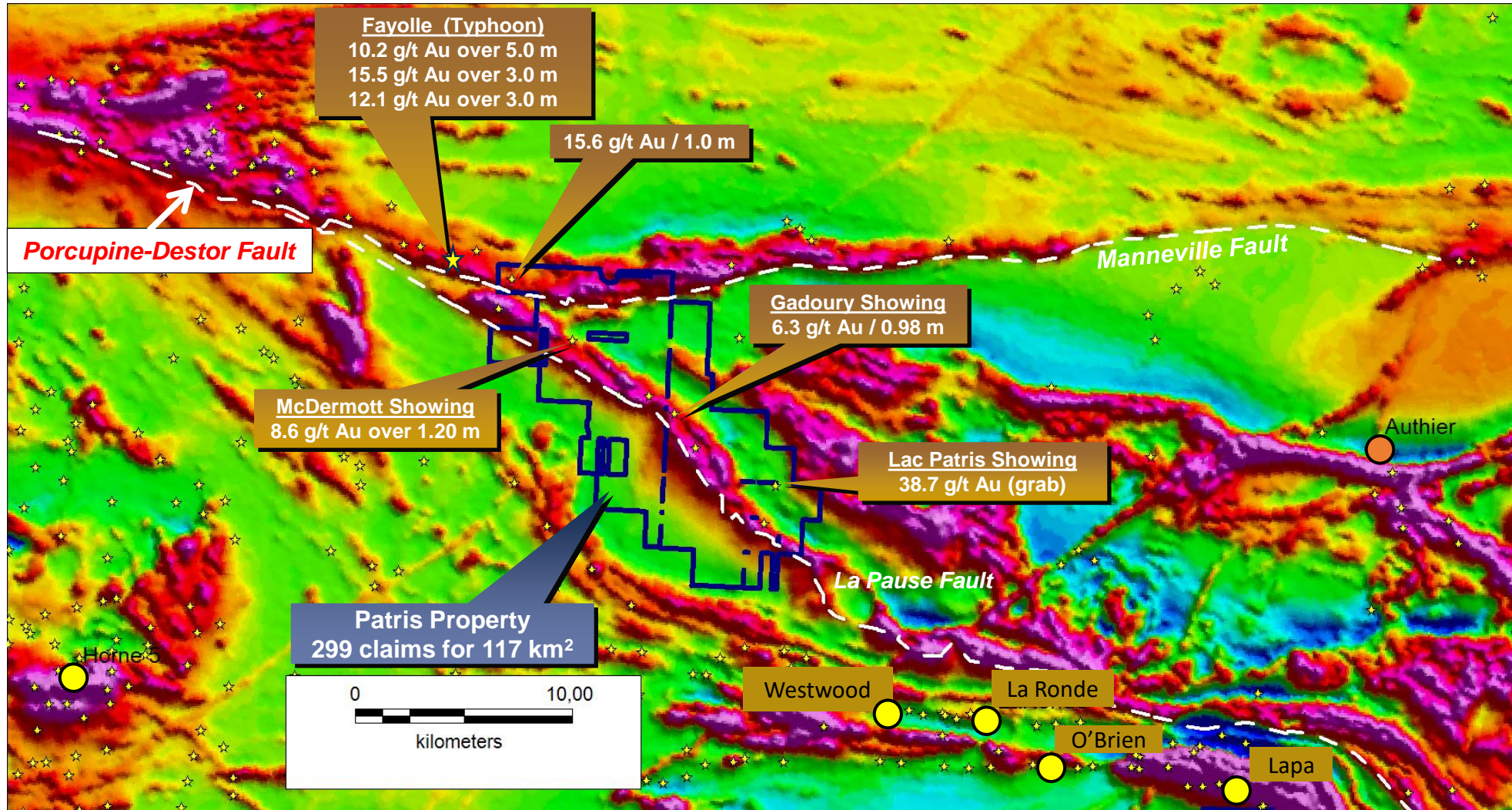
BARRICK



★ Gold Showings

● Gold Mines

Porcupine-Destor Fault – Mag

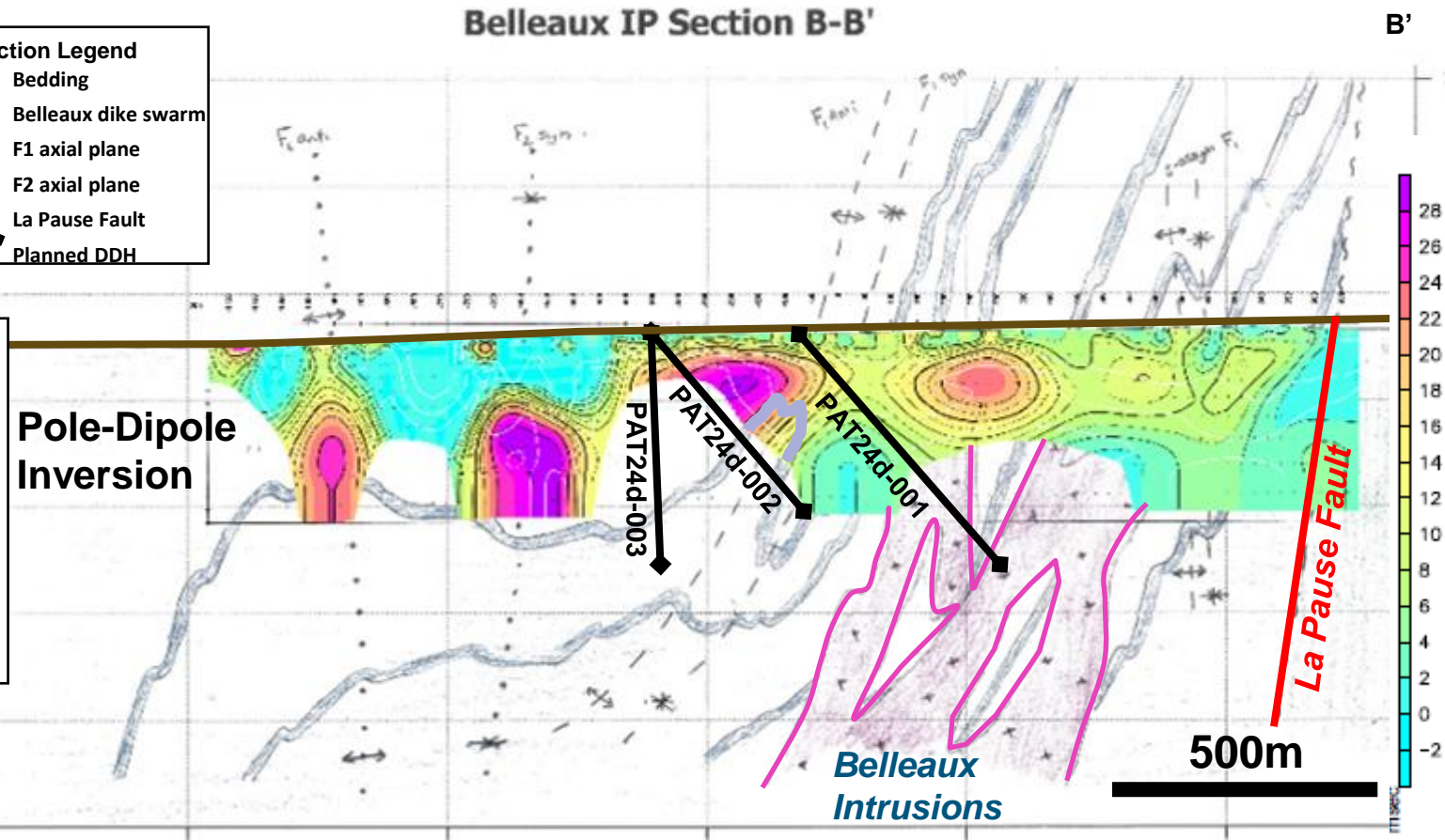
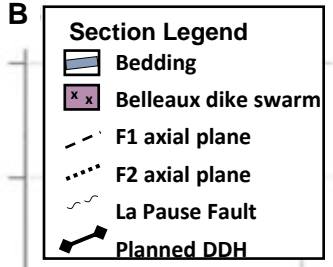
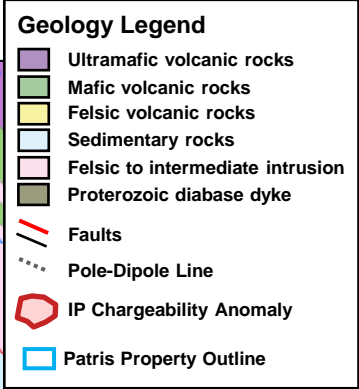
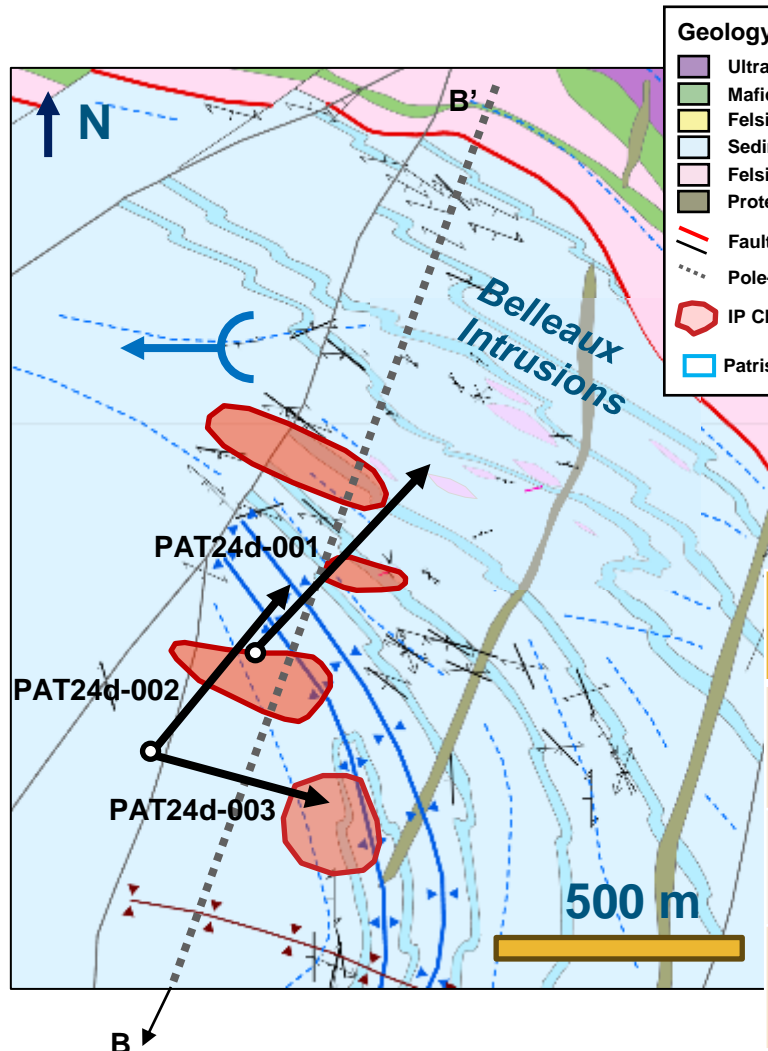


★ Gold Showings

● Gold Mines

Patris Drilling

1,650 m of diamond drilling to test the mineralization potential on the Belleaux target in July



DDH	Target	Orientation	Depth (m)
PAT24d-001	Testing the steep slope of the sediments, several IP chargeability anomalies and which may extend deep into the Belleaux intrusion to test the geometry	50-040	600 m
PAT24d-002	F1 Antiform fold hinge with coincident IP loadability anomaly, can extend depth to Belleaux to test depth extent if necessary	50-040	450 m
PAT24d-003	Testing the hinge of the W-NW plunging F1 antiform and the IP surface anomaly	50-105	600 m