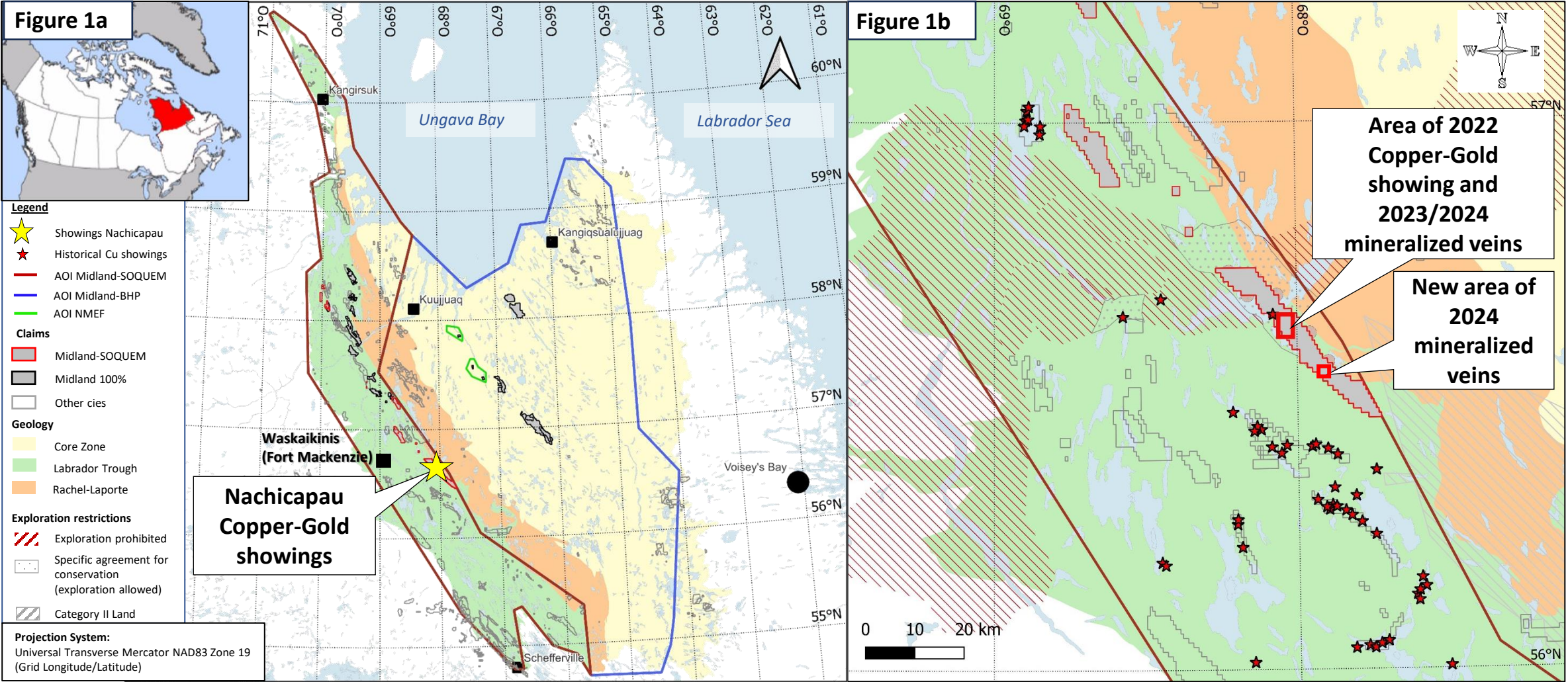
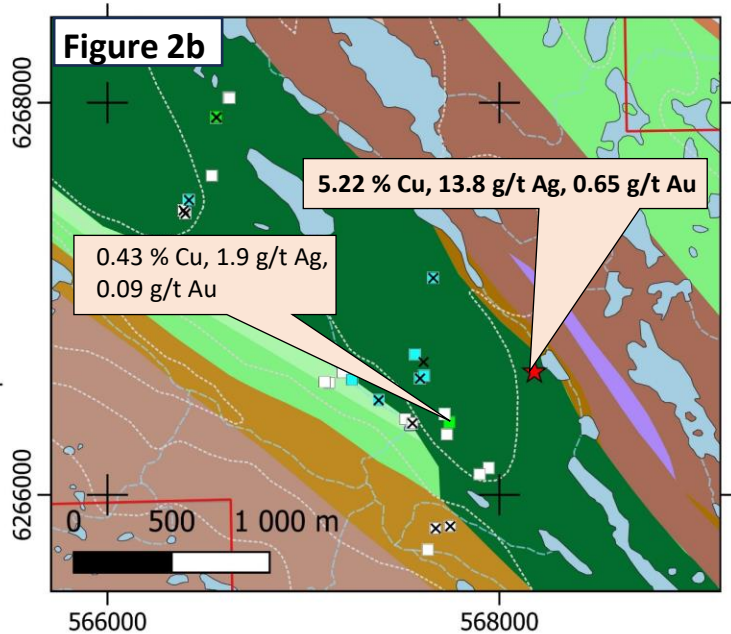
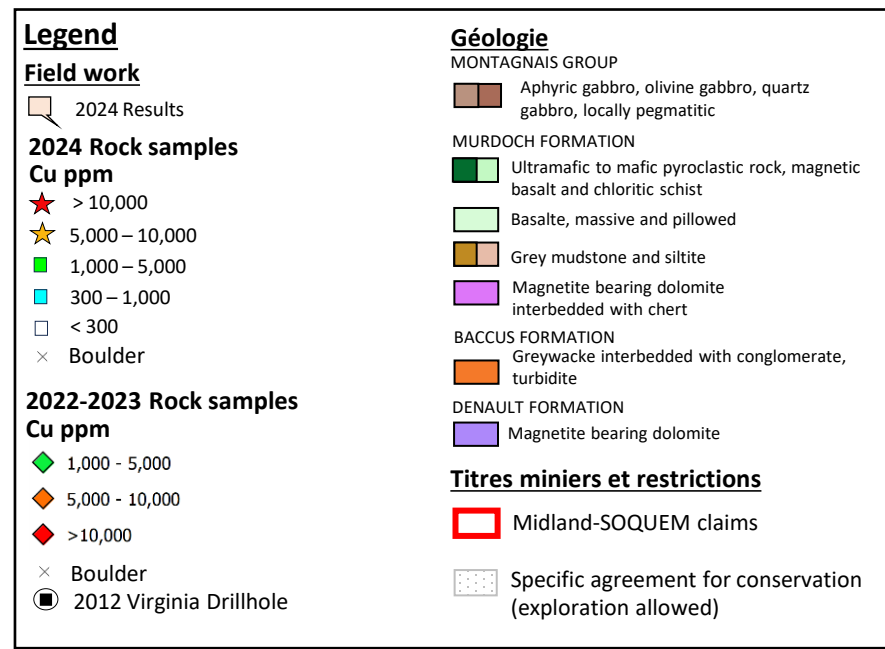
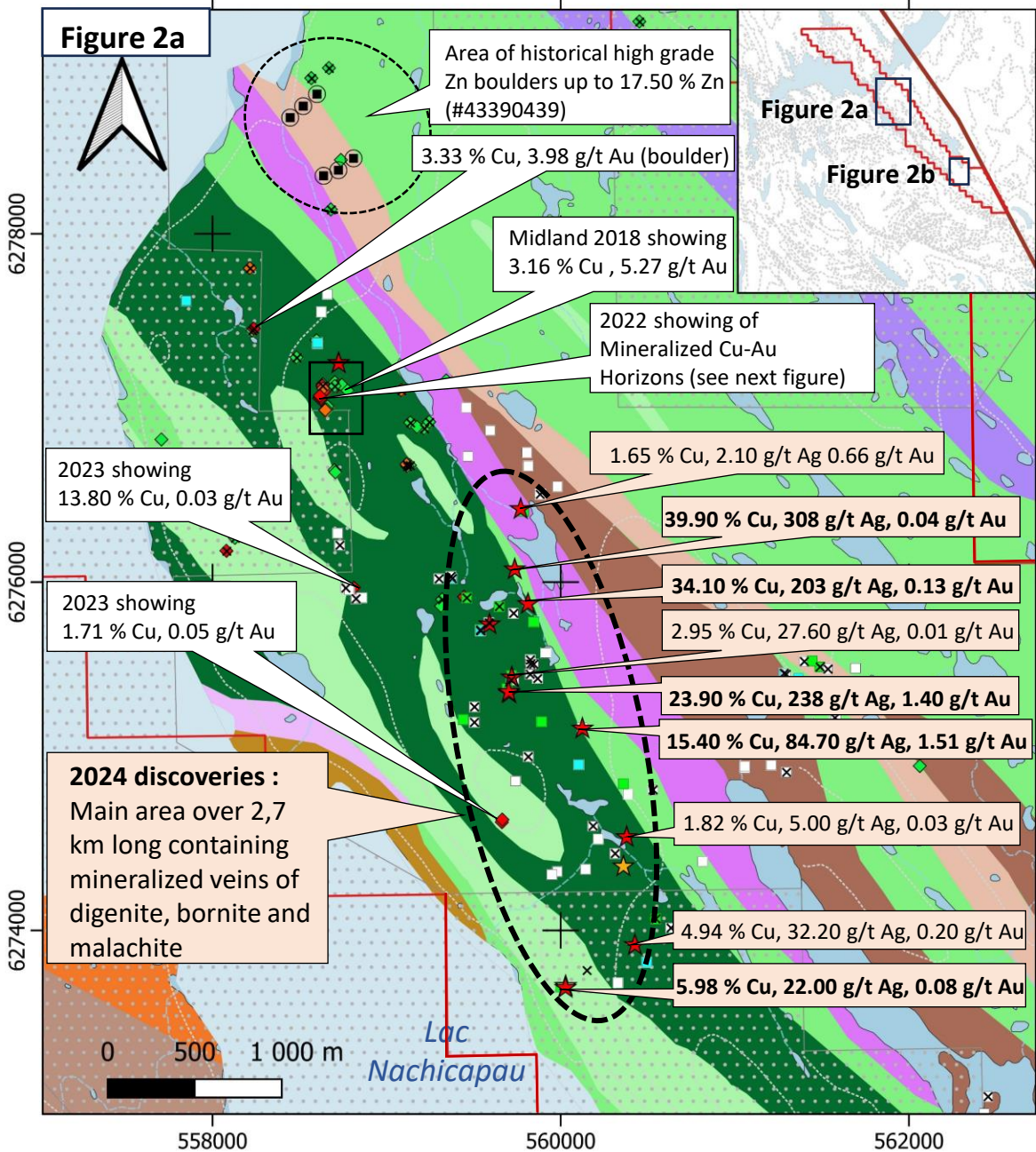


Midland-SOQUEM Alliance Nachicapau Project

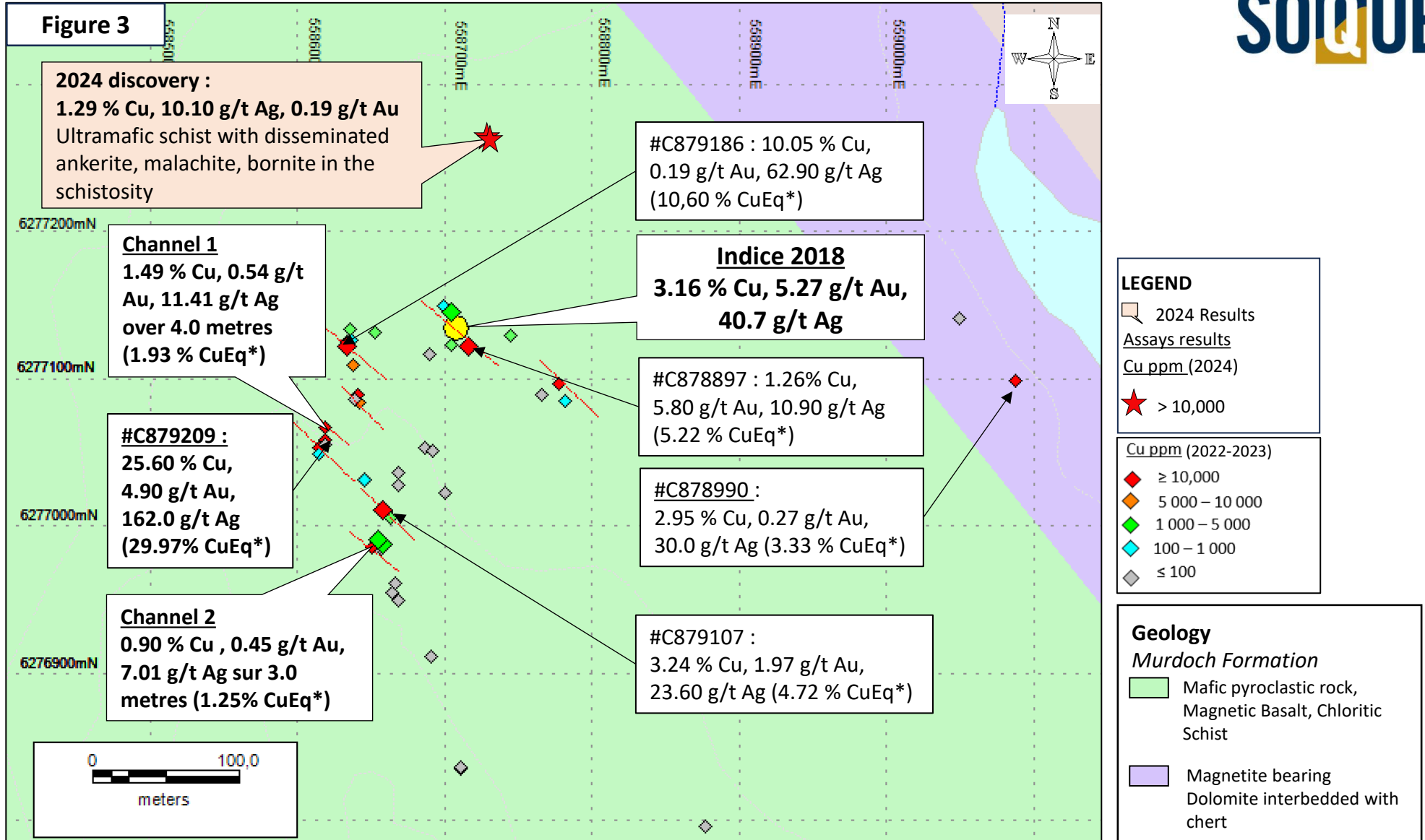


Nachicapau – 2024 Results



Projection System :
Universal Transverse Mercator
NAD83 Zone 19

Nachicapau – Best Results



2024 Photos of Nachicapau Samples



39.90 % Cu, 308.00 g/t Ag, 0.04 g/t Au
Massive bornite, digenite, malachite in a
dm-scale calcite vein (#C1456513)

23.90 % Cu, 238.00 g/t Ag, 1.40 g/t Au
Digenite, malachite, bornite, calcite vein,
cm scale (#C1456119)



0.41 % Cu, 5.10 g/t Ag, 0.08 g/t Au
Cm-scale cluster of malachite
crosscutting the schistosity of the
chloritic schist (#C1456413)



#C1456119

2024 Photos of Nachicapau Samples

5.98 % Cu, 22.00 g/t Ag, 0.08 g/t Au
Fracture-filling malachite-digenite mineralization (#C1456166)



#C1456103



**1.29 % Cu, 10.10 g/t Ag,
0.19 g/t Au**

Ultramafic schist with ankerite,
15 % malachite, 1 % bornite in
the schistosity (#C1456103)

