



**MIDLAND**  
EXPLORATION

TSX-V:MD

# Lasalle Project



June 2024

# Lasalle Project Highlights



- ✓ About 6 km west of the Mirage lithium discovery (Brunswick), that returned up to 1.55%  $\text{Li}_2\text{O}$  over 93.45 m. Lasalle located in the same amphibolite host rock as Mirage.
- ✓ Little historical drilling with only 6 drillholes less than 100 m long each in a restricted area, that targeted surface gold showings.
- ✓ Several favorable muscovite-garnet pegmatites intersected in historical drilling and not analyzed for lithium or associated elements.
- ✓ Strong gold potential, with several orogenic Au as well as magmatic-hydrothermal Au-Ag-Bi-Cu--Mo-Pb-Zn-As showings.
- **New discovery 2023**: Semi-massive sulfides and gossan (20-30% oxidised pyrite and gossan) in mafic volcanic rock returning **42.4 g/t Au** (chip sample from broad area).
- ✓ Strong arsenic footprint in regional lake sediments, suggesting widespread orogenic / volcanogenic / magmatic-hydrothermal mineralization on the project.
- ✓ Currently under option agreement with Cosmos Exploration.



# James Bay – Gold and Lithium Prospects

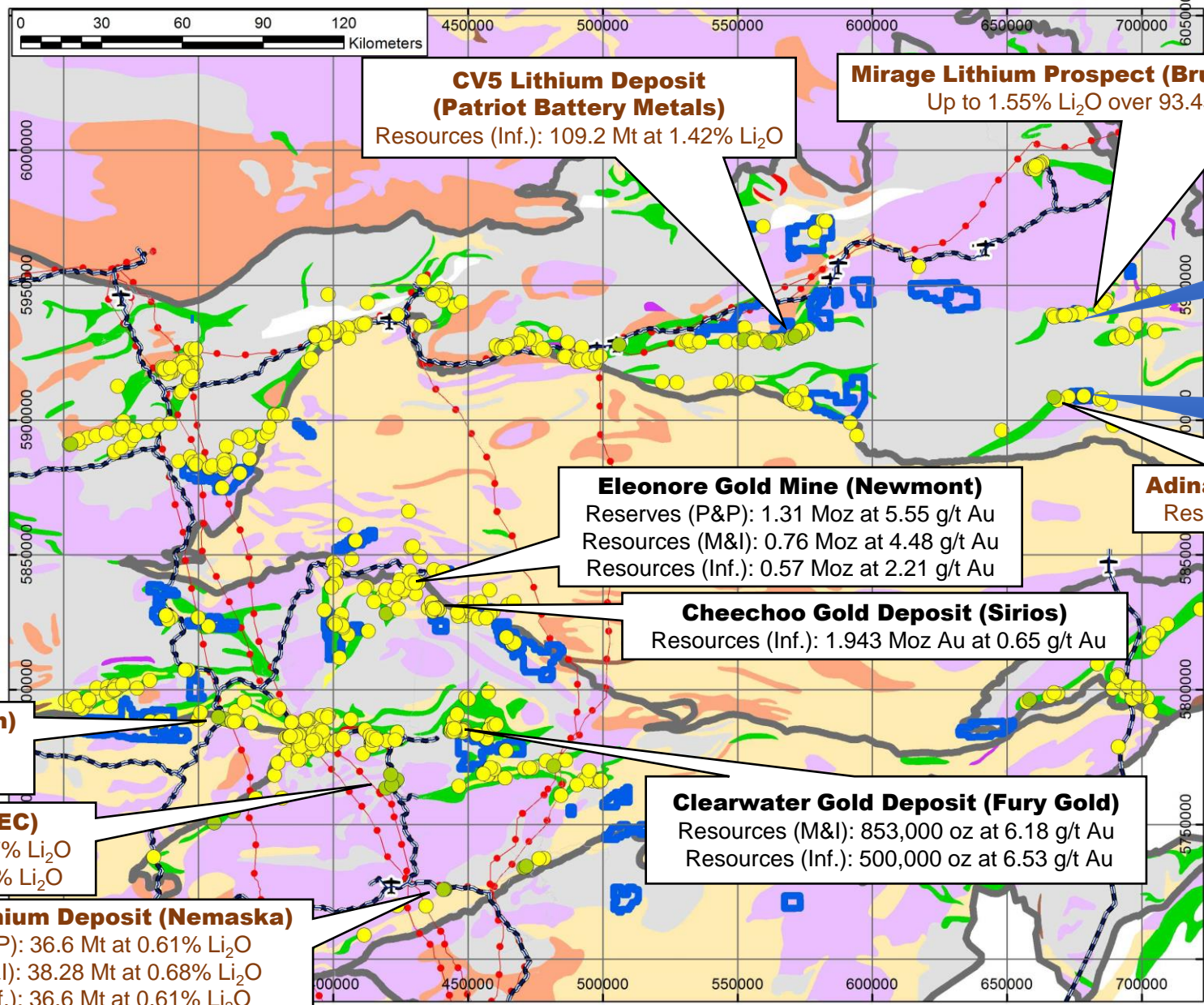


**Gold, Lithium Occurrences**

- Gold occurrence
- Lithium Occurrence
- Main Roads
- Power Line
- Midland Projects Boundaries
- Geol. subprov. limits

**Geology Simpl.**

- Metasedimentary rocks
- Mafic metavolcanic rocks
- Mafic intrusive rocks
- Granites
- Tonalites
- Felsic metavolcanic rocks
- Ultramafic intrusive rocks
- Iron formation
- Monzonites



**CV5 Lithium Deposit (Patriot Battery Metals)**  
Resources (Inf.): 109.2 Mt at 1.42% Li<sub>2</sub>O

**Mirage Lithium Prospect (Brunswick)**  
Up to 1.55% Li<sub>2</sub>O over 93.45m

**Lasalle project**  
Cosmos Option

**Galinée project**  
New 2023 Li Discovery  
Rio Tinto Option

**Eleonore Gold Mine (Newmont)**  
Reserves (P&P): 1.31 Moz at 5.55 g/t Au  
Resources (M&I): 0.76 Moz at 4.48 g/t Au  
Resources (Inf.): 0.57 Moz at 2.21 g/t Au

**Adina Lithium Deposit (Winsome)**  
Resources (Inf.): 59 Mt at 1.12% Li<sub>2</sub>O

**Cheechoo Gold Deposit (Sirios)**  
Resources (Inf.): 1.943 Moz Au at 0.65 g/t Au

**James Bay Lithium Deposit (Allkem)**  
Reserves (Prob.): 37.2 Mt at 1.3% Li<sub>2</sub>O  
Resources (I.): 40.3 Mt at 1.4% Li<sub>2</sub>O

**Rose Lithium Deposit (CEC)**  
Reserves (Prob.): 26.3 Mt at 0.87% Li<sub>2</sub>O  
Resources (I.): 30.56 Mt at 0.93% Li<sub>2</sub>O

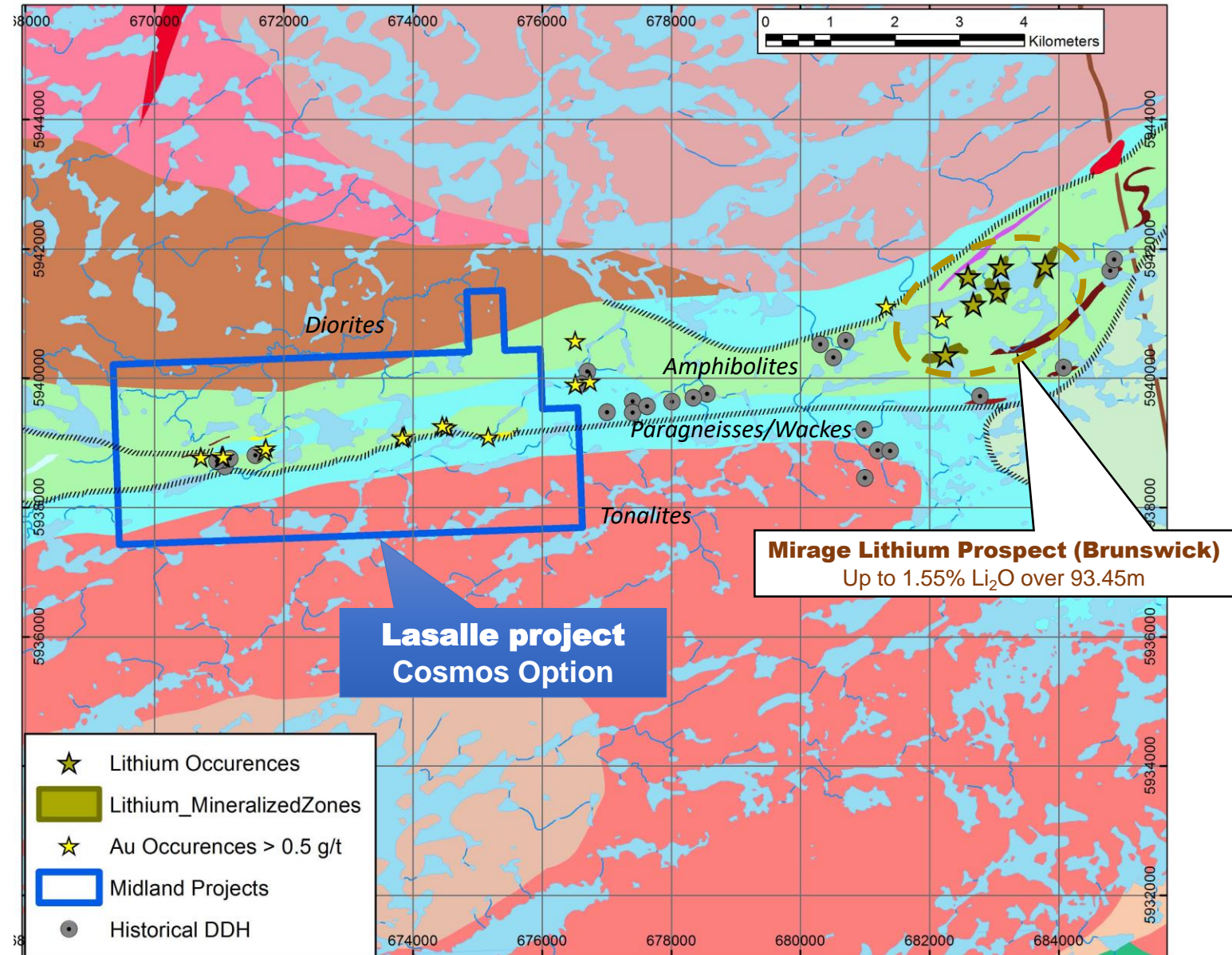
**Clearwater Gold Deposit (Fury Gold)**  
Resources (M&I): 853,000 oz at 6.18 g/t Au  
Resources (Inf.): 500,000 oz at 6.53 g/t Au

**Whabouchi Lithium Deposit (Nemaska)**  
Reserves (P&P): 36.6 Mt at 0.61% Li<sub>2</sub>O  
Resources (M&I): 38.28 Mt at 0.68% Li<sub>2</sub>O  
Resources (Inf.): 36.6 Mt at 0.61% Li<sub>2</sub>O



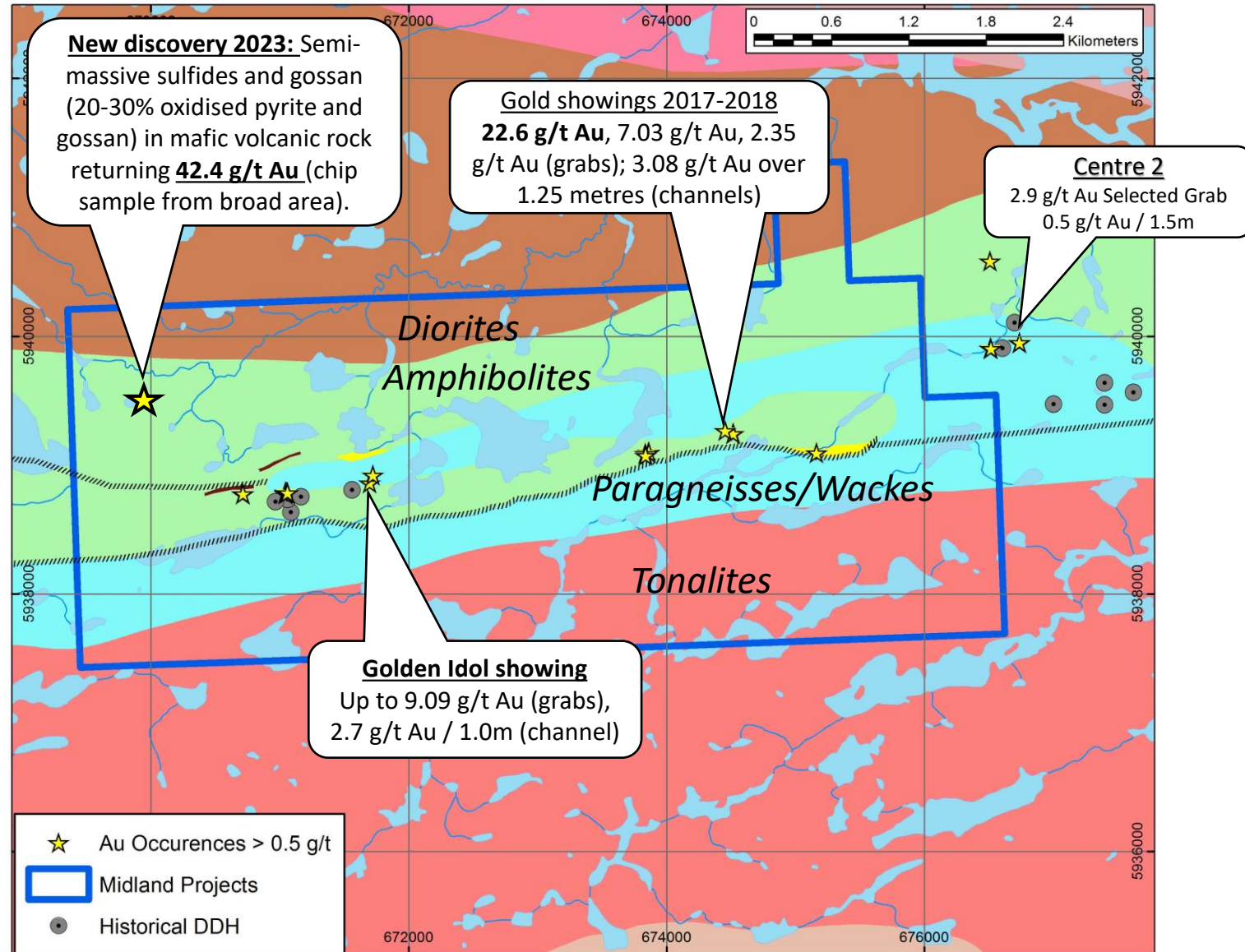
# Lasalle Area – Lithium Potential

- Several high-grade lithium bearing pegmatites on the Mirage project (Brunswick) 6 km east of Lasalle, in the same host rocks
- Only 6 historical DDH on Lasalle, all less than 100 m deep, and only tested a limited area of the project for gold (no drilling or analysis for lithium)
- Several pegmatites with muscovite-garnet (favorable) have been intersected in these historical DDH and have not been sampled / analyzed for lithium or associated elements



# Lasalle – Gold Showings

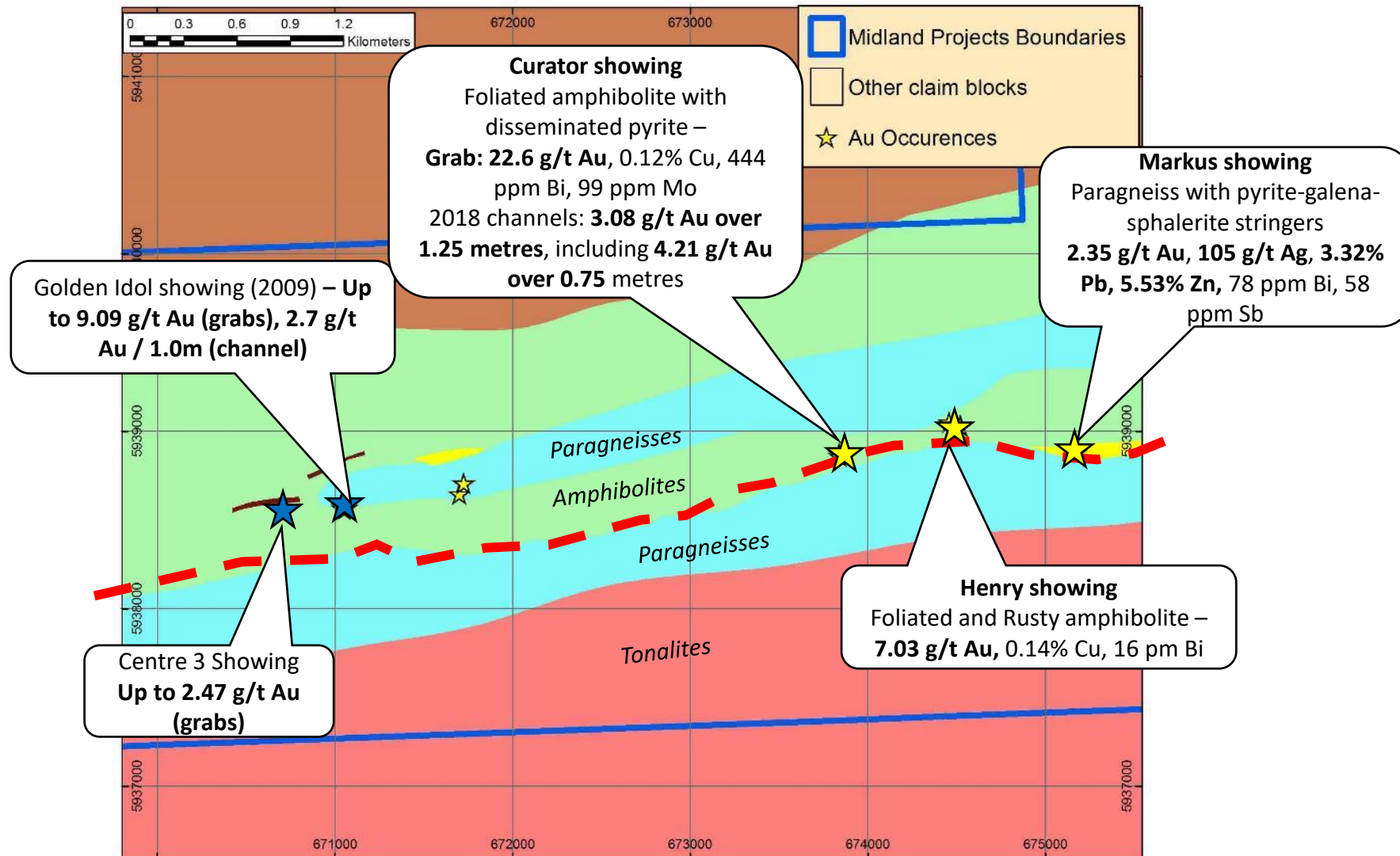
- Several gold showings of various gold-metals associations are present on the project: Au-As, Au-Cu, Au-Zn-Pb, Au-Bi-Mo
- **New discovery 2023:** Semi-massive sulphide and gossan (20-30% oxidised pyrite and gossan) in mafic volcanic rock returning **42.4 g/t Au** (chip sample from broad area).
- **Suggest a superposition of gold-bearing events, typical of important gold districts**
- Various host rocks: amphibolites, BIF, wackes, felsic volcanics
- Only 6 historical DDH on Lasalle, all less than 100 m deep, and only tested a limited area of the project





# Lasalle – Gold Showings 2017-2018 – Zoom

- The Au-Cu-Bi-Mo and Au-Ag-Pb-Zn-Bi-Sb associations of the new 2017 gold showings suggest a **magmatic-hydrothermal system** rather than classic orogenic gold
- **18 outcrop samples returned >0.1 g/t Au, out of 132 grab samples collected in the area in 2017**



# Lasalle – Gold Showings 2017-2018 – Zoom

- Very Strong geochemical footprint in lake sediments – 2 samples over the 98<sup>th</sup> percentile of the regional Quebec Government database (n=32000)
- Caused by various types of As-bearing mineralization in the belt

