



**MIDLAND**  
EXPLORATION

TSX -V:MD

# Caniapisc Au Project



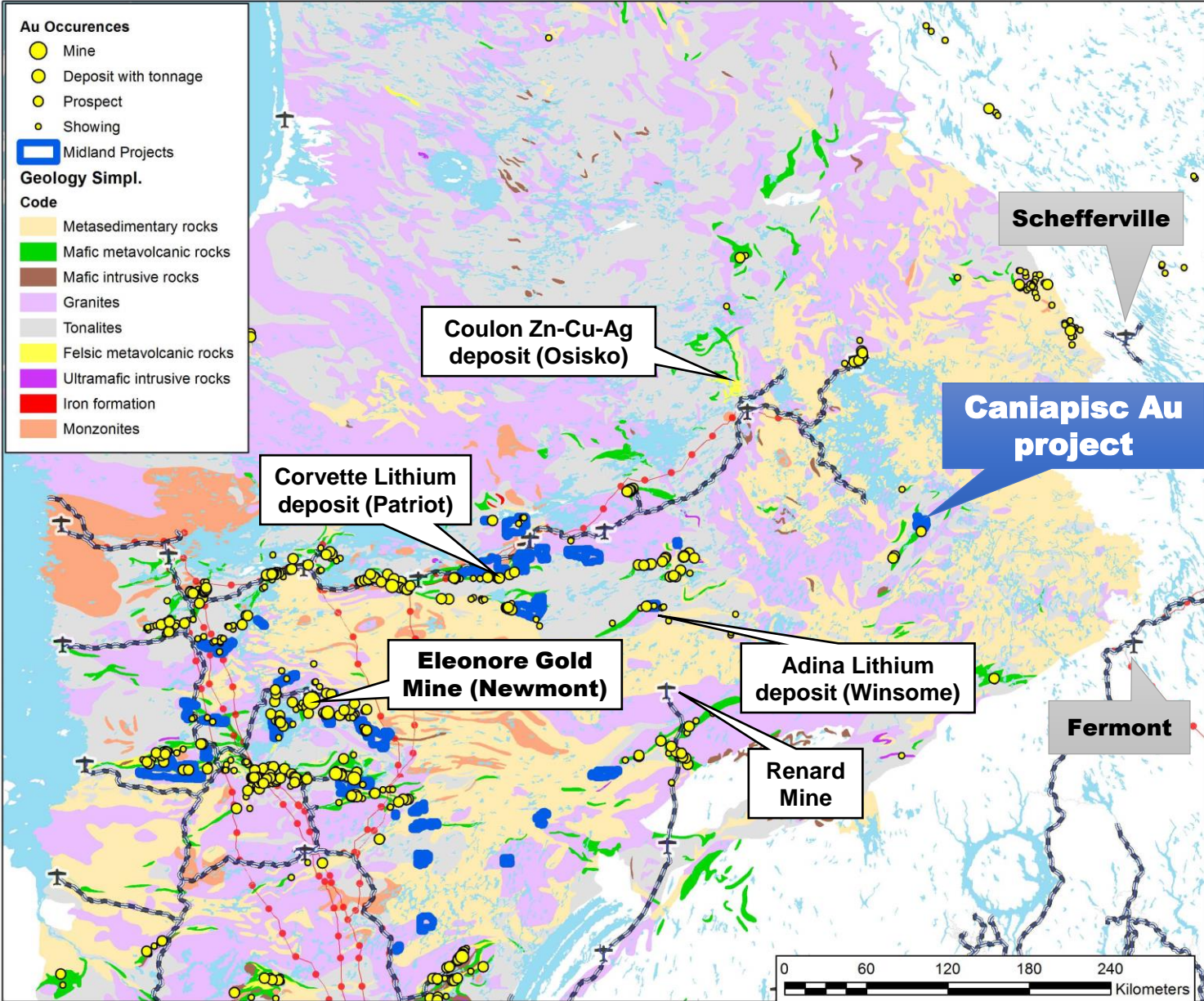
November 2024

# Caniapisc Au Project Highlights



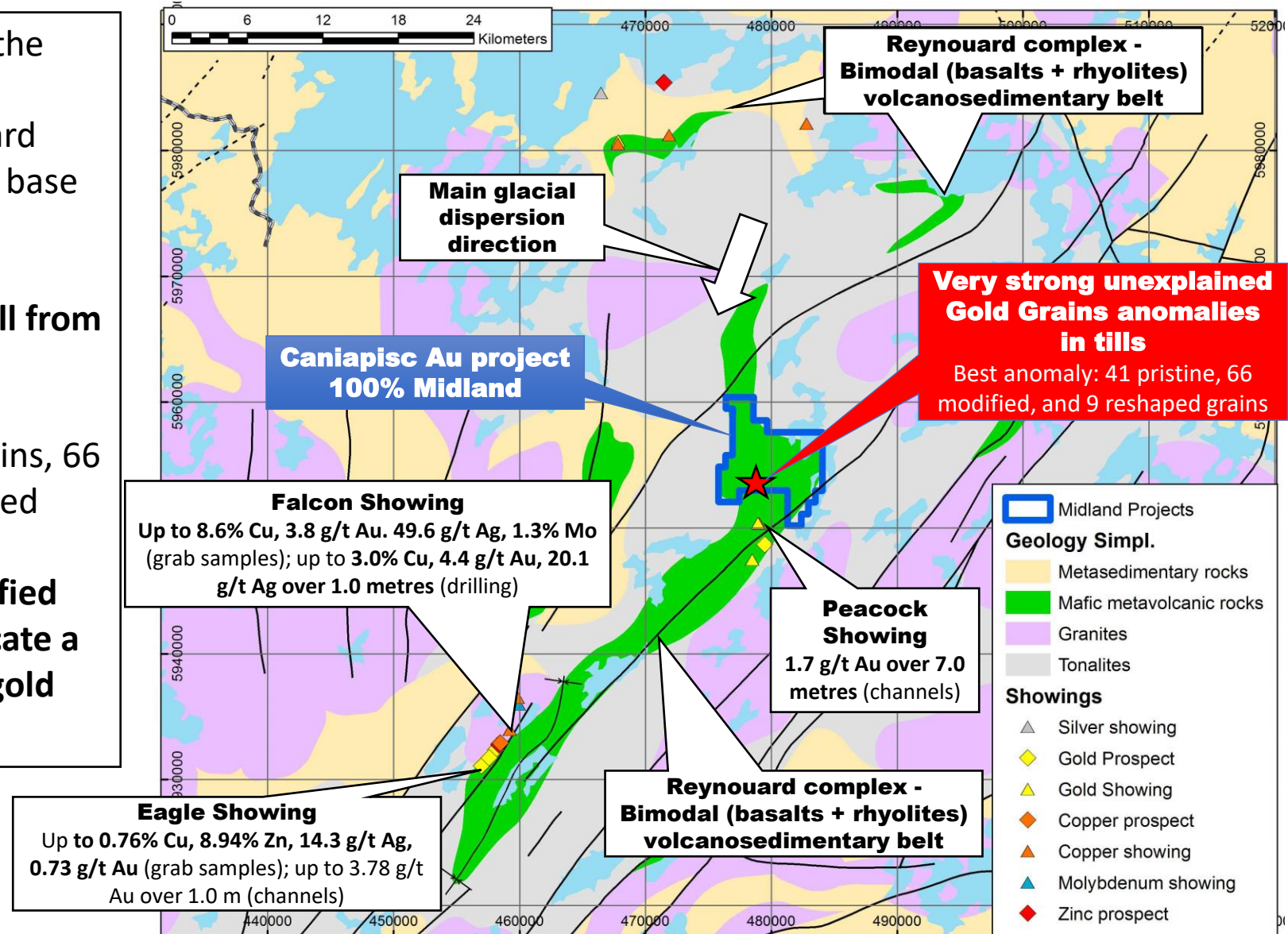
- ✓ Favorably located within the Reynouard volcanosedimentary complex, that hosts several historical gold and base metals prospects and showings
  - ✓ Peacock gold showing located 2.5 km south of the project that yielded 1.7 g/t Au over 7.0 m (channels).
- ✓ Historical, **very strong and unexplained gold anomalies in till samples on the project.**
- ✓ **Best till sample has 41 pristine, 66 modified and 9 reshaped gold grains - this high proportion of pristine and modified gold grains indicates a proximal bedrock source of gold.**
- ✓ Little recorded previous exploration on the project.
- ✓ Resampling of three (3) historical till samples and two (2) additional follow-up till samples up-ice;
- ✓ Fifteen (15) samples with anomalous gold, ranging from 0.10 to 0.75 g/t Au, located near historical gold-bearing tills;

# James Bay – Mines and Prospects



# Caniapisc Au Project Geology and Showings

- Caniapisc Au project covers 8 x 7 km of the Reynouard bimodal (basalts + rhyolite) volcanosedimentary complex. Reynouard complex hosts to several types of gold, base metals showings
- **Very strong gold grains anomalies in till from a previous exploration campaign, that remain unexplained**
  - Best anomaly: 41 pristine gold grains, 66 modified gold grains and 9 reshaped gold grains (116 total)
  - **High proportion of pristine, modified gold grains in the till sample indicate a proximal bedrock source for the gold grains, usually less than 1 km.**



# Caniapisc Au – Results

