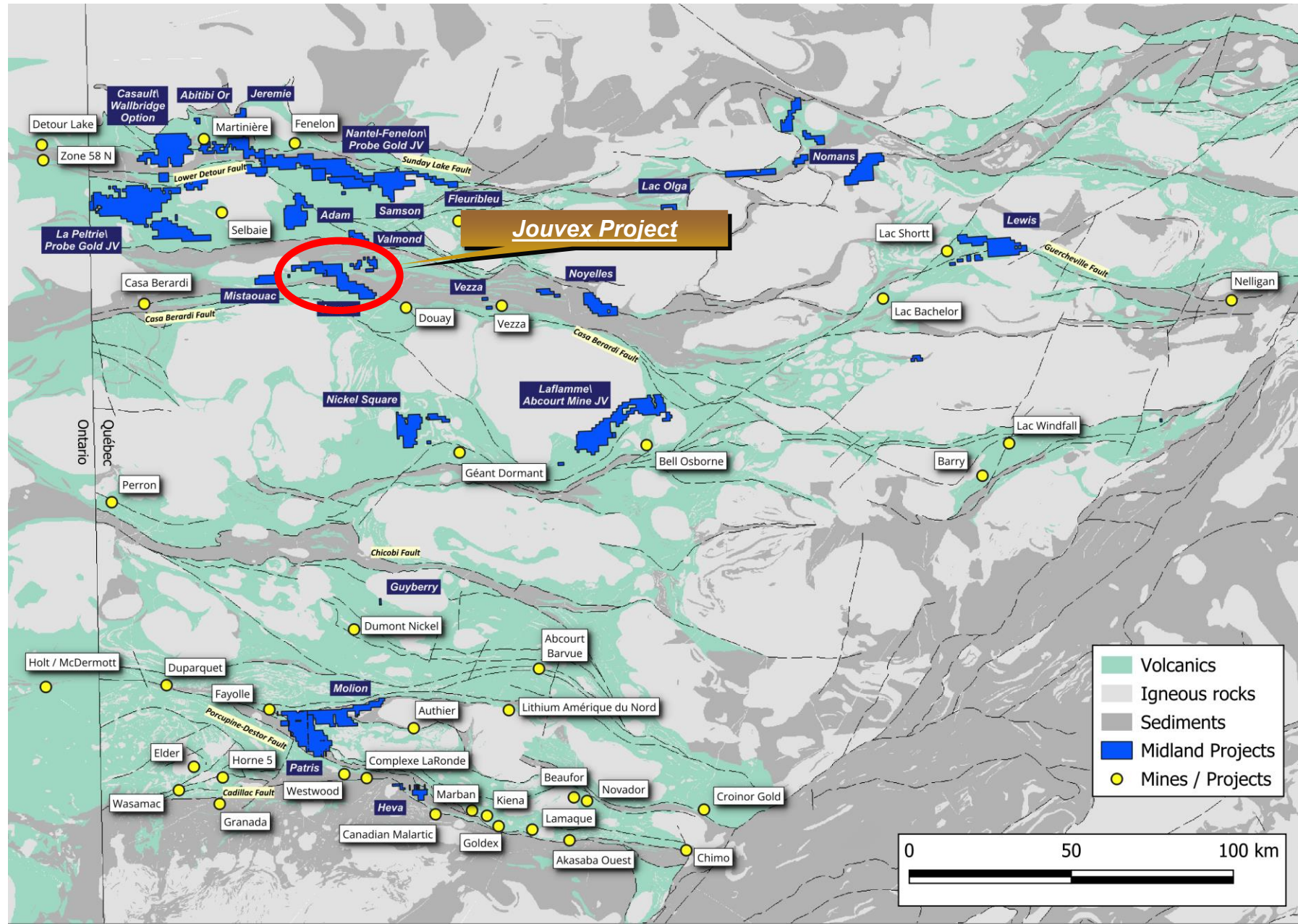
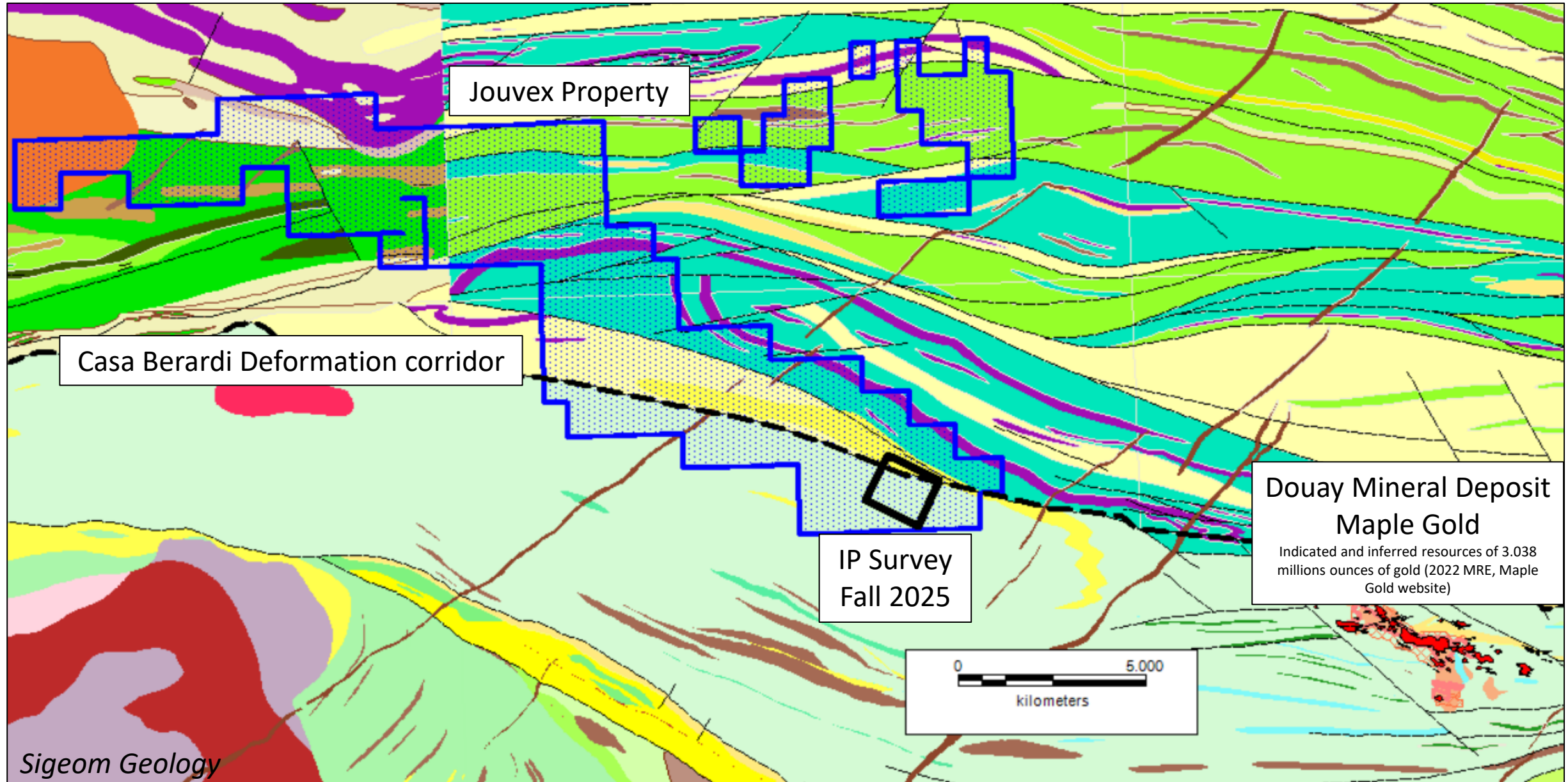


Jouvex Project Location



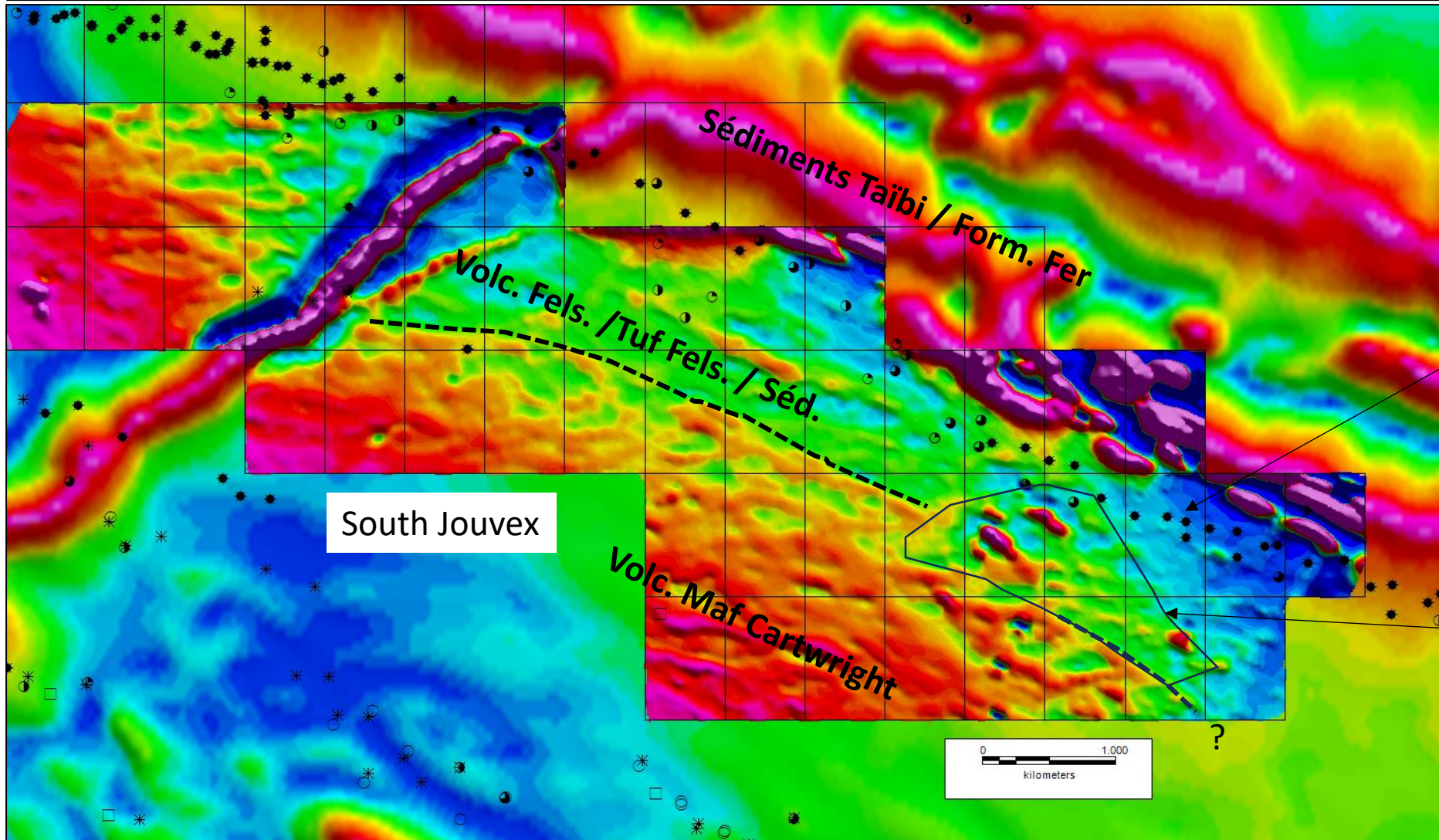
Jouvex – 2025 IP Survey Location



Drone Mag Survey- Gradient

High-resolution drone survey was carried out in the south of Jouvex

- The gradient clearly shows different magnetic grains that correspond to the lithologies.
- Also, a distinct zone that cuts the regional grain at the contact between felsic and mafic volcanics.



Discontinuity between the Taïbi and the volcanics marked by a band of pyritic clay detected by regional inputs

Different Magnetic Signature, interferes the contact of 2 Geological Units on the Casa Berardi deformation zone