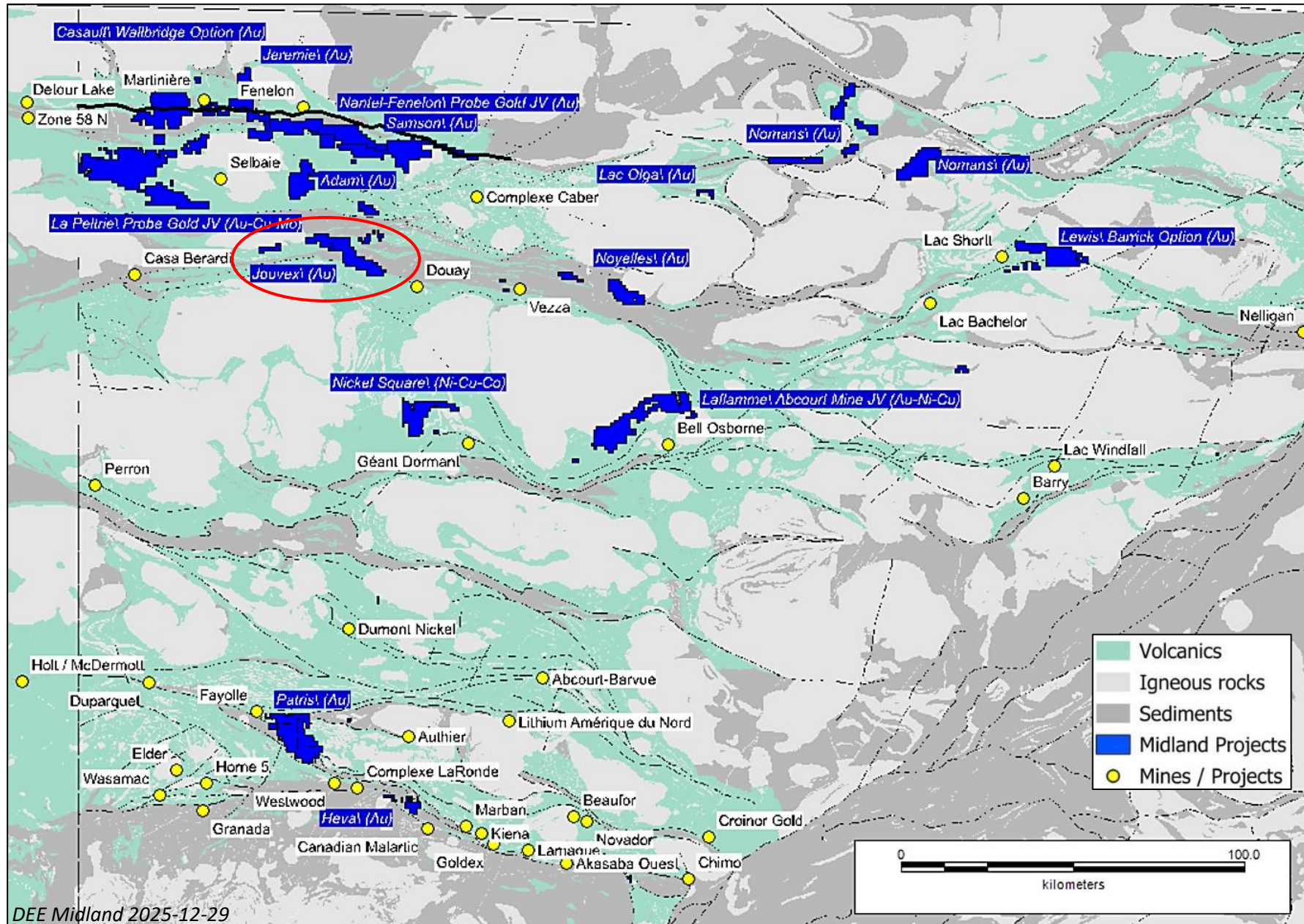
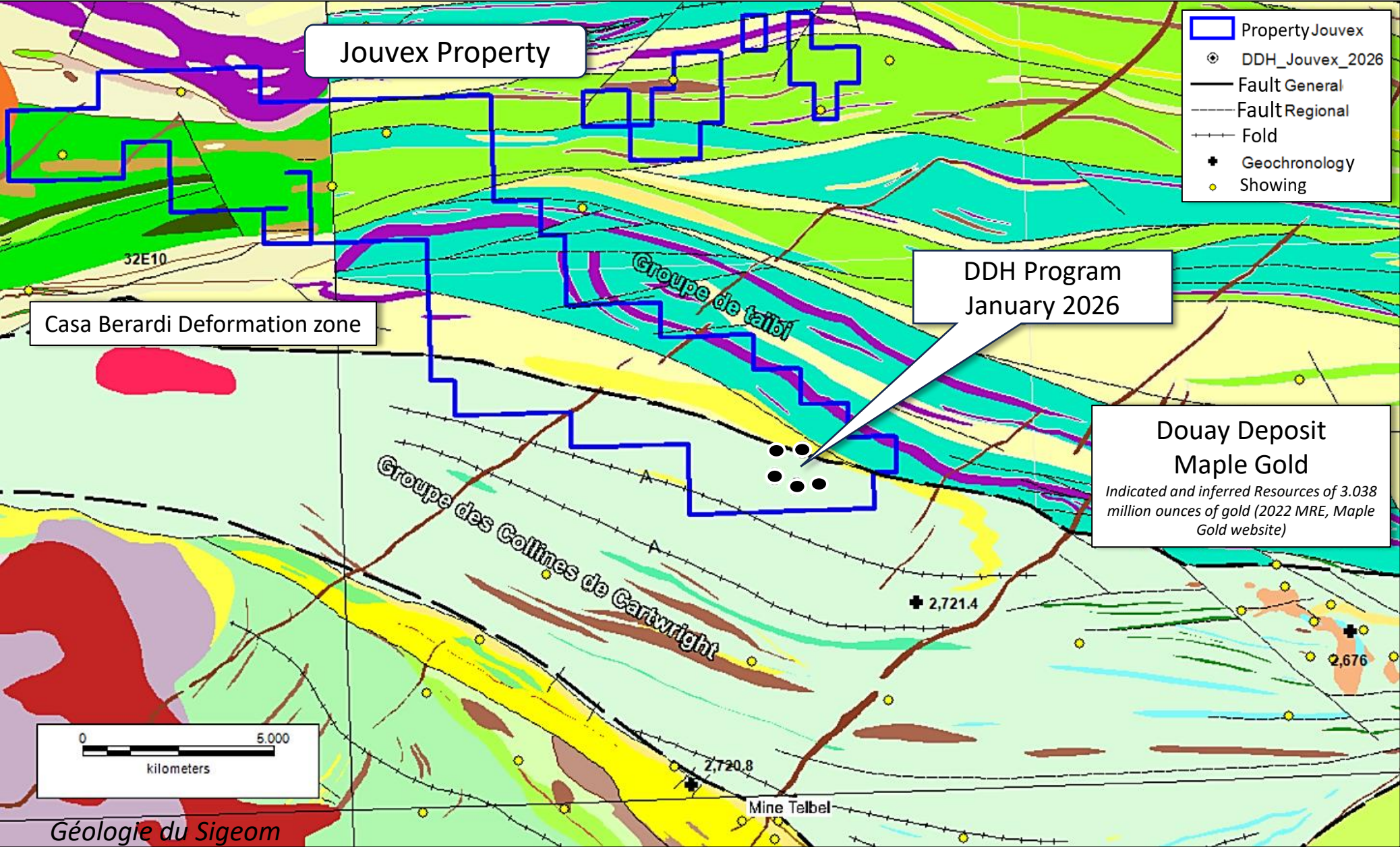


Jouvex Property - Location in Abitibi



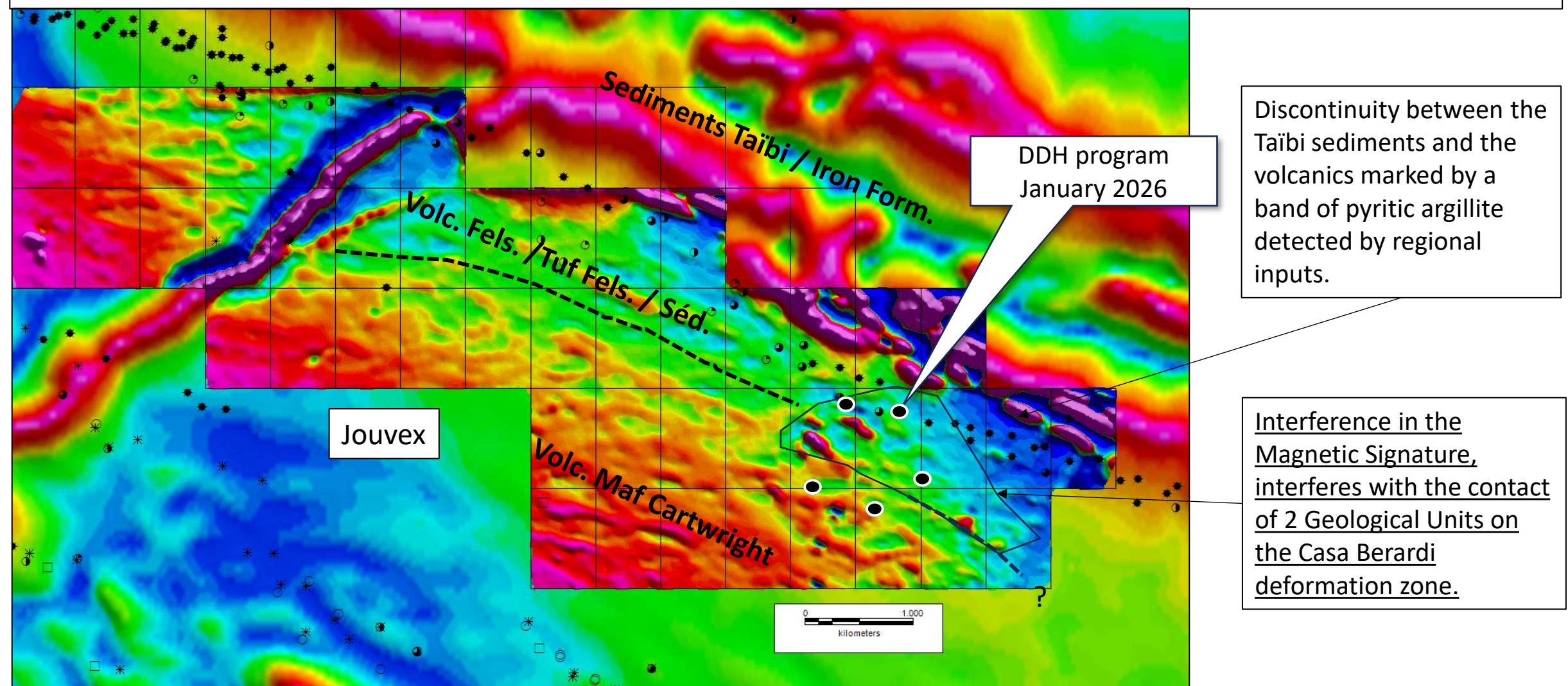
Jouvex – Diamond Drill Program 2026



Mag Survey – First Vertical Derivative

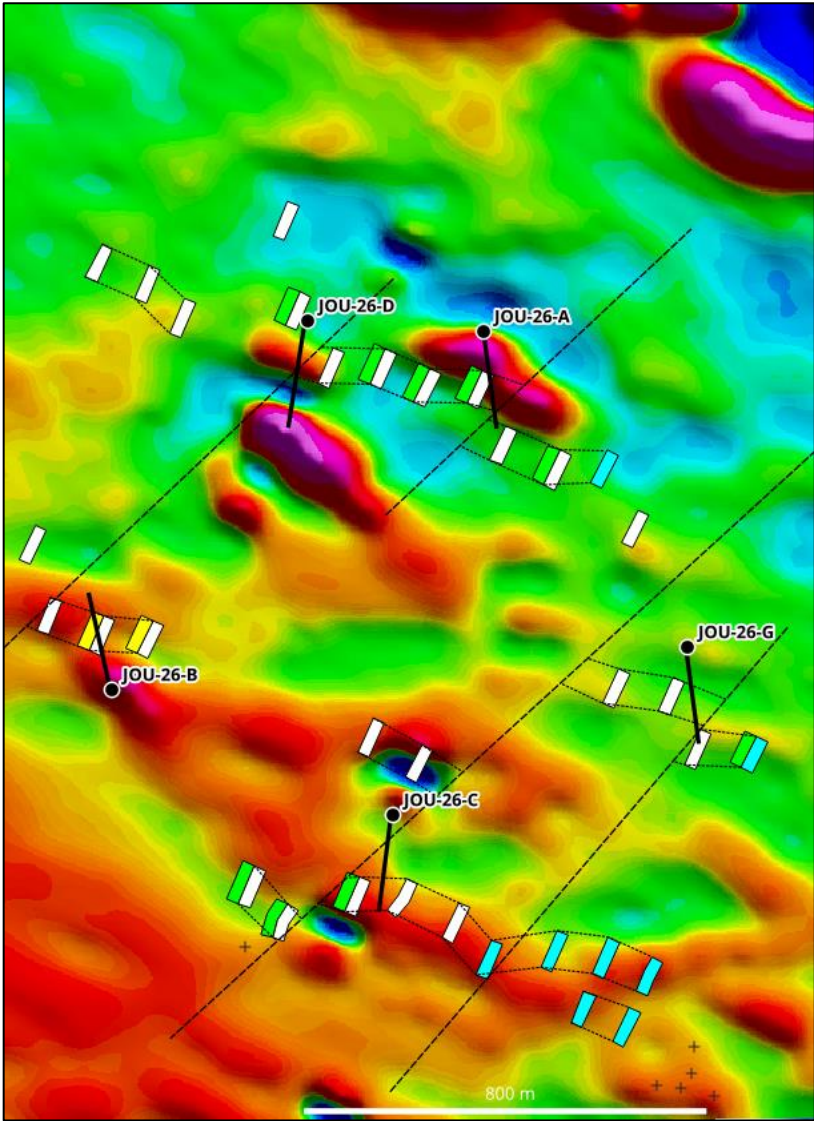
A high-resolution mag drone survey was carried out in the south of the Jouvex property.

- The Mag survey shows different magnetic grains that correspond to the lithologies, Also, a distinct area that cuts the regional grain in contact with felsic and mafic volcanics.

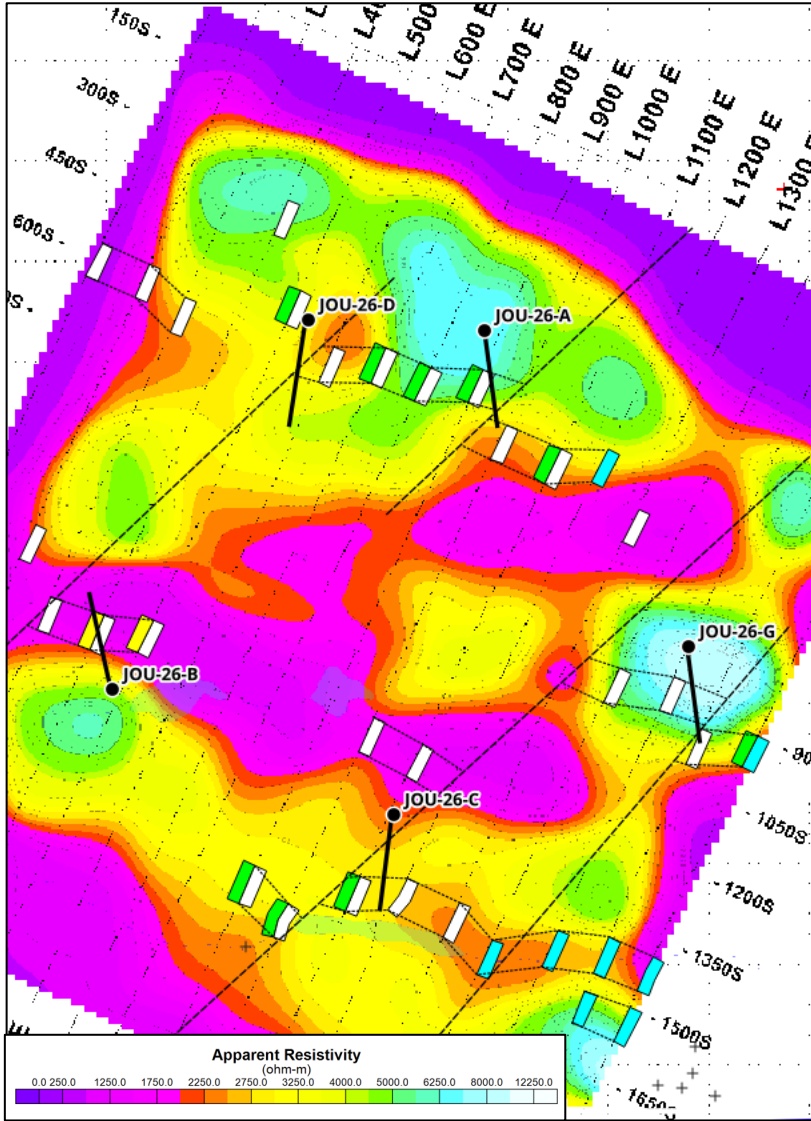


Jouvex – DDH 2026 - Geophysics

Mag 1VD



IP Resistivity 75m vertical



IP Chargeability 75m vertical

