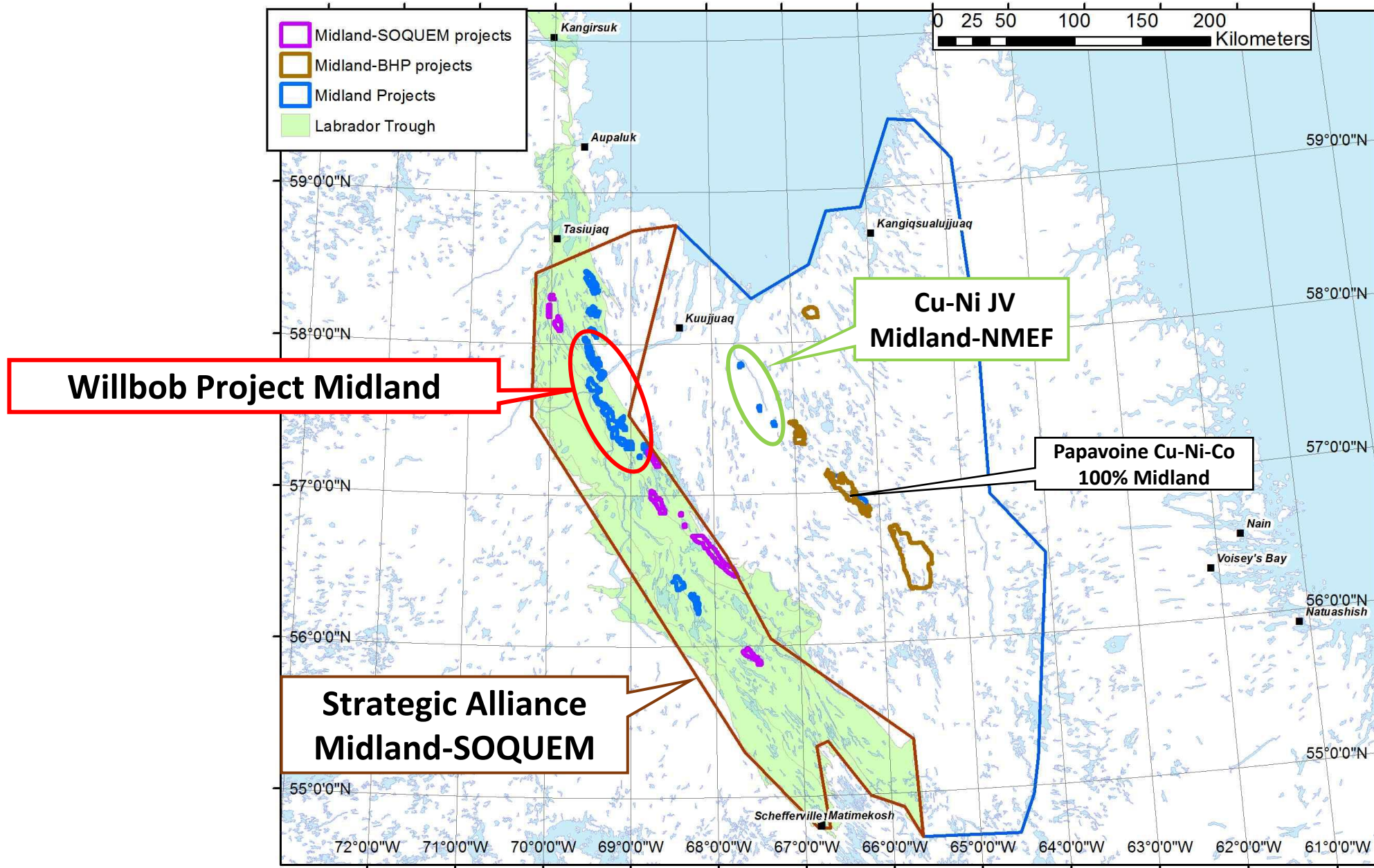
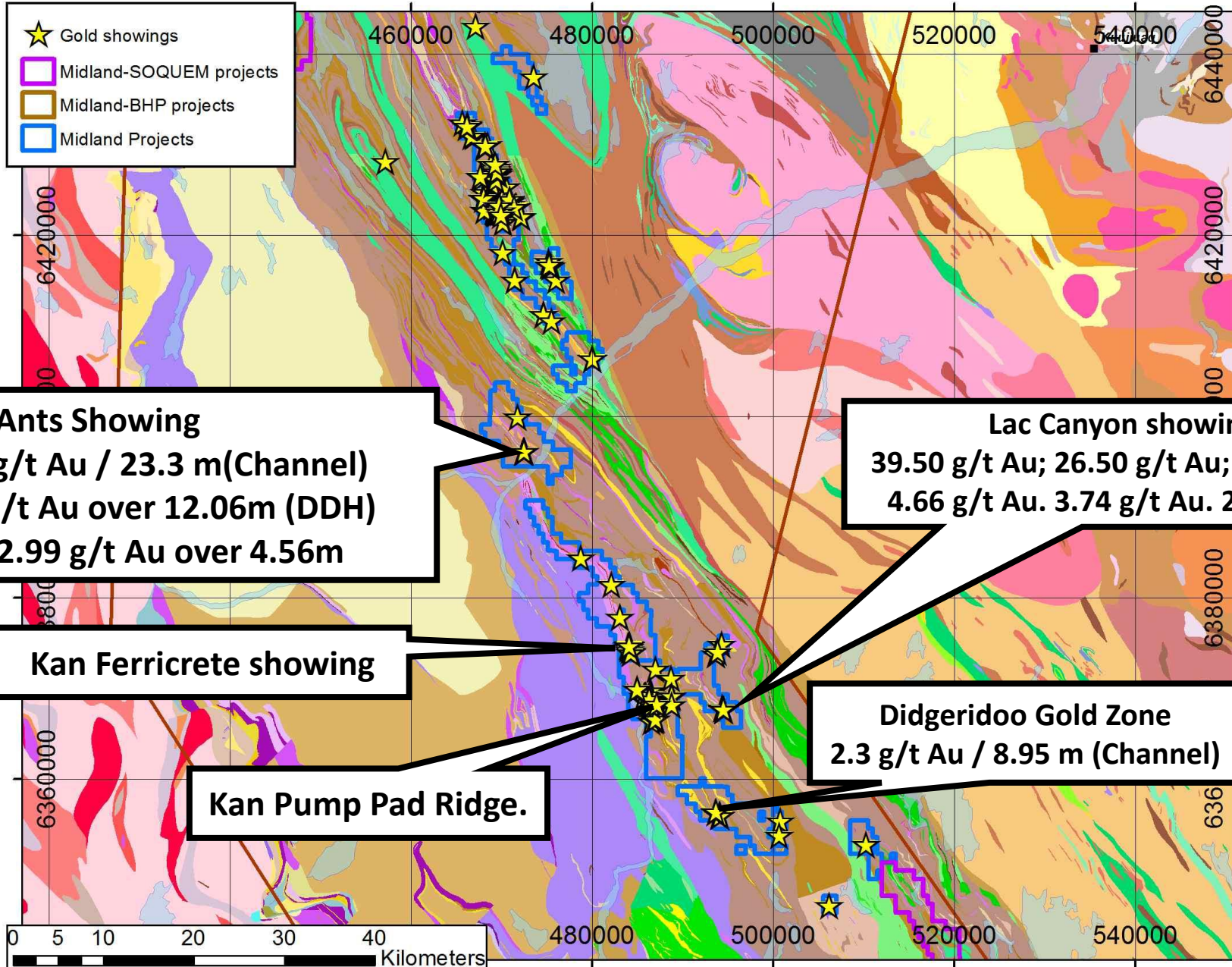


Willbob Project Regional Location



Willbob Gold Showings



References:
 For Cayon Lake: see press release of August 1st, 2024
 For Ants: : see press release of November 15, 2018 and October 23, 2019
 For Didgeridoo: : see press release of September 18, 2018

South-Central Block-Didgeridoo Gold Zone

- Lots of folding, with later faults that cut late D3' folds- Same as Shining fault
- **Robelin Fault –fault that** separates shelf sediments (west) from deep-water basin (shales, turbidites, gabbros) and 1st Cycle 2.1 Ga basalts –
- Probable major fault that controls gold mineralization at Kan
- **Didgeridoo showing: Shear zone with fault-filling quartz-calcite veins** in chloritized gabbro, with pyrrhotite (Low amounts of Po (<2.5% Po) mineralisation in veins and gabbro. At least 100m long, 5-10m large; open south.

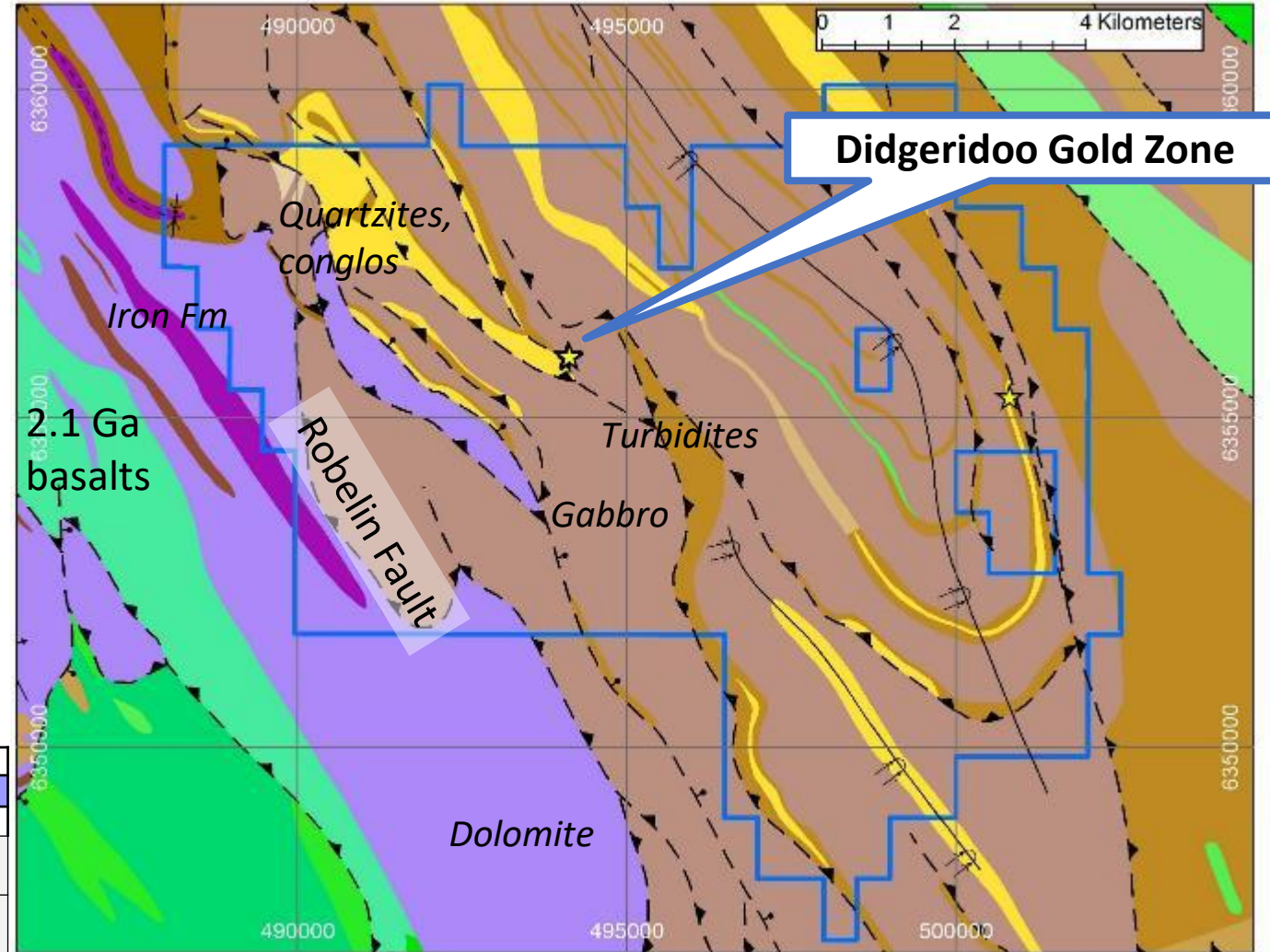


Table 3: Best Channels Results (Didgeridoo)

Sector	Type	Survey	From(m)	To(m)	Core length(m)	Au COMPIL (g/t)
Didgeridoo	Channel	DJ-17-01	0	9.8	9.8	1.5 over 9.8m
Didgeridoo	Channel	DJ-17-02	6,75	9.7	2.95	4.65 over 2.95m
		Including DJ-17-02	6,75	9.7	2.95	9.40 over 1.30m
Didgeridoo	Channel	DJ-18-05	1,8	10.95	8.95	2.30 over 8.95m
		Including DJ-18-05	2,65	5.8	3.15	3.56 over 3.15m